

**SONY**  
make.believe

2011.9

**Sony Overseas Models  
Products Catalog**

索尼海外规格产品目录  
オーバーシーズモデル総合カタログ

The latest Sony products you can enjoy around the world

您在全球范围内可享受到的最新索尼产品



**Sony  
Overseas  
Models**

索尼海外规格产品



DSC-TX100(JE)



HDR-CX700E(JE)



NWZ-W262(JE)

[sony.jp/overseas/](http://sony.jp/overseas/)

# Capture your memories with Sony 3D Products

采用索尼3D产品, 记录美好回忆



Digital Camcorder (HDR-TD10E(JE) P10), Mobile HD Snap Camera (MHS-FS3(JE) P17), Interchangeable Lens Digital Camera (SLT-A77VQ(JE) P22), Digital Still Camera (DSC-TX100(JE) P14)

## Record, Save, and View HD Images 拍摄、保存、观赏高清影像

Record 拍摄	HDR-TD10		MHS-FS3	
	2D HD <sup>*1</sup>	3D	2D	3D
Video images 动态影像	●	●	●	●
Still images 静态影像	●	—	●	●
* Visit product page for individual recording functions 关于各摄影功能, 请浏览各相关页面				
Save the contents you captured 保存所拍摄的影像	HDR-TD10		MHS-FS3	
	2D HD <sup>*1</sup>	3D	2D	3D
Transfer to PC with supplied software 使用随机软件传输到电脑	●	● <sup>*2</sup>	●	●
Save on DVD/BD via PC with supplied software 使用随机软件通过电脑以DVD/BD的形式保存	●	— <sup>*2</sup> — <sup>*3</sup>	—	—
Save on DVD by connecting with DVD writer 连接至DVD刻录机以DVD的形式保存	● <sup>*4</sup>	—	—	—
Save data by connecting with external HDD 连接至外置硬盘保存	●	●	—	—
Edit video images (cut/join) on PC with supplied software 使用随机软件对读入电脑的动态影像进行编辑(裁剪、合并)	●	● <sup>*2</sup> — <sup>*5</sup>	—	—

Review the contents you captured 观赏所拍摄的影像	HDR-TD10		MHS-FS3	
	2D <sup>*1</sup>	3D	2D	3D
View on PC with supplied software 使用随机软件通过电脑播放	●	— <sup>*2</sup> <sup>*6</sup>	●	— <sup>*6</sup>
View on TV by connecting directly with HDMI 通过电视HDMI接口直接连接进行播放	●	● <sup>*7</sup>	●	● <sup>*7</sup>
View on TV by connecting "Handycam" camcorder via external HDD 连接外置HDD和"Handycam"通过电视机播放	●	● <sup>*7</sup>	—	—
View on digital photo frame 通过数码相框播放	● <sup>*8</sup>	—	● <sup>*9</sup>	—
View on built-in LCD 通过主机液晶屏播放	●	●	●	●

### Safety Precautions for 3D viewing

●Some people may experience discomfort while watching 3D video images. ●Sony recommends that all viewers take regular breaks while watching 3D video images. The length and frequency of necessary breaks will vary from person to person. If you experience any discomfort, you should stop watching the 3D video images until the discomfort ends; consult a doctor when necessary. ●The vision of young children (especially those under six years old) is still under development. Consult your doctor (such as a paediatrician or eye doctor) before allowing young children to watch 3D video images. Adults should supervise young children to ensure they follow the recommendations listed above.

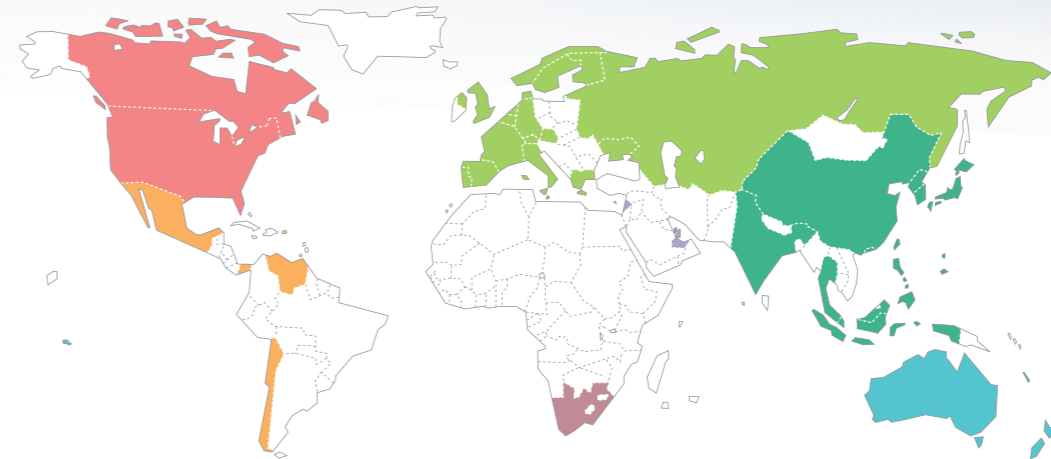
### 有关3D观赏的安全注意事项

●部分人士在观看3D视频影像时可能会感到不适。●索尼建议所有观赏者在观看3D视频影像时进行定期休息。需要休息的时长和频率因人而异。如果感到任何不适, 则应停止观看3D视频影像, 直至不适症状消失。必要时请咨询医生。●幼童(尤其是六岁以下的儿童)的视力仍然处于发育阶段。让幼童观看3D视频影像之前, 请咨询医生(儿科医生或眼科医生)。成人应当对幼童进行监督, 确保幼童听从上述建议事项。



索尼海外规格产品

## Warranty service covering 46 countries and regions 在46个国家和地区均可享受保修服务



<b>North America</b>	U.S.A. / Canada	<b>Asia *10</b>	Singapore / Malaysia / Hong Kong / Korea / Philippines / Maldives / Thailand / Taiwan / India / Indonesia / Japan / China*11	<b>Europe *12</b>	Belgium / Switzerland / Germany / Denmark / Spain / Portugal / Austria / Greece / France / Finland / Italy / Norway / Netherlands / Sweden / U.K. / Russia / Ukraine
<b>Latin America</b>	Puerto Rico / Chile / Panama / Venezuela / Mexico	<b>Middle East*10</b>	U.A.E. / Qatar / Bahrain / Lebanon	<b>Oceania *10</b>	Australia / New Zealand / Fiji / Tahiti / New Caledonia
<b>Africa *10</b>	South Africa				

Map illustration shown may differ from actual landscape. (This warranty service is as of July 2010)  
地图可能跟实际情形不同, 仅供参考。(此保修服务调查时间为2010年7月)

## Multi-lingual menus and instruction manuals 多国语言菜单和使用说明书

### Multi-lingual menus and instruction manuals are also available for Sony Overseas Models 索尼海外规格产品还会提供多国语言菜单和使用说明书

Sony Overseas Models product instructions come in various languages, such as English, Chinese, Korean, German, French, Spanish, Portuguese and Russian. (Available languages depend on the model) The menu display on the products of certain "Handycam," "Cyber-shot," etc. are able to display several languages besides English. (Available languages depend on the model)

索尼海外规格产品的使用说明书提供英语、中文、韩语、德语、法语、西班牙语、葡萄牙语和俄语等多种语言。(提供的语言取决于机型) 部分"Handycam"数码摄像机、"Cyber-shot"数码相机等产品的菜单显示能够显示英语等多种语言。(提供的语言取决于机型)

## After-sales service \*13 售后服务 \*13

### The Overseas Models are covered by a common warranty in a wide range of countries/regions 海外规格产品在许多国家/地区均可享受保修服务

© Common warranty service is offered in 46 countries/regions. 46个国家/地区享受保修服务。

In case you should experience problems with Japanese version products, you may face a number of difficulties when trying to resolve these outside of Japan. For example, there may be no spare parts available, or it may take long repair time or additional fees. However, with Sony Overseas Models, you automatically receive a common 1 year warranty, which is valid in 46 countries/regions around the world. This ensures you free 1 year coverage on your purchased products.

如果遇到日语版本产品方面的问题, 尝试在日本以外的地区解决可能会面临许多困难。例如, 可能没有备件, 维修时间过长或产生额外费用。但是对于索尼海外规格产品, 可自动获得在全球46个国家/地区有效的1年保修服务, 确保您所购买产品享受1年免费保修。

\*10 For Middle Eastern, African, Asian or Oceanian countries and regions not listed above, please Email us from the "Contact Us" section at: <http://www.css.ap.sony.com> 有关上述未列的中东、非洲、亚洲或大洋洲国家和地区, 请在下列网址的"联系我们"网页中发送电子邮件给我们: <http://www.css.ap.sony.com> \*11 China Limited Warranty sticker should be attached on the warranty card. 保修卡上须附有中国保修贴条。 \*12 For European countries not listed above, please contact: The European Sony Customer Care Center in Belgium. 有关上述未列的欧洲国家, 请联系: 位于比利时的欧洲索尼客服中心。 \*13 Warranty services for some products may not be provided, or differ in some countries and regions. For more details, please consult your nearest Sony Overseas Models dealers in Japan. 部分产品可能无法提供保修服务, 或者因国家和地区而异。如需了解详情, 请就近向日本的索尼海外规格产品经销商联系咨询。

## INDEX

目录

- P4 Digital Camcorder 数码摄像机
- P9 DVD Writer DVD刻录机
- P18 Digital Camcorder Accessories 数码摄像机配件
- P12 Digital Still Camera 数码相机
- P18 Digital Still Camera Accessories 数码相机配件
- P17 Mobile HD Snap Camera 便携式HD拍摄机
- P19 Digital Photo Frame 数码相框
- P19 Recording Media 索尼存储卡
- P20 Interchangeable Lens Digital Camera 数码单反相机 / 数码单电相机
- P24 Walkman® MP3播放器
- P26 Headphones 耳机
- P28 Speaker 扬声器
- P28 IC Recorder 数码录音棒
- P29 Compact Cassette Recorder 小型盒带录音机
- P29 CD Walkman® CD播放器
- P29 Radio 收音机
- P30 Specifications 规格表
- P40 Broadcasting System 广播系统

# HANDYCAM®

Digital Camcorder  
数码摄像机

## Give joy. Share with Handycam®.

用“Handycam”数码摄像机展现乐趣、分享欢乐。

Capture the moments, true to life, in HD (High Definition). With "Handycam," 1920 x 1080 recording - finely detailed HD video is in your hands.

高清捕捉真实瞬间。“Handycam”数码摄像机成就1920×1080录制——精致高清视频在握。

Full HD  
1080

1920-1080  
Recording



"Full HD 1080" refers to consumer electronics products designed, manufactured, and sold by the Sony Corporation that have the capability of recording, display and/or playback of HD (High Definition) images with more than 1080 vertical scanning lines.

"全高清1080"是指具有录制、显示和/或播放1080以上垂直扫描线高清影像功能的消费类电子产品。由索尼公司设计、制造和销售。

### Wide Angle Lens

广角镜头

26.3mm: HDR-CX700 / CX560 29.8mm: HDR-CX160 / PJ50 / PJ30 / PJ10 / TD10 (2D only)



#### Catch everything you want in the frame

在取景框中捕捉想要的任何景物

Wide gets wider. HD "Handycam" camcorders can now shoot at a focal length of 26.3mm or 29.8mm, making it possible to pack a large building or a big group of friends in the frame even in tight spaces.

广角更广。高清“Handycam”数码摄像机现能以26.3mm或29.8mm焦距进行拍摄，即使拍摄空间狭小，也能将大型建筑物或一大群朋友收入取景框中。



### "Exmor R" CMOS Sensor

"Exmor R" CMOS影像传感器

HDR-CX700 / CX560 / CX160 / PJ50 / PJ30 / PJ10 / TD10



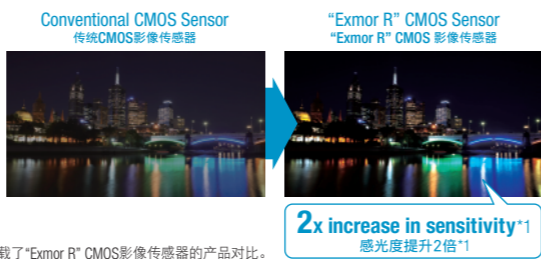
#### Capture stunning video even in low light

即使在低照度下亦能捕捉精彩视频

Newly developed technology enables the CMOS Sensor to utilize incident light more efficiently and actually doubles the sensitivity in comparison with conventional CMOS Sensors.

与传统的CMOS影像传感器相比，“Exmor R” CMOS影像传感器采用新研发的技术，更有效地利用了入射光，其实际感光度提高了一倍。

\*1 Comparison between our conventional model and the model with "Exmor R" CMOS Sensor. 索尼传统产品与搭载了“Exmor R” CMOS影像传感器的产品对比。



2x increase in sensitivity\*1  
感光度提升2倍\*1

### Optical SteadyShot (Active Mode)

光学防抖 (增强模式)

HDR-CX700 / CX560 / CX160 / PJ50 / PJ30 / PJ10 / TD10

#### Steady even while walking. Stable even when zooming

即便走动、变焦时均稳定

Optical SteadyShot (Active Mode) ensures smooth footage in various shooting situations, both on the move and even when zooming in on the action.

使用光学防抖 (增强模式) 功能，无论在何种拍摄条件下，包括在移动、甚至放大过程中，均能助您拍摄出流畅的动态影像。



### Progressive Mode 50p(PAL) / 60p(NTSC)

逐行扫描模式 50p(PAL)/60p(NTSC)

HDR-CX700 / CX560 / CX160 / PJ50 / PJ30 / PJ10 / TD10 (2D only)

#### Record crisp and smooth video with twice the image data

采用两倍影像数据拍摄鲜明平滑的视频

Full HD recording at 50p (PAL) / 60p (NTSC) is now available in all of our new HD "Handycam" camcorders for those who demand the best quality. In progressive recording mode, the amount of information recorded is double that of in interlace mode, giving you a crisp and sharp image with the same smoothness of 50 (PAL) / 60 (NTSC) frames per second.

针对要求最佳品质的用户，我们全新的“Handycam”数码摄像机现已全部提供50p(PAL)/60p(NTSC)的全高清拍摄。在逐行扫描拍摄模式下，拍摄的信息量为隔行模式的两倍，为您提供等同于每秒50(PAL)/60(NTSC)帧平滑度的鲜明清晰的影像。



### Progressive Mode 25p(PAL) / 24p(NTSC)

逐行扫描模式 25p(PAL)/24p(NTSC)

HDR-CX700 / CX560 / PJ50 / PJ30 / TD10 (2D only)

#### Capture Full HD movies with a true cinematic look

捕捉真实影院感的全高清动态影像

For those who wish to create the "motion picture" look, a 25p (PAL) / 24p (NTSC) native recording mode is now available. At 25 (PAL) / 24 (NTSC) frames per second, you can now easily create your very own Full HD home movie with a true cinematic look.

针对想要展现“动态影像”感的用户，现已提供25p(PAL)/24p(NTSC)原生拍摄模式。能够以每秒25(PAL)/24(NTSC)帧，轻松制作具有真实影院感的个人原创全高清家庭动态影像。

### Built-in Projector

内置投影机

HDR-PJ50 / PJ30 / PJ10

#### Project your videos on the go anywhere, anytime

随时随地投射您的视频

Packed with a built-in projector and a pair of high quality stereo speakers, our projector model allows you to easily and instantly share your latest adventure with your friends and family without the need of a TV and even cumbersome cables. When used in a dark environment, you can even project videos up to 60-inch diagonally.

机内已配有内置投影机 and 一对高品质立体声扬声器。无需电视机和繁琐的线缆，即可让您轻松及时地与朋友和家人分享您最新的经历。在较暗的环境中使用时，您甚至可以投射出最大对角线60英寸的视频。

Projector Specifications 投影机规格	[HDR-PJ50 / PJ30 / PJ10]
Light Output 光输出	Up to 10 lumen
Resolution Output 分辨率输出	640 x 360
Screen Coverage 屏幕范围	10 type - 60 type
Throw Distance 投射距离	Approx. 0.5m - 3m
Endurance (Battery Life) 连续使用时间 (电池寿命)	Approx. 1.5 hours (Supplied Battery)



Full HD 1080  
AVCHD Progressive

## Flagship Full HD "Handycam" along with outstanding image quality, sound quality, and beautifully crafted texture

旗舰级全高清“Handycam”数码摄像机，出色的画质、音质和美丽精致的纹理

- Catch everything you want in the frame with 26.3mm wide angle Sony "G Lens"
- A newly developed "wide" Exmor R™ CMOS Sensor for better image quality with great details
- Record steady videos in all situations with the Optical SteadyShot (Active Mode)
- 凭借26.3mm广角索尼"G镜头"在取景框中捕捉想要的任何景物
- 最新开发的"广角"Exmor R™ CMOS影像传感器实现更好的画质及更多的细节
- 凭借光学防抖(增强模式)在各种场合下拍摄稳定的视频



Still Image Size  
**12.3** Megapixels  
1230万像素静态图像尺寸



Lens Hood 镜头遮光罩 (Supplied 配备)  
View Finder 取景器

MADE IN JAPAN  
日本制造(主机)

PAL **HDR-CX700E(JE)**  
Open Price



3.0 type [Touch Panel]  
921K dots Xtra Fine LCD

Battery continuous recording duration (Approx.) 电池连续工作时间(约)			Movie recording [High-Definition] (Approx.) 动态影像录制时间 [高清] (约)	
LCD ON Viewfinder OFF 开启液晶显示屏 关闭取景器	NP-FV100	NP-FV70	NP-FV50 [Supplied] 配备	96GB Internal Memory 96GB内存
HDR-CX700E ※AVCHD 9M (HD-HQ)	8h. 35min.	4h. 20min.	2h. 05min.	AVCHD 28M (PS) 7h. 55min. AVCHD 24M (FX) 9h. 20min. AVCHD 17M (FH) 12h. 45min. AVCHD 9M (HQ) 22h. 25min. AVCHD 5M (LP) 38h. 40min.

Still Image Size 12.3 Megapixels 1230万像素静态图像尺寸	"Exmor R" CMOS Sensor "Exmor R" CMOS影像传感器	10x Optical Zoom 10倍光学变焦	26.3mm Wide-angle 26.3mm广角焦距	Optical SteadyShot (Active Mode) 光学防抖(增强模式)	5.1ch / 2ch MIC 5.1 / 2声道麦克风	Stereo Speaker S-MASTER 立体声扬声器 S-MASTER	Progressive Mode (PAL: 50p/25p) 逐行扫描模式	iAUTO 智能自动
--	--	-----------------------------	---------------------------------	--	---------------------------------	--	---	---------------

Multilingual Menu Display  
多语言菜单显示  
English / Chinese (Simplified Chinese / Traditional Chinese) 中文 (简体中文 / 繁体中文) / French / Italian / German / Spanish / Dutch / Russian / Portuguese / Greek / Arabic / Persian / Thai / Turkish / Polish / Czech / Hungarian / Romanian / Indonesian / Malay

Instruction Manual  
使用说明书  
English / Russian / Chinese (Simplified Chinese)  
中文 (简体中文)

Full HD 1080  
AVCHD Progressive

## Advanced "Handycam" with 26.3mm Wide Angle Sony "G Lens" and 12.3 Megapixels still picture

高级“Handycam”数码摄像机，配备26.3mm广角索尼“G镜头”和1230万像素静态图像尺寸功能

Still Image Size  
**12.3** Megapixels  
1230万像素静态图像尺寸



MADE IN JAPAN  
日本制造(主机)

NTSC **HDR-CX560(JE)**  
Open Price

PAL **HDR-CX560E(JE)**  
Open Price



3.0 type [Touch Panel]  
921K dots Xtra Fine LCD

Internal Memory <b>64</b> GB 内存	Recording Time Up to Approx. 26h. 40min. AVCHD 5M (LP) mode (2 channels sound) 最长记录时间 约 26小时40分钟 在AVCHD 5M(LP)模式下(2声道)
---------------------------------------	---

Still Image Size 12.3 Megapixels 1230万像素静态图像尺寸	"Exmor R" CMOS Sensor "Exmor R" CMOS影像传感器	10x Optical Zoom 10倍光学变焦
26.3mm Wide-angle 26.3mm广角焦距	Optical SteadyShot (Active Mode) 光学防抖(增强模式)	5.1ch / 2ch MIC 5.1 / 2声道麦克风
Stereo Speaker S-MASTER 立体声扬声器 S-MASTER	Progressive Mode (PAL: 50p/25p, NTSC: 60p/24p) 逐行扫描模式	iAUTO 智能自动

Exmor R™ CMOS Sensor  
S-MASTER Digital Amplifier  
1920×1080 recording

Battery continuous recording duration (Approx.) 电池连续工作时间(约)			Movie recording [High-Definition] (Approx.) 动态影像录制时间 [高清] (约)	
LCD ON 开启液晶显示屏	NP-FV100	NP-FV70	NP-FV50 [Supplied] 配备	64GB Internal Memory 64GB内存
HDR-CX560 ※AVCHD 9M (HD-HQ)	8h. 05min.	4h. 00min.	1h. 55min.	AVCHD 28M (PS) 5h. 15min. AVCHD 24M (FX) 6h. 15min. AVCHD 17M (FH) 8h. 25min. AVCHD 9M (HQ) 14h. 55min. AVCHD 5M (LP) 25h. 45min.
HDR-CX560E ※AVCHD 9M (HD-HQ)	8h. 35min.	4h. 20min.	2h. 05min.	

Full HD 1080  
AVCHD Progressive

## Entry level HD "Handycam" with a 29.8mm Wide Angle "G Lens," Optical SteadyShot (Active Mode)

入门级高清“Handycam”数码摄像机，配备29.8mm广角“G镜头”、光学防抖(增强模式)



MADE IN JAPAN  
日本制造(主机)

NTSC **HDR-CX160(JE)**  
Open Price

PAL **HDR-CX160E(JE)**  
Open Price



3.0 type [Touch Panel]  
230K dots LCD

Internal Memory <b>16</b> GB 内存	Recording Time Up to Approx. 6h. 25min. AVCHD 5M (LP) mode (2 channels sound) 最长记录时间 约 6小时25分钟 在AVCHD 5M(LP)模式下(2声道)
---------------------------------------	---

Still Image Size 3.3 Megapixels 330万像素静态图像尺寸	"Exmor R" CMOS Sensor "Exmor R" CMOS影像传感器	30x Optical Zoom 30倍光学变焦
29.8mm Wide-angle 29.8mm广角焦距	Optical SteadyShot (Active Mode) 光学防抖(增强模式)	2ch MIC 2声道麦克风
Monaural Speaker 单声道扬声器	Progressive Mode (PAL: 50p, NTSC: 60p) 逐行扫描模式	iAUTO 智能自动

Exmor R™ CMOS Sensor  
1920×1080 recording

Battery continuous recording duration (Approx.) 电池连续工作时间(约)			Movie recording [High-Definition] (Approx.) 动态影像录制时间 [高清] (约)	
LCD ON 开启液晶显示屏	NP-FV100	NP-FV70	NP-FV50 [Supplied] 配备	16GB Internal Memory 16GB内存
HDR-CX160 ※AVCHD 9M (HD-HQ)	10h. 25min.	5h. 15min.	2h. 30min.	AVCHD 28M (PS) 1h. 15min. AVCHD 24M (FX) 1h. 30min. AVCHD 17M (FH) 2h. 5min. AVCHD 9M (HQ) 3h. 40min. AVCHD 5M (LP) 6h. 25min.
HDR-CX160E ※AVCHD 9M (HD-HQ)	10h. 25min.	5h. 15min.	2h. 30min.	

Multilingual Menu Display  
多语言菜单显示

NTSC: English / Chinese (Traditional Chinese) 中文 (繁体中文) / Portuguese / French / Spanish / Korean  
PAL: English / Chinese (Simplified Chinese / Traditional Chinese) 中文 (简体中文 / 繁体中文) / French / Italian / German / Spanish / Dutch / Russian / Portuguese / Greek / Arabic / Persian / Thai / Turkish / Polish / Czech / Hungarian / Romanian / Indonesian / Malay

Instruction Manual  
使用说明书

NTSC: English / Portuguese / Spanish / Korean  
PAL: English / Russian / Chinese (Simplified Chinese)  
中文 (简体中文)

※Please refer to page 30 for product specifications and page 18 for accessories. 关于本产品的规格，请参阅第30页；配件请参阅第18页。  
★For information about the prices of "Open Price" products, please contact your nearest Sony product retailer. ★All insets contained here in are simulated pictures only.  
★如需了解关于“Open Price(价格未定)”产品的价格信息，请就近向索尼产品零售商联系咨询。★此处包含的所有插图均为模拟图片，仅供参考。

**Full HD 1080** AVCHD Progressive

**220GB HDD AVCHD camcorder with a built-in projector (7.1M still picture)**  
内置投影机的220GB硬盘AVCHD数码摄像机 (710万像素静态图像尺寸)



**Built-in PROJECTOR**

**MADE IN JAPAN** 日本制造 (主机)

**3.0 type [Touch Panel]**

**230K dots LCD**

**HDR-PJ50E(JE)**  
Open Price **NEW**

**Internal Memory**  
**220GB** 内存

Recording Time Up to Approx. **91h. 50min.**  
最长记录时间 约 91小时 50分钟

Still Image Size <b>7.1</b> Megapixels 710万像素静态图像尺寸	"Exmor R" CMOS Sensor "Exmor R" CMOS影像传感器	<b>12x</b> Optical Zoom 12倍光学变焦
<b>29.8mm</b> Wide-angle 29.8mm广角焦距	Optical SteadyShot (Active Mode) 光学防抖(增强模式)	<b>5.1ch / 2ch</b> MIC 5.1 / 2声道麦克风
<b>Stereo Speaker S-MASTER</b> 立体声扬声器 S-MASTER	Progressive Mode (PAL: 50p/25p) 逐行扫描模式	<b>iAUTO</b> 智能自动

**Exmor R CMOS Sensor** **G**

**S-MASTER Digital Amplifier** **1920x1080 recording**

**Battery continuous recording duration (Approx.)**  
电池连续工作时间 (约)

LCD ON 开启液晶显示屏	NP-FV100	NP-FV70	<b>NP-FV50</b> [Supplied 配备]
<b>HDR-PJ50E</b> ※AVCHD 9M (HD-HQ)	6h. 55min.	3h. 30min.	<b>1h. 40min.</b>

**Movie recording [High-Definition] (Approx.)**  
动态影像录制时间 [高清] (约)

Video compression (5.1 channels sound) 视频压缩 (5.1声道)	<b>220GB HDD</b> 220GB硬盘
AVCHD 28M (PS)	18h. 10min.
AVCHD 24M (FX)	21h. 30min.
AVCHD 17M (FH)	29h. 30min.
AVCHD 9M (HQ)	51h. 20min.
AVCHD 5M (LP)	88h. 40min.

**Built-in PROJECTOR**

**Full HD 1080** AVCHD Progressive

**The world's first<sup>2</sup> AVCHD camcorder with a built-in projector (16GB Internal Memory, 3.3M still picture)**  
全球首款内置投影机的AVCHD数码摄像机 (16GB内存, 330万像素静态图像尺寸)



**Built-in PROJECTOR**

**MADE IN JAPAN** 日本制造 (主机)

**3.0 type [Touch Panel]**

**230K dots LCD**

**HDR-PJ10E(JE)**  
Open Price

**Internal Memory**  
**16GB** 内存

Recording Time Up to Approx. **6h. 25min.**  
最长记录时间 约 6小时 25分钟

Still Image Size <b>3.3</b> Megapixels 330万像素静态图像尺寸	"Exmor R" CMOS Sensor "Exmor R" CMOS影像传感器	<b>30x</b> Optical Zoom 30倍光学变焦
<b>29.8mm</b> Wide-angle 29.8mm广角焦距	Optical SteadyShot (Active Mode) 光学防抖(增强模式)	<b>5.1ch / 2ch</b> MIC 5.1 / 2声道麦克风
<b>Stereo Speaker S-MASTER</b> 立体声扬声器 S-MASTER	Progressive Mode (PAL: 50p) 逐行扫描模式	<b>iAUTO</b> 智能自动

**Exmor R CMOS Sensor** **G**

**S-MASTER Digital Amplifier** **1920x1080 recording**

**Battery continuous recording duration (Approx.)**  
电池连续工作时间 (约)

LCD ON 开启液晶显示屏	NP-FV100	NP-FV70	<b>NP-FV50</b> [Supplied 配备]
<b>HDR-PJ10E</b> ※AVCHD 9M (HD-HQ)	10h.	5h.	<b>2h. 25min.</b>

**Movie recording [High-Definition] (Approx.)**  
动态影像录制时间 [高清] (约)

Video compression (5.1 channels sound) 视频压缩 (5.1声道)	<b>16GB Internal Memory</b> 16GB内存
AVCHD 28M (PS)	1h. 15min.
AVCHD 24M (FX)	1h. 30min.
AVCHD 17M (FH)	2h.
AVCHD 9M (HQ)	3h. 35min.
AVCHD 5M (LP)	6h. 15min.

**Built-in PROJECTOR**

**Full HD 1080** AVCHD Progressive

**The world's first<sup>2</sup> AVCHD camcorder with a built-in projector (32GB Internal Memory, 7.1M still picture)**  
全球首款内置投影机的AVCHD数码摄像机 (32GB内存, 710万像素静态图像尺寸)



**Built-in PROJECTOR**

**MADE IN JAPAN** 日本制造 (主机)

**3.0 type [Touch Panel]**

**230K dots LCD**

**HDR-PJ30E(JE)**  
Open Price

**Internal Memory**  
**32GB** 内存

Recording Time Up to Approx. **13h. 15min.**  
最长记录时间 约 13小时 15分钟

Still Image Size <b>7.1</b> Megapixels 710万像素静态图像尺寸	"Exmor R" CMOS Sensor "Exmor R" CMOS影像传感器	<b>12x</b> Optical Zoom 12倍光学变焦
<b>29.8mm</b> Wide-angle 29.8mm广角焦距	Optical SteadyShot (Active Mode) 光学防抖(增强模式)	<b>5.1ch / 2ch</b> MIC 5.1 / 2声道麦克风
<b>Stereo Speaker S-MASTER</b> 立体声扬声器 S-MASTER	Progressive Mode (PAL: 50p/25p) 逐行扫描模式	<b>iAUTO</b> 智能自动

**Exmor R CMOS Sensor** **G**

**S-MASTER Digital Amplifier** **1920x1080 recording**

**Battery continuous recording duration (Approx.)**  
电池连续工作时间 (约)

LCD ON 开启液晶显示屏	NP-FV100	NP-FV70	<b>NP-FV50</b> [Supplied 配备]
<b>HDR-PJ30E</b> ※AVCHD 9M (HD-HQ)	8h. 35min.	4h. 20min.	<b>2h. 5min.</b>

**Movie recording [High-Definition] (Approx.)**  
动态影像录制时间 [高清] (约)

Video compression (5.1 channels sound) 视频压缩 (5.1声道)	<b>32GB Internal Memory</b> 32GB内存
AVCHD 28M (PS)	2h. 35min.
AVCHD 24M (FX)	3h. 5min.
AVCHD 17M (FH)	4h. 10min.
AVCHD 9M (HQ)	7h. 25min.
AVCHD 5M (LP)	12h. 50min.

**Built-in PROJECTOR**

**Multilingual Menu Display** 多语言菜单显示

English / Chinese (Simplified Chinese / Traditional Chinese) 中文 (简体中文 / 繁体中文) / French / Italian / German / Spanish / Dutch / Russian / Portuguese / Greek / Arabic / Persian / Thai / Turkish / Polish / Czech / Hungarian / Romanian / Indonesian / Malay

**Instruction Manual** 使用说明书

English / Russian / Chinese (Simplified Chinese) 中文 (简体中文)

※Please refer to page 31 for product specifications and page 18 for accessories. 关于本产品的规格, 请参阅第31页; 配件请参阅第18页。

**Multilingual Menu Display** 多语言菜单显示

English / Chinese (Simplified Chinese / Traditional Chinese) 中文 (简体中文 / 繁体中文) / French / Italian / German / Spanish / Dutch / Russian / Portuguese / Greek / Arabic / Persian / Thai / Turkish / Polish / Czech / Hungarian / Romanian / Indonesian / Malay

**Instruction Manual** 使用说明书

English / Russian / Chinese (Simplified Chinese) 中文 (简体中文)

※Please refer to page 31 for product specifications and page 18 for accessories. 关于本产品的规格, 请参阅第31页; 配件请参阅第18页。

**DVD Writer | DVD刻录机**

**ovp direct**

**VRD-MC6(JE)**  
Open Price

**2.7 type color LCD screen**

- Transfer your movies and digital pictures to DVD without a PC
- Connects with virtually any camcorder, also compatible with various memory cards
- 无须借助电脑, 即可将您的影片和数字图像转录至DVD光盘
- 可与几乎任何摄像机连接, 并兼容多种记忆卡

**VRD-P1(JE)**  
Open Price

- Transfer your movies to DVD without a PC
- Not only on DVD player, but you can leave VRD-P1 connected to "Handycam," and watch the show on a connected TV set
- 无需借助电脑, 即可将您的影片转录至DVD光盘
- 不仅可以通过DVD播放器观看影像, 只要保持VRD-P1和"Handycam"数码摄像机的连接, 您还可以在连接的电视上观看影像

**1 Connect 连接** **2 Press 按下** **3 Burn 刻录**

**Compatible Memory Cards**

"Memory Stick" / "Memory Stick PRO" / "Memory Stick Duo" / "Memory Stick PRO Duo" / "Memory Stick PRO-HG Duo" / SD Memory Card / SDHC Memory Card / xD-Picture Card

**4 Enjoy 尽享精彩**  
**Play on TV via "Handycam"** 通过"Handycam"摄像机在电视上播放

**Multilingual Menu Display** 多语言菜单显示

VRD-MC6: English / Chinese (Simplified Chinese / Traditional Chinese) 中文 (简体中文 / 繁体中文) / French / Spanish / Italian / German / Dutch / Russian / Persian / Arabic / Japanese

**Instruction Manual** 使用说明书

**Paper** : [VRD-MC6] English [VRD-P1] English / French / German / Dutch / Spanish / Portuguese / Italian / Russian  
**CD-ROM**: English / Chinese (Simplified Chinese / Traditional Chinese) 中文 (简体中文 / 繁体中文) / French / Spanish / Italian / German / Dutch / Russian / Persian / Arabic / Japanese

※Please refer to page 35 for product specifications. 关于本产品的规格, 请参阅第35页。

1920 x 1080 Full HD 3D AVCHD 3D/Progressive

## Shoot 3D in "Double Full HD"

"两倍全高清" 3D拍摄



### Shot with two lenses and processed with two image processors

双镜头拍摄, 双影像处理器处理

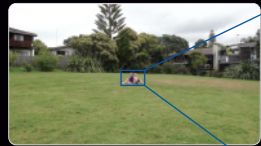
Driven by not one but two Wide Angle Sony "G Lenses," two "Exmor R" CMOS Sensors, and two powerful "BIONZ" image processors, HDR-TD10 is able to shoot 3D images in "Double Full HD." You can enjoy 3D images in Full HD quality just as you can with conventional 2D "Handycam" HD camcorders.

采用双重系统驱动! HDR-TD10凭借两个广角索尼"G镜头", 两个"Exmor R" CMOS影像传感器, 以及两个功能强大的"BIONZ"影像处理器, 实现"两倍全高清"3D影像的拍摄。如同欣赏传统2D "Handycam" 高清数码相机拍摄的影像一样, 可以尽情欣赏全高清品质的3D影像。



### 10x optical zoom in 3D

3D 10倍光学变焦



10x optical zoom  
10倍光学变焦



### Shoot in 3D, watch in both 3D and 2D

3D拍摄, 3D和2D皆可观赏



### Dynamic 3D images without dedicated glasses

无需专用眼镜即可观赏动态3D影像



Full HD 1080 AVCHD Progressive

## Reinvent your creativity, discover your passion.

唤醒您的创意 挥洒您的激情



### Image Sensor 影像传感器

With an image sensor that is approximately 19.5 times larger than those used in conventional camcorders, you can capture dramatic defocusing effects and use the shallow depth of field to focus the audience's attention on different subjects at will.

新影像传感器约为旧影像传感器的19.5倍大, 可捕捉富有表现力的散焦效果, 并可自由地采用浅景深使观众关注不同拍摄主体。



"Exmor" APS HD CMOS Sensor  
"Exmor" APS HD CMOS 影像传感器

1/2.88-type compact camcorder image sensor  
1/2.88"型小型摄像机影像传感器



### Interchangeable Lenses 可更换镜头

A whole new level of creative expression is now possible with NEX-VG20EH(JE). You can take full advantage of both the E-mount and A-mount\*3 lenses to capture anything and everything between macro and super telephoto.

\*3 An optional mount adaptor(LA-EA2, LA-EA1) is required.

使用NEX-VG20EH(JE), 能够实现全新水平的创意表现。您可以充分利用E卡口和A卡口\*3镜头在微距和超级远距之间捕捉任何景物及所景物。 \*3 需要使用选购的卡口适配器(LA-EA2, LA-EA1)。



E-mount lens with Optical SteadyShot  
E卡口镜头, 具备光学防抖功能



E-mount lenses E卡口镜头

### Microphone 麦克风

NEX-VG20EH(JE) features a unique Quad Capsule Spatial Array Microphone high directivity and clear, low-noise stereo / 5.1ch surround sound recording.

NEX-VG20EH(JE)采用独特的四胶囊空间阵列麦克风, 确保高定向性且清晰的低噪立体声 / 5.1声道环绕声录制。



Microphone capsule structure 麦克风胶囊结构

MADE IN JAPAN  
日本制造(主机)

### PAL HDR-TD10E(JE)

Open Price **NEW**



3.5 type [Touch Panel]  
1,229k dots  
Xtra Fine 3D LCD

### Battery continuous recording duration (Approx.)

电池连续工作时间(约)

LCD ON 开启液晶显示屏	NP-FV100	NP-FV70 [Supplied] [配备]
HDR-TD10E ※AVCHD 9M (HD-HQ)	3D: 5h. 20min. 2D: 7h. 50min.	3D: 2h. 40min. 2D: 3h. 55min.

### Movie recording [High-Definition] (Approx.)

动态影像录制时间 [高清] (约)

Video compression (5.1 channels sound) 视频压缩 (5.1声道)	64GB Internal Memory 64GB内存
AVCHD 28M (3D)	5h. 15min.
AVCHD 28M (PS)	5h. 15min.
AVCHD 24M (FX)	6h. 15min.
AVCHD 17M (FH)	8h. 25min.
AVCHD 9M (HQ)	14h. 55min.
AVCHD 5M (LP)	25h. 45min.

Internal Memory  
**64GB**  
内存

Recording Time Up to Approx.  
AVCHD 5M (LP) mode (2 channels sound)  
**26h. 40min.\*2**  
最长记录时间 约  
26小时40分钟\*2  
在AVCHD 5M(LP)模式下(2声道)

Still Image Size <b>7.1</b> Megapixels 710万像素静态图像尺寸	2x "Exmor R" CMOS Sensor 2x "Exmor R" CMOS影像传感器	10x(3D) / 12x(2D) Optical Zoom 10倍(3D) / 12倍(2D) 光学变焦	34.4mm(3D) / 29.8mm(2D) Wide-angle 34.4mm(3D) / 29.8mm(2D) 广角焦距	Optical SteadyShot (Active Mode) 光学防抖(增强模式)	5.1ch / 2ch MIC 5.1 / 2声道麦克风	Stereo Speaker S-MASTER 立体声扬声器 S-MASTER	Progressive Mode(2D) (PAL: 50p/25p) 逐行扫描模式(2D)	iAUTO 智能自动
---	--	---	---	--	---------------------------------	--	--	---------------

Multilingual Menu Display  
多语言菜单显示  
English / Chinese (Simplified Chinese / Traditional Chinese) 中文 (简体中文 / 繁体中文) / French / Italian / German / Spanish / Dutch / Russian / Portuguese / Greek / Arabic / Persian / Thai / Turkish / Polish / Czech / Hungarian / Romanian / Indonesian / Malay

Instruction Manual  
使用说明书  
English / Russian / Chinese (Simplified Chinese) 中文 (简体中文)

MADE IN JAPAN  
日本制造(主机)

### PAL NEX-VG20EH(JE)

Open Price **Coming Soon**

3.0 type  
921k dots  
Xtra Fine LCD



Kit lens: E 18-200mm F3.5-6.3 OSS

### Battery continuous recording duration (Approx.)

电池连续工作时间(约)

LCD ON Viewfinder OFF 开启液晶显示屏 关闭取景器	NP-FV100	NP-FV70 [Supplied] [配备]
NEX-VG20EH ※AVCHD 9M (HD-HQ)	5h. 50min.	2h. 55min.

### Movie recording [High-Definition] (Approx.)

动态影像录制时间 [高清] (约)

Video compression (2 channels sound) 视频压缩 (2声道)	32GB "Memory Stick" / SD Memory Card <sup>4</sup>
AVCHD 28M (PS)	2h. 30min.
AVCHD 24M (FX)	3h. 00min.
AVCHD 17M (FH)	4h. 05min.
AVCHD 9M (HQ)	7h. 10min.
AVCHD 5M (LP)	12h. 25min.

Still Image Size <b>16.1</b> Megapixels 1610万像素静态图像尺寸	"Exmor" APS HD CMOS Sensor "Exmor" APS HD CMOS影像传感器	11x <sup>*5</sup> Optical Zoom 11倍光学变焦	Optical SteadyShot <sup>*5</sup> 光学防抖	5.1ch / 2ch MIC 5.1 / 2声道麦克风	Progressive Mode (PAL: 50p/25p) 逐行扫描模式
---	--	--	--	---------------------------------	--

\*5 Kit Lens E 18-200mm F3.5-6.3 OSS

Multilingual Menu Display  
多语言菜单显示  
English / Chinese (Simplified Chinese / Traditional Chinese) 中文 (简体中文 / 繁体中文) / French / Italian / German / Spanish / Dutch / Russian / Portuguese / Greek / Thai / Polish / Czech / Hungarian / Romanian

Instruction Manual  
使用说明书  
English / Russian / Chinese (Simplified Chinese) 中文 (简体中文)

\* CMOS Sensor photo is an image. CMOS影像传感器是图像。 \*Please refer to page 31-32 for product specifications and page 18 for accessories. 关于本产品的规格, 请参阅第31-32页; 配件请参阅第18页。

\*For information about the prices of "Open Price" products, please contact your nearest Sony product retailer. \*All insets contained here in are simulated pictures only.

\*如需了解关于"Open Price(价格未定)"产品的价格信息, 请就近向索尼产品零售商联系咨询。\*此处包含的所有插图均为模拟图片, 仅供参考。

# Cyber-shot

Digital Still Camera  
数码相机

## Imaging Technology — Excellence on the inside

成像技术 — 内部卓越

Sony is one of the few manufacturers that develops all key components used in digital still cameras, such as lenses, image sensors and imaging processors.

索尼是少数自行开发镜头、影像传感器和影像处理器等用于数码相机内部所有关键组件的厂商之一。



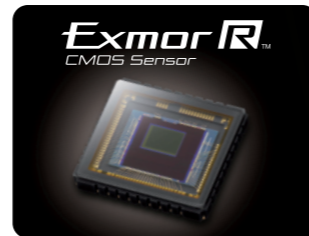
### Main advantage of "Exmor R" CMOS Sensor

"Exmor R" CMOS影像传感器的主要优点

DSC-TX100 / TX55 / TX10 / HX100 / HX9 / WX7

For low light moments, the back-illuminated "Exmor R" CMOS Sensor captures the mood and reduces the noise. The high-speed throughput of CMOS Sensors contribute to higher quality images even in low light and new shooting functions.

对于低光照条件，背照式"Exmor R" CMOS影像传感器可捕捉气氛、减少噪音。CMOS影像传感器的高速处理能力，即使在低光照条件下也能助您实现出众的图像质量，尽享全新拍摄功能乐趣。



### HD Movies in AVCHD Format

AVCHD格式高清动态影像

DSC-TX100 / TX55 / TX10 / HX100 / HX9 / WX7

#### Smoother, more natural HD movies with AVCHD video

更加平滑、自然的AVCHD视频格式高清动态影像

"Cyber-shot" can now shoot Full HD movies in AVCHD (1920 x 1080, 50i / 50p\*) format, adding a new dimension to the camera's existing video capability.

"Cyber-shot"数码相机现已能够拍摄AVCHD (1920 x 1080, 50i / 50p\*) 格式的全高清动态影像，画质更细腻，细节更丰富。  
\*1 For DSC-TX100 / HX100 / HX9



※ OSD image shown above is DSC-TX100.  
上面所示为DSC-TX100的OSD影像。



### Enhanced Dual REC creates photos at up to 12M level while recording movies

增强型双重录制功能，从动态影像中抽出的照片有效像素可高达12万

DSC-TX55

Dual REC allows capturing still images while shooting movies, and now includes By Pixel Super Resolution technology that delivers photos up to 12M level in size. Simply press the shutter button while recording movies to save your precious memory as a photo.

双重录制功能可在拍摄动态影像的同时捕捉静态图像，追加By Pixel Super Resolution技术后，可直接记录12万有效像素的照片。只需在拍摄动态影像时按下快门按钮，便可将您珍贵的记忆保存为照片。



### Sweep Panorama

扫描全景模式

DSC-TX100 / TX55 / TX10 / T110D / T110 / J10 / HX100 / HX9 / H70 / WX7 / W570 / W530



Just press the shutter and sweep the camera: automatically combines a burst of images to create extra-wide panoramic pictures.

只需按下快门并平移相机便可自动组合连拍影像，生成超宽全景照片。



### Easy 3D Shooting

轻松3D拍摄



A wide range of subjects can now be shot in 3D, including close-ups of flowers, food shots, portraits and other objects. Creating 3D photos of everyday objects is now easy.

包括花朵特写、美食摄影、人像及其他景物在内的各种各样拍摄主体，现均可采用3D模式进行拍摄。每日轻松创作景物的3D照片。

#### 3D Still Image 3D静态图像

DSC-TX100 / TX55 / TX10 / HX100 / HX9 / WX7

Simply press the shutter button once and the camera instantaneously records two images, adjusting focus as needed for each image. After analysing distances between subject and foreground and subject and background, it converts the two images into 3D, taking into account the difference in perception between right and left eyes to produce the final 3D photo.

只需按下一次快门按钮，相机便会瞬间记录两张图像，并根据需要为每张图像调节对焦。相机在分析拍摄主体与前景及拍摄主体与背景之间的距离后，将两张图像转换为3D图像，充分考虑左眼和右眼之间的视觉感知差，生成最终的3D照片。



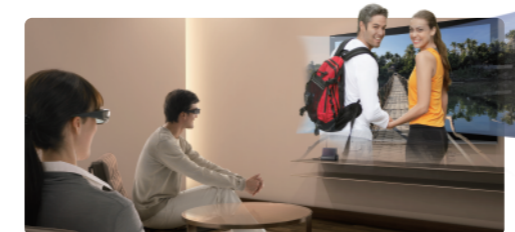
#### 3D Sweep Panorama 3D扫描全景

DSC-TX100 / TX55 / TX10 / HX100 / HX9 / WX7



Sweep & take a panorama photo, then just connect your "Cyber-shot" to a 3D-compatible HDTV such as "BRAVIA," and slip on the 3D eyewear to enjoy 3D panoramic image.

平移并拍摄全景照片，然后只需将"Cyber-shot"数码相机连接至"BRAVIA"等3D兼容高清电视，戴上3D眼镜便可欣赏3D全景影像。

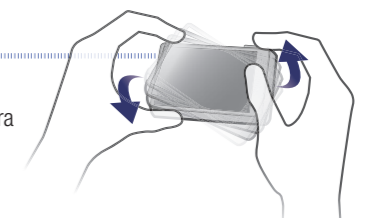


#### Sweep Multi Angle 多角度扫描

DSC-TX100 / TX55 / TX10 / HX100 / HX9 / WX7

Sweep Multi Angle shows a simulated 3D-like image on the "Cyber-shot" LCD screen. Just tilt the camera from side to side when viewing the image.

多角度扫描可在"Cyber-shot"数码相机液晶屏上显示模拟3D的影像。观赏影像时只需来回摆动相机。



※ CMOS Sensor photo is an image. CMOS影像传感器照片是示意图。  
★All insets contained here in are simulated pictures only. ★此处包含的所有插图均为模拟图片，仅供参考。



Full HD movie & 3D in one 12.2 mm slim body with 3.3" Wide & Touch OLED panel

12.2 mm纤薄机身, 集全高清动态影像和3D影像拍摄于一体, 3.3"宽屏触摸OLED (有机发光显示屏) 面板



照片效果 (局部彩色)

This photograph was taken with a DSC-TX55. 这是用DSC-TX55实际拍摄的照片. Shoot data: 1/40 sec.; F2.8; EV: 0.0; WB: Auto; ISO 200; Metering Mode: Multi Pattern

Product specifications for DSC-TX55(JE) including sensor type, resolution, zoom, and features like Smile Shutter and Superior Auto.

Full HD movie & 3D in one body, 30x Ultra high zoom with Hi-speed AF

集全高清动态影像和3D影像拍摄于一体, 30倍超高变焦, 快速AF取景



多视角液晶屏

Product specifications for DSC-HX100(JE) including sensor type, resolution, zoom, and features like Smile Shutter and Superior Auto.

Full HD movie & 3D in one body, 16x high zoom with Hi-speed AF

集全高清动态影像和3D影像拍摄于一体, 16倍高变焦, 快速AF取景



Product specifications for DSC-HX9(JE) including sensor type, resolution, zoom, and features like Smile Shutter and Superior Auto.

Full HD movie & 3D in one body with 3.5" Wide & Touch OLED panel

集全高清动态影像和3D影像拍摄于一体, 3.5"宽屏触摸OLED (有机发光显示屏) 面板



Product specifications for DSC-TX100(JE) including sensor type, resolution, zoom, and features like Smile Shutter and Superior Auto.

Rhinestone sparkle, elegant patterns-design variation created for stylish enjoyment

仿钻闪耀、时尚享受的多款雅致图案设计



Product specifications for DSC-T110D(JE) and DSC-T110(JE) including sensor type, resolution, zoom, and features like Smile Shutter and Intelligent Auto.

16.1 Megapixels CCD and 25mm wide-angle "G Lens" with 10x zoom

1610万像素CCD及10倍变焦的25mm广角"G镜头"



Product specifications for DSC-H70(JE) including sensor type, resolution, zoom, and features like Smile Shutter and Intelligent Auto.

Full HD movie & 3D in one body with Water, Shock, Dust and Freeze-proof capability

集全高清动态影像和3D影像拍摄于一体, 具备防水、防震、防尘和防冻功能



Product specifications for DSC-TX10(JE) including sensor type, resolution, zoom, and features like Smile Shutter and Superior Auto.

Environmental protection features: Waterproof (5.0m/16ft), Shockproof (1.5m/5ft), Dustproof, and Freezeproof (-10°C/14°F).

Multilingual Menu Display and Instruction Manual availability in multiple languages.

\*1 Movies and still images recorded with this camera can be output by TV that supports PAL System. \*2 The SteadyShot function may not work with excessive camera shake or extremely slow shutter speeds. \*3 Depending on the shooting environment, there may be times when faces cannot be detected and the shutter does not function. \*4 JIS/IEC International Protection Rating equivalent (Based on Sony Testing standards) 相当于JIS/IEC国际防护等级 (基于索尼测试标准) Note: Protection against damage and leakage are not guaranteed. Temperature and drop data results were internally determined by Sony.





16.1 Megapixels CCD and 25mm wide-angle Carl Zeiss lens with 5x zoom

1610万像素CCD及5倍变焦的 25mm广角卡尔·蔡司镜头



(S) Silver



(V) Violet

(N) Gold

(P) Pink

DSC-W570(JE)

Open Price

Table with specifications for DSC-W570: 16.1 Megapixels, Super HAD CCD, 5x Optical Zoom, 25mm Wide-angle, Optical SteadyShot, 720p HD Movie, 230K dots Clear Photo LCD, 2.7 type LCD.

Full HD movie & 3D in one body with 5x optical zoom

集全高清动态影像和3D影像拍摄于一体, 具备5倍光学变焦功能



(S) Silver



DSC-WX7(JE)

Open Price

Table with specifications for DSC-WX7: 16.2 Megapixels, Exmor R CMOS Sensor, 5x Optical Zoom, 25mm Wide-angle, Optical SteadyShot, AVCHD Full HD Movie, 460K dots Clear Photo LCD Plus, 2.8 type LCD.

14.1 Megapixels CCD and 26mm wide-angle Carl Zeiss lens with 4x zoom

1410万像素CCD及4倍变焦的 26mm广角卡尔·蔡司镜头



(S) Silver



(L) Blue

(P) Pink

(B) Black

DSC-W530(JE)

Open Price

Table with specifications for DSC-W530: 14.1 Megapixels, Super HAD CCD, 4x Optical Zoom, 26mm Wide-angle, SteadyShot, Motion JPEG, 230K dots Clear Photo LCD, 2.7 type LCD.

Joyfully express your personality with exciting, candy-like colouring

激动人心的糖果着色, 欢快彰显个性



DSC-J10(JE)

Open Price

Table with specifications for DSC-J10: 16.1 Megapixels, Super HAD CCD, 4x Optical Zoom, 35mm Wide-angle, SteadyShot, Motion JPEG, 230K dots Clear Photo LCD, 2.7 type LCD.

wonderfully simple.

1 Shoot 拍摄

Capture all the fun and excitement freely 随意捕捉所有乐趣和激情



2 Connect 连接

Manage movies and still images with the USB arm 利用USB接口管理动态影像和静态图像

Enjoy your contents with "bloggie" software 利用"bloggie"软件欣赏您拍摄的内容

3 Share 分享

Upload your contents with the Share-it-Later function 利用共享功能预先登记自己希望分享的内容, 从而实现快速上传

Keep your buddies up date with online sharing 利用在线分享保持与您的伙伴紧密联系



MHS-FS3(JE)

Open Price



3D high-definition (HD) movie shooting is now possible from a small, lightweight camera. Of course, regular 2D Full HD movies can also be produced.

Table with specs for MHS-FS3: Internal Memory 8 GB, Recording Time Up to Approx. 4h. 00 min.

Table with specs for MHS-FS3: Still Image Size 5.0 Megapixels, Exmor CMOS Sensor, SteadyShot, HDMI Output.



MHS-TS20K(JE)

Open Price



Take it all in with a 360-degree-view 360度视角全部收入

Table with specs for MHS-TS20K: Internal Memory 8 GB, Recording Time Up to Approx. 4h. 00 min.

Table with specs for MHS-TS20K: Still Image Size 12.8 Megapixels, Exmor CMOS Sensor, 25mm Wide-angle, SteadyShot, HDMI Output.

Multilingual Menu Display and Instruction Manual table with language options.

\*1 The SteadyShot function may not work with excessive camera shake or extremely slow shutter speeds. ... \*2 Depending on the shooting environment, there may be times when faces cannot be detected...

DSC-TX10 Usage Notes 使用注意事项. Precautions regarding covers. Battery/memory card cover and multi connector cover. Maintenance after using the camera in wet environments.

\*4 Recommended to be held horizontally when shooting and viewing 3D content. ... \*7 2D only. 仅限2D.

**Digital Camcorder Accessories 数码摄像机配件**

Please refer to page 35 for compatibility. 有关兼容性的内容, 请参阅第35页。

**Overseas Models 海外规格产品**

**Rechargeable Battery Pack 可重复充电电池**

<p><b>NP-FV100(JE)</b> Open Price</p> <p>MADE IN JAPAN 日本制造 (主机)</p> <p>●Voltage 电压: 6.8V ●Capacity 容量: 26.5Wh (3,900mAh) ●Mass 重量: 195g</p>	<p><b>NP-FV70(JE)</b> Open Price</p> <p>MADE IN JAPAN 日本制造 (主机)</p> <p>●Voltage 电压: 6.8V ●Capacity 容量: 14.0Wh (2,060mAh) ●Mass 重量: 96g</p>	<p><b>NP-FV50(JE)</b> Open Price</p> <p>MADE IN JAPAN 日本制造 (主机)</p> <p>●Voltage 电压: 6.8V ●Capacity 容量: 7.0Wh (1,030mAh) ●Mass 重量: 51g</p>
--	--	---

※V series battery is compatible with H/P battery "Handycam". V系列电池可兼容使用H/P系列电池的"Handycam"数码相机。

**Accessory Kit 配件套装**

<p><b>ACC-FV50B(JE)</b> Open Price</p> <p>MADE IN JAPAN 日本制造 (主机)</p> <p>※Battery only 仅电池</p> <p>●Mass 重量: 260g<sup>*1</sup> ●Bundled Accessories 随机配件: Rechargeable Battery: NP-FV50 / Soft Carrying Case: LCS-X21</p>	<p><b>ACC-BBV5(JE)</b> Open Price</p> <p>MADE IN JAPAN 日本制造 (主机)</p> <p>※Battery only 仅电池</p> <p>●Mass 重量: 70g<sup>*1</sup> ●Bundled Accessories 随机配件: Rechargeable Battery: NP-FV50 / Soft Carrying Case: LCS-BBD B</p>	<p><b>GP-AVT1(JE)</b> Open Price</p> <p>●Dimensions 尺寸: Max. Height 使用时: 96mm Folded Length 携带时: 132mm ●Mass 重量: 114g</p> <p>Convenient built-in Tripod 方便使用的内置三脚架 Remote Control Functions 遥控功能</p>
--	--	--

**Other Accessories Available in Japan 在日本可购买的其他配件**

**Carrying Case 便携包**

<p><b>LCS-U30</b> M.S.R.P. 4,410yen (tax excluded 4,200yen)</p> <p>●Dimensions (W x H x D) 尺寸(宽×高×深): 290 x 170 x 140mm ●Mass 重量: 405g</p>	<p><b>LCS-U20</b> M.S.R.P. 3,255yen (tax excluded 3,100yen)</p> <p>●Dimensions (W x H x D) 尺寸(宽×高×深): 220 x 150 x 140mm ●Mass 重量: 315g</p>	<p><b>LCS-U10</b> M.S.R.P. 2,730yen (tax excluded 2,600yen)</p> <p>●Dimensions (W x H x D) 尺寸(宽×高×深): 170 x 130 x 100mm ●Mass 重量: 215g</p>	<p><b>LCS-ACB</b> M.S.R.P. 4,410yen (tax excluded 4,200yen)</p> <p>●Dimensions (W x H x D) 尺寸(宽×高×深): 115 x 200 x 90mm ●Mass 重量: 140g</p>	<p><b>LCS-CXD</b> M.S.R.P. 3,675yen (tax excluded 3,500yen)</p> <p>●Dimensions (W x H x D) 尺寸(宽×高×深): 125 x 200 x 70mm ●Mass 重量: 110g</p>
--	--	--	---	---

**ActiFORCE™** "ActiFORCE" is a new generation power system. Battery capacity, boost charge, and the speed and accuracy of battery time remaining calculations have been improved when compared with previous "InfoLITHIUM" P-series batteries. "ActiFORCE"是新一代的电源系统。与此前的"InfoLITHIUM" P系列电池相比, 其电池容量、快速充电、电池剩余时间计算的速度和准确性等均有有所提高。

**Digital Still Camera Accessories 数码相机配件**

Please refer to page 35 for compatibility. 有关兼容性的内容, 请参阅第35页。

**Overseas Models 海外规格产品**

**Rechargeable Battery Pack 可重复充电电池**

<p><b>NP-BN1(JE)</b> Open Price</p> <p>●Voltage 电压: 3.6V ●Capacity 容量: 2.3Wh (630mAh) ●Mass 重量: 15g</p>	<p><b>NP-FG1(JE)</b> Open Price</p> <p>MADE IN JAPAN 日本制造 (主机)</p> <p>●Voltage 电压: 3.6V ●Capacity 容量: 3.4Wh (960mAh) ●Mass 重量: 27g</p>	<p><b>2NP-BN1(JE)</b> Open Price</p> <p>NEW</p> <p>●Dual rechargeable battery pack includes 2x NP-BN1</p>
---	--	---

**Accessory Kit 配件套装**

<p><b>ACC-CTBN(JE)</b> Open Price</p> <p>●Mass 重量: 60g<sup>*1</sup> ●Bundled Accessories 随机配件: Soft Carrying Case: LCS-CTBN / Rechargeable battery: NP-BN1 / Tripod: VCT-ACA</p>	<p><b>ACC-HDBN(JE)</b> Open Price</p> <p>●Bundled Accessories 随机配件: Rechargeable Battery: NP-BN1 / HDMI mini cable 2.0m: DLC-HEM20</p>	<p><b>ACC-HDFG(JE)</b> Open Price</p> <p>MADE IN JAPAN 日本制造 (主机)</p> <p>※Battery only 仅电池</p> <p>●Bundled Accessories 随机配件: Rechargeable Battery: NP-FG1 / HDMI mini cable 2.0m: DLC-HEM20</p>
--	--	--

**Intelligent Pantitler 智能跟拍底座**

**IPT-DS2(JE)**  
Open Price

●Dimensions (W x H x D) 尺寸(宽×高×深): 128 x 47 x 128mm ●Mass 重量: 210g

●Instruction Manual 使用说明书:  
Japanese / English / French / Spanish / German / Dutch / Swedish / Italian / Portuguese / Russian / Chinese (Simplified Chinese / Traditional Chinese) 中文 (简体中文 / 繁体中文) / Arabic / Korean

※The Digital Still Camera is sold separately. 数码相机另售。  
※Compatible Digital Still Camera : 兼容数码相机:  
DSC-TX100 / W570 / WX7 / HX9 / H70

With supplied tripod 附带三脚架

Party-shot™

1 Set "Cyber-shot" 设置"Cyber-shot"数码相机  
2 Search Face 搜索人脸  
3 Shoot Photo Automatically 自动拍摄照片

**Other Accessories Available in Japan 在日本可购买的其他配件**

**Carrying Case 便携包**

<p><b>LCJ-THF</b> NEW M.S.R.P. 3,255yen (tax excluded 3,100yen)</p> <p>●(B) Black ●(T) Brown ●(H) Gray ●(R) Red ●(N) Gold</p> <p>●Dimensions (W x H x D) 尺寸(宽×高×深): 96 x 66 x 23mm</p>	<p><b>LCS-THQ</b> M.S.R.P. 3,150yen (tax excluded 3,000yen)</p> <p>●(B) Black ●(W) White ●(L) Marine Blue ●(P) Vivid Pink ●(G) Lime Green</p> <p>●Dimensions (W x H x D) 尺寸(宽×高×深): 68 x 101 x 23mm</p>	<p><b>LCS-TWK</b> M.S.R.P. 3,255yen (tax excluded 3,100yen)</p> <p>●(B) Black ●(N) Gold ●(S) Silver ●(P) Pink ●(L) Blue</p> <p>●Dimensions (W x H x D) 尺寸(宽×高×深): 106 x 68 x 34mm</p>
--	---	---

\*1 The mass of the soft carrying case. 软便携包的重量。  
★For information about the prices of "Open Price" products, please contact your nearest Sony product retailer. ★All insets contained here in are simulated pictures only.  
★如需了解关于"Open Price(价格未定)"产品的价格信息, 请就近向索尼产品零售店联系咨询。★此处包含的所有插图均为模拟图片, 仅供参考。

**A fantastic way of displaying your digital photos. It allows you to expand your enjoyment of photos after taking them**

数码照片的梦幻显示方式。延展照片拍摄之后的乐趣



※Photo shown is image. 所示照片仅供参考。

**AVCHD™ video playback capabilities with vivid colors and contrast**  
兼容AVCHD™视频播放, 色彩生动, 对比鲜明

**2 GB DPF-VR100(JE)**  
Open Price

10.2 inch

Direct Card Slot, Auto orientation sensor, Alarm, Sony World Model

(B) Black

**Battery operated digital photo frame, for easy portability in the home**  
电池供电式数码相框, 居家随心摆放

**2 GB DPF-D830(JE)**  
Open Price

8 inch

Direct Card Slot, Auto orientation sensor, Sony World Model

(S) Silver

**View your favorite Motion JPEG movies and enjoy MP3 playback**  
观赏喜爱的Motion JPEG动态影像, 聆听MP3播放

**2 GB DPF-D820(JE)**  
Open Price

8 inch

Direct Card Slot, Auto orientation sensor, Sony World Model

(B) Black

**Let your favorite photos sparkle**  
靓丽展现中意的照片

●MADE WITH SWAROVSKI® ELEMENTS ●采用SWAROVSKI® ELEMENTS

**2 GB DPF-D720(JE)**  
Open Price

7 inch

Direct Card Slot, Auto orientation sensor, Sony World Model

(W) Crystal & White

**Simple function, Easy to use**  
功能简单, 使用方便

**128 MB DPF-D710(JE)**  
Open Price

7 inch

Direct Card Slot, Auto orientation sensor, Sony World Model

Fit for gift! 馈赠佳品

**It's a photo frame and printer all-in-one**  
数码相框照片打印一体机

**256 MB DPP-F800(JE)**  
Open Price

8 inch

Direct Card Slot, Auto orientation sensor, Sony World Model

(W) White

**Multilingual Menu Display**  
多语言菜单显示

Japanese / English / French / German / Spanish / Italian / Russian / Korean / Chinese (Simplified Chinese / Traditional Chinese) 中文 (简体中文 / 繁体中文) / Dutch / Portuguese / Arabic / Persian / Swedish / Norwegian / Danish / Finnish / Polish / Hungarian / Czech / Greek / Turkish / Thai / Malay

**Instruction Manual**  
使用说明书

Japanese / English / Chinese (Simplified Chinese) 中文 (简体中文) / Korean

**4 x 6 inch Color Print Pack**  
4×6英寸彩色打印套装  
**SVM-F120P(JE)**  
Open Price

※Please refer to page 36-37 for product specifications. 关于本产品的规格, 请参阅第36-37页。

**Recording Media 索尼存储卡**

<p><b>"Memory Stick PRO Duo"</b></p> <p>4GB <b>MS-MT4G(JE)</b> Open Price 2GB <b>MS-MT2G(JE)</b> Open Price</p> <p>MAGIC GATE™</p>	<p><b>"Memory Stick PRO-HG Duo HX"</b></p> <p>32GB <b>MS-HX32A(JE)</b> Open Price 16GB <b>MS-HX16A(JE)</b> Open Price 8GB <b>MS-HX8A(JE)</b> Open Price</p>	<p><b>SDHC Memory Card</b></p> <p>32GB <b>SF-32N4(JE)</b> Open Price 16GB <b>SF-16N4(JE)</b> Open Price 8GB <b>SF-8N4(JE)</b> Open Price 4GB <b>SF-4N4(JE)</b> Open Price</p>	<p><b>SD Memory Card</b></p> <p>2GB <b>SF-2N1(JE)</b> Open Price</p>	<p><b>microSDHC Memory Card</b></p> <p>16GB <b>SR-16A4(JE)</b> Open Price <b>NEW</b> 8GB <b>SR-8A4(JE)</b> Open Price <b>NEW</b> 4GB <b>SR-4A4(JE)</b> Open Price <b>NEW</b></p> <p>SD Memory Card conversion adaptor supplied. 附带SD存储卡转换适配器。</p>
--	---	---	--	---



# Professional quality in your pocket

掌中专业品质



## NEX-7K(JE)

Open Price **Coming Soon**  
Single lens kit  
Kit lens: E 18-55mm F3.5-5.6 OSS (B)

<b>24.3</b> Megapixels 2430万有效像素	<b>ISO 100-16000</b> ISO 100-16000	<b>Full HD Movie 50p / 50i / 25p</b> 全高清动态影像 50p / 50i / 25p	<b>Continuous shooting Up to 10fps</b> 最高每秒10帧的连拍
--	---------------------------------------	---	--

- Quick response, including high-speed AF and release time lag of only 0.02sec.
- Customizable, intuitive new TRINAVI operation for freer expression
- Speed Priority Continuous shooting at up to 10fps
- Lightweight and robust magnesium-alloy body

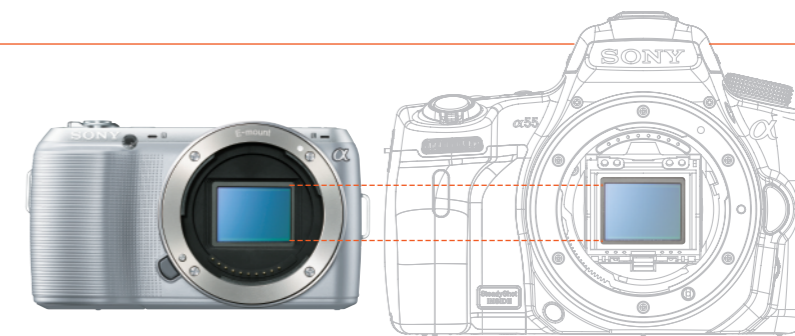
- 快速响应, 包括快速AF取景和仅0.02秒的释放延迟
- 可定制的直观全新TRINAVI操作, 任您自由表现
- 最高每秒10帧的速度优先连拍
- 轻便耐用的镁合金机身



921K dots Xtra Fine LCD monitor

## "Exmor" APS HD CMOS sensor for SLR-class photographic quality

"Exmor" APS高清CMOS影像传感器, 实现单反相机级别的摄影品质



## Background Defocus Control brings foreground subjects to life

背景散焦控制, 令前景拍摄主体栩栩如生



More background defocusing 更多背景散焦 Less background defocusing 更少背景散焦

## True HD movie recording with interchangeable-lens flexibility

灵活利用可互换镜头录制真实高清动态影像

	NEX-7	NEX-5N	NEX-C3
AVCHD (1920x1080)	●	●	—
MP4 (1440x1080)	●	●	—
MP4 (1280x720)	—	—	—
VGA (640x480)	●	●	●



## NEX-5ND(JE)

Open Price **NEW**  
Double lens kit  
Kit lens: E 16mm F2.8 E 18-55mm F3.5-5.6 OSS

<b>16.1</b> Megapixels 1610万有效像素	<b>ISO 100-25600</b> ISO 100-25600
--	---------------------------------------

<b>Full HD Movie 50p / 50i / 25p</b> 全高清动态影像 50p / 50i / 25p	<b>Continuous shooting Up to 10fps</b> 最高每秒10帧的连拍
---	--



921K dots Xtra Fine LCD monitor

- Quick response, including high-speed AF and release time lag of only 0.02sec.
- Touch screen operation for adjusting, shooting and viewing
- Lightweight and robust magnesium-alloy body
- 快速响应, 包括快速AF取景和仅0.02秒的释放延迟
- 触摸屏操作, 适合调节、拍摄和浏览
- 轻便耐用的镁合金机身

Touch Panel



## NEX-C3K(JE)

Open Price **NEW** \*2  
Single lens kit  
Kit lens: E 18-55mm F3.5-5.6 OSS

<b>16.2</b> Megapixels 1620万有效像素	<b>ISO 200-12800</b> ISO 200-12800
--	---------------------------------------

<b>720p HD Movie</b> 720p高清动态影像	<b>Continuous shooting Up to 5.5fps</b> 最高每秒5.5帧的连拍
------------------------------------	--



921K dots Xtra Fine LCD monitor

- Photo Creativity interface for easy, intuitive operation
- Speed Priority Continuous shooting at up to 5.5fps
- 适合轻松、直观操作的照片创作界面
- 最高每秒5.5帧的速度优先连拍

Functions accessible from the Photo Creativity interface 可从照片创作界面访问功能



Multilingual Menu Display 多语言菜单显示  
English / Chinese (Simplified Chinese / Traditional Chinese) 中文 (简体中文 / 繁体中文) / French / Korean / Portuguese / Spanish / Arabic / Persian / Thai / Malay

Instruction Manual 使用说明书  
English / Chinese (Simplified Chinese / Traditional Chinese) 中文 (简体中文 / 繁体中文) / Korean / Spanish / Portuguese

## Picture Effect Amazing new Picture Effect function for artistic expression

照片效果 惊艳的照片效果功能, 完美诠释艺术表现力



## Interchangeable Lens Digital Camera Accessories 数码微单相机 / 数码单电相机配件 [ For NEX-7 / NEX-5N / NEX-C3 / SLT-A35 ]

### Rechargeable Battery Pack 可重复充电电池

**NP-FW50(JE)**  
Open Price  
• Voltage 电压: 7.2V  
• Capacity 容量: 7.7Wh (1080mAh)  
• Mass 重量: 57g  
MADE IN JAPAN 日本制造 (主机)

### Accessory Kit 配件套装

**ACC-FWCA(JE)**  
Open Price  
• Bundled Accessories 随机配件:  
Rechargeable Battery: NP-FW50 / Wrapping Cloth: LCS-WR1AM / Shoulder Strap: STP-XS2AM / Lens Cap Holder: LCS-LC1AM  
MADE IN JAPAN 日本制造 (主机)  
※Battery only 仅电池

**ACC-HDFW(JE)**  
Open Price  
• Bundled Accessories 随机配件:  
Rechargeable Battery: NP-FW50 / HDMI mini cable 2.0m: DLC-HEM20  
MADE IN JAPAN 日本制造 (主机)  
※Battery only 仅电池

\*Please refer to page 36 for product specifications and page 21 for accessories. 关于本产品的规格, 请参阅第36页; 配件请参阅第21页。

\*The maximum length of time you can shoot continuously is approx. 29 minutes. The size of a movie file is limited to approx. 2GB. ★最长连续拍摄时间约为29分钟。动态影像档案大小上限约为2GB。

\*1 Movies and still images recorded with this camera can be output by TV that supports PAL System. 支持PAL制式的电视可输出本相机拍摄动态影像和静态图像。

※ CMOS Sensor photo is an image. CMOS影像传感器照片是示意图。  
★For information about the prices of "Open Price" products, please contact your nearest Sony product retailer. ★All insets contained here in are simulated pictures only. ★如需了解关于"Open Price(价格未定)"产品的价格信息, 请就近向索尼产品零售商联系咨询。★此处包含的所有插图均为模拟图片, 仅供参考。



# Never miss the moment

绝不错失良机



## PAL SLT-A77VQ(JE)

Open Price **Coming Soon**  
Single lens kit  
Kit lens: DT 16-50mm F2.8 SSM

<b>24.3</b> Megapixels 2430万有效像素	<b>ISO 100-16000</b> ISO 100-16000	<b>Full HD Movie 50p / 50i / 25p</b> 全高清动态影像 50p / 50i / 25p	<b>Continuous shooting Up to 12fps</b> 最高每秒12帧的连拍
--	---------------------------------------	---	--

- Ultra-high-speed 12fps continuous shooting with Full-time Continuous AF
- 19-point AF system with 11 cross sensors
- New XGA OLED Tru-Finder with 100% coverage
- Rigid magnesium alloy body

- 超高速每秒12帧连拍, 全时连续AF
- 19点AF系统, 11个十字传感器
- 全新的XGA OLED Tru-Finder, 100%覆盖范围
- 坚固的镁合金机身



## PAL SLT-A65VK(JE)

Open Price **Coming Soon**  
Single lens kit  
Kit lens: DT 18-55mm F3.5-5.6 SAM

<b>24.3</b> Megapixels 2430万有效像素	<b>ISO 100-16000</b> ISO 100-16000	<b>Full HD Movie 50p / 50i / 25p</b> 全高清动态影像 50p / 50i / 25p	<b>Continuous shooting Up to 10fps</b> 最高每秒10帧的连拍
--	---------------------------------------	---	--

- Ultra-high-speed 10fps continuous shooting with Full-time Continuous AF
- 15-point AF system with 3 cross sensors for pinpoint focus
- New XGA OLED Tru-Finder with 100% coverage

- 超高速每秒10帧连拍, 全时连续AF
- 15点AF系统, 3个十字传感器, 实现精确对焦
- 全新的XGA OLED Tru-Finder, 100%覆盖范围



## PAL SLT-A35K(JE)

Open Price **NEW**  
Single lens kit  
Kit lens: DT 18-55mm F3.5-5.6 SAM

<b>16.2</b> Megapixels 1620万有效像素	<b>ISO 100-12800</b> ISO 100-12800	<b>Full HD Movie 50i</b> 全高清动态影像 50i	<b>Continuous shooting Up to 5.5fps</b> 最高每秒5.5帧的连拍
--	---------------------------------------	---	--

- Tele-zoom High Speed Shooting with continuous AF at up to 7fps\*2
- 15-point AF system with 3 cross sensors for pinpoint focus
- Tru-Finder with 100% coverage

- 最高每秒7帧的远距变焦高速拍摄, 连续AF\*2
- 15点AF系统, 3个十字传感器, 实现精确对焦
- Tru-Finder, 100%覆盖范围



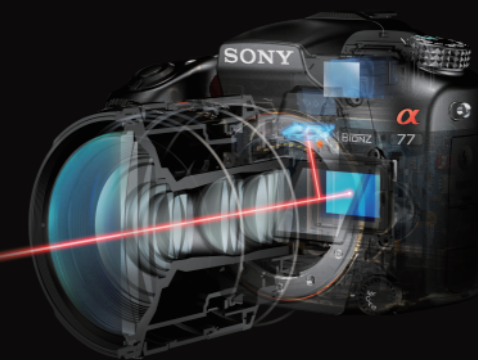
# Translucent Mirror Technology

## Translucent Mirror Technology for Full-time Continuous AF

半透镜技术实现, 全时连续AF

Exclusive Sony Translucent Mirror Technology eliminates the need for mechanical mirror movement and enables continuous precision phase-detection autofocus whether you're shooting stills or movies, or viewing via the viewfinder or LCD monitor. Another advantage is that the subject stays in view at the moment of capture.

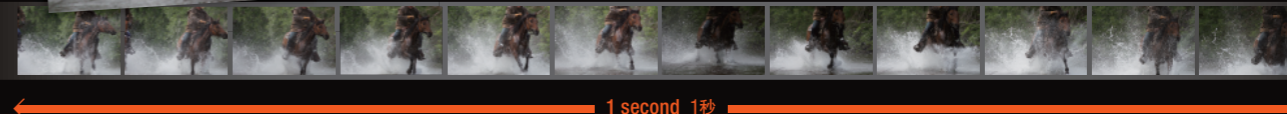
无论是拍摄静态图像或动态影像, 还是通过取景器或液晶屏浏览, 索尼独特的半透镜技术实现均可以免除机械反光镜的移动, 并且能够进行连续精确的相位检测自动对焦。另外一个优势是在拍摄时拍摄主体总处于视线之内。



## Ultra high-speed response 超高速响应

Sony's mirror-drive-free Translucent Mirror Technology enables professional level performance — 12fps continuous shooting with Full-time Continuous AF at 24.3-megapixel resolution. (SLT-A77V)

无需反光镜升降动作的索尼半透镜技术实现能够实现专业级性能——以2430万像素分辨率和全时连续AF实现每秒12帧连拍。(SLT-A77V)



## Quick AF movie 快速AF动态影像

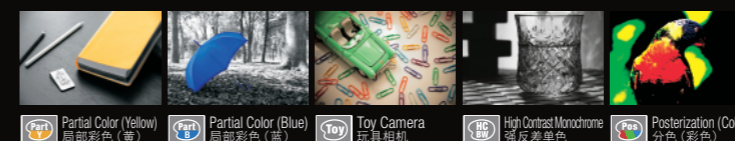
Translucent Mirror Technology enables Full-time Continuous AF during movie shooting while face detection maintains fast, high-precision subject focus at all times.

半透镜技术实现能够在拍摄动态影像时全时连续AF, 同时通过人脸检测始终维持对拍摄主体的快速、高精度的对焦。



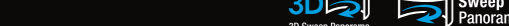
## Picture Effect: tools for greater expressive impact 照片效果: 增强表现力的工具

With DT 35mm F1.8 SAM (SAL35F18) in Picture Effect "Partial Color (Red)" mode 采用DT 35mm F1.8 SAM (SAL35F18), 照片效果"局部彩色(红)"模式



## Sweep Panorama (2D/3D) 扫描全景 (2D/3D)

扫描全景 (2D/3D)



With DT 16-105mm F3.5-5.6 (SAL16105) in Sweep Panorama Mode 采用DT 16-105mm F3.5-5.6 (SAL16105), 扫描全景模式

Multilingual Menu Display 多语言菜单显示  
English / Chinese (Simplified Chinese / Traditional Chinese) 中文 (简体中文 / 繁体中文) / French / Korean / Portuguese / Spanish / Arabic / Persian / Thai / Malay

Instruction Manual 使用说明书  
English / Chinese (Simplified Chinese / Traditional Chinese) 中文 (简体中文 / 繁体中文) / Korean / Portuguese / Spanish

\*Please refer to page 37 for product specifications and page 21 for accessories. 关于本产品的规格, 请参阅第37页; 配件请参阅第21页。

\*The maximum length of time you can shoot continuously is approx. 29 minutes. The size of a movie file is limited to approx. 2GB. ★最长连续拍摄时间约为29分钟。动态影像档案大小上限约为2GB。  
\*1 Movies and still images recorded with this camera can be output by TV that supports PAL System. 支持PAL制式的电视可输出本相机拍摄的动态影像和静态图像。 \*2 Image size is 8.4 megapixels in this mode. 该模式下的图像尺寸为840万像素。

## Interchangeable Lens Digital Camera Accessories

数码微单相机 / 数码单电相机配件

[ For SLT-A77V / SLT-A65V ]

## Rechargeable Battery Pack 可重复充电电池

NP-FM500H(JE)  
Open Price  
• Voltage 电压: 7.2V  
• Capacity 容量: 11.8Wh (1650mAh)  
• Mass 重量: 78g



MADE IN JAPAN 日本制造(主机)



★For information about the prices of "Open Price" products, please contact your nearest Sony product retailer. ★All insets contained here in are simulated pictures only. ★如需了解关于"Open Price(价格未定)"产品的价格信息, 请就近向索尼产品零售商联系咨询。★此处包含的所有插图均为模拟图片, 仅供参考。

### A series

NWZ-A866(JE)  
● (B) Black

NWZ-A865(JE)  
● (W) White ● (B) Black

## Hybrid Operation with touch panel, and Wireless Streaming with superior sound experience

采用触摸屏混合操作 超高音质无线世界体验

**Built-in Memory**  
**32 GB** NWZ-A866(JE)  
Open Price **Coming Soon**

**Built-in Memory**  
**16 GB** NWZ-A865(JE)  
Open Price **Coming Soon**

**Bluetooth**  
The Bluetooth function is applicable in Bahrain / Iran / Kuwait / Lebanon / Qatar / Saudi Arabia / UAE / Bangladesh / Bhutan / Brunei / Cambodia / Indonesia / Malaysia / Maldives / Myanmar / Nepal / Philippines / Singapore / Sri Lanka / Thailand / Vietnam / HongKong / Korea / Taiwan / Australia / New Zealand

**FMtuner FM调频** 87.5 >>>> 108.0 MHz  
**Music 音乐** 23 h. 连续播放23小时  
**Video 视频** 5 h. 连续播放5小时

**12 TONE ANALYSIS**  
**Audio Formats (Codec) 音频格式(编解码器)**  
MP3 / WMA\*3 / AAC-LC\*3 / Linear PCM

**Multilingual Menu Display 多语言菜单显示**  
English / French / Spanish / Russian / Chinese (Simplified Chinese / Traditional Chinese) / 中文 (简体中文 / 繁体中文) / Korean / Portuguese / German / Italian / Japanese / Polish / Turkish

**Instruction Manual \*6 使用说明书**  
English / Chinese (Traditional Chinese) 中文 (繁体中文)

※Please refer to the feature icons below. 关于功能图标, 请参阅本页以下部分。

### E series

● (L) Blue  
● (P) Pink  
● (S) Silver  
● (B) Black

## Irresistible small player, high sound quality, Synchronized Lyrics\*7, 30hrs of battery life

娇小诱人的播放器, 高音质, 歌词同步\*7, 30小时电池续航

**Built-in Memory**  
**4 GB** NWZ-E053(JE)  
Open Price

**FMtuner FM调频** 87.5 >>>> 108.0 MHz  
**Music 音乐** 30 h. 连续播放30小时

**12 TONE ANALYSIS**  
**Audio Formats (Codec) 音频格式(编解码器)**  
MP3 / WMA / AAC-LC\*3 / Linear PCM

**Multilingual Menu Display 多语言菜单显示**  
English / French / Spanish / Russian / Chinese (Simplified Chinese / Traditional Chinese) / 中文 (简体中文 / 繁体中文) / Korean / Portuguese / German / Italian / Japanese / Polish / Turkish

**Instruction Manual \*6 使用说明书**  
English / Chinese (Traditional Chinese) 中文 (繁体中文)

※Please refer to page 39 for product specifications. 关于本产品的规格, 请参阅第39页。

### S series

NWZ-S764(JE)  
● (N) Gold  
● (W) White  
● (B) Black

NWZ-S764BT(JE)  
● (B) Black

## Wireless listening Experience and File sharing with premium sound and long battery life

享受无线世界及轻松传输功能 高品质音质和长寿命电池

**Built-in Memory**  
**8 GB** NWZ-S764(JE)  
Open Price **Coming Soon**

**Built-in Memory**  
**8 GB** NWZ-S764BT(JE)  
Open Price **Coming Soon**

**Bluetooth**  
The Bluetooth function is applicable in Bahrain / Iran / Kuwait / Lebanon / Qatar / Saudi Arabia / UAE / Bangladesh / Bhutan / Brunei / Cambodia / Indonesia / Malaysia / Maldives / Myanmar / Nepal / Philippines / Singapore / Sri Lanka / Thailand / Vietnam / HongKong / Korea / Taiwan / New Zealand

**FMtuner FM调频** 87.5 >>>> 108.0 MHz  
**Music 音乐** 23 h. 连续播放23小时  
**Video 视频** 5 h. 连续播放5小时

**12 TONE ANALYSIS**  
**Audio Formats (Codec) 音频格式(编解码器)**  
MP3 / WMA\*3 / AAC-LC\*3 / Linear PCM

**Bluetooth headphones supplied 附带Bluetooth耳机**

**Instruction Manual \*6 使用说明书**  
English / Chinese (Simplified Chinese / Traditional Chinese) 中文 (简体中文 / 繁体中文) / Korean / Arabic / French / German / Spanish / Dutch / Italian / Portuguese / Swedish / Danish / Finnish / Russian / Hungarian / Czech / Turkish / Polish / Greek / Slovak / Norwegian / Ukrainian / Brazilian Portuguese / Romanian / Bulgarian / Slovene

※Please refer to the feature icons below. 关于功能图标, 请参阅本页以下部分。

### W series

● (P) Pink ● (W) White  
● (L) Blue ● (B) Black

## Wire-free and Water-resistant Compact and light desing for comfortable fit

无线且防水 佩戴舒适的小巧轻便设计

**Built-in Memory**  
**2 GB** NWZ-W262(JE)  
Open Price **Coming Soon**

**Music 音乐** 8 h. 连续播放8小时  
**Water Resistance 防水**

**12 TONE ANALYSIS**  
**Audio Formats (Codec) 音频格式(编解码器)**  
MP3 / WMA / AAC-LC\*3 / Linear PCM

**ZAPPIN**

**Water Resistance 防水**  
Washing under running water • Place under running tap (low/medium flow) and wash with hand. • Do not use brush, sponge, soap or detergent. Taking a shower • Do not immerse in water. • Avoid contact with use of shampoo, conditioner, face wash and soap. • Do not use with high pressure showers.  
流水清洗 • 置于(低速/中速)流动的自来水下并用手清洗。 • 请勿使用刷子、海绵、肥皂或洗涤剂。冲洗 • 请勿浸入水中。 • 避免接触使用洗发液、护发剂、洁面乳和肥皂。 • 请勿使用高压喷头。

**Instruction Manual \*6 使用说明书**  
English / Chinese (Simplified Chinese / Traditional Chinese) 中文 (简体中文 / 繁体中文) / Korean / Arabic / French / German / Spanish / Dutch / Italian / Portuguese / Swedish / Danish / Finnish / Russian / Hungarian / Czech / Turkish / Polish / Greek / Slovak / Norwegian / Ukrainian / Brazilian Portuguese / Romanian / Bulgarian / Slovene

※Please refer to page 39 for product specifications. 关于本产品的规格, 请参阅第39页。

### E series

NWZ-E463(JE)  
● (P) Pink  
● (G) Green  
● (L) Blue  
● (R) Red  
● (N) Gold  
● (B) Black

NWZ-E463K(JE)  
● (B) Black

## Fun and Fresh colors and unique attractive design, with an enriched user interface

愉快鲜艳的色彩, 独具魅力的设计, 丰富的用户界面

**Built-in Memory**  
**4 GB** NWZ-E463(JE)  
Open Price **Coming Soon**

**Built-in Memory**  
**4 GB** NWZ-E463K(JE)  
Open Price **Coming Soon**

**FMtuner FM调频** 87.5 >>>> 108.0 MHz  
**Music 音乐** 50 h. 连续播放50小时  
**Video 视频** 10 h. 连续播放10小时

**12 TONE ANALYSIS**  
**Audio Formats (Codec) 音频格式(编解码器)**  
MP3 / WMA\*3 / AAC-LC\*3 / Linear PCM

**Stereo speaker supplied 附带立体声扬声器**

**Instruction Manual \*6 使用说明书**  
English / Chinese (Simplified Chinese / Traditional Chinese) 中文 (简体中文 / 繁体中文) / Korean / Arabic / Spanish / Russian / Turkish / Ukrainian

※Please refer to the feature icons below. 关于功能图标, 请参阅本页以下部分。

**Feature Icons 功能图标**

- Touch Panel 触摸屏
- Digital Amplifier 数字放大器
- Bluetooth 蓝牙
- Karaoke Mode 卡拉OK模式
- Synchronized Lyrics 歌词同步
- Language Study 语言学习

**Multilingual Menu Display 多语言菜单显示**  
German / English / Spanish / French / Italian / Polish / Portuguese / Russian / Turkish / Japanese / Korean / Chinese (Simplified Chinese / Traditional Chinese) 中文 (简体中文 / 繁体中文)

**Instruction Manual \*6 使用说明书**  
English / Chinese (Simplified Chinese / Traditional Chinese) 中文 (简体中文 / 繁体中文) / Korean / Arabic / Spanish / Russian / Turkish / Ukrainian

※Please refer to page 38-39 for product specifications. 关于本产品的规格, 请参阅第38-39页。

### B series

NWZ-B162F(JE)  
● (B) Black  
● (N) Gold  
● (P) Pink  
● (G) Green  
● (L) Blue  
● (R) Red

NWZ-B162FEK(JE)  
● (B) Black  
● (R) Red

## Simple & Easy function. My first MP3 Player

功能简单, 适于使用我的第一只MP3播放器

**Built-in Memory**  
**2 GB** NWZ-B162F(JE)  
Open Price

**Built-in Memory**  
**2 GB** NWZ-B162FEK(JE)  
Open Price

**Headphones [MDR-EX50LP(JE)] supplied 附带耳机[MDR-EX50LP(JE)]**

**FMtuner FM调频** 87.5 >>>> 108.0 MHz  
**Music 音乐** 18 h. 连续播放18小时

**12 TONE ANALYSIS**  
**Audio Formats (Codec) 音频格式(编解码器)**  
MP3 / WMA\*3

**ZAPPIN**

※Please refer to page 27 for MDR-EX50LP(JE). 关于MDR-EX50LP(JE), 请参阅第27页。

**Multilingual Menu Display 多语言菜单显示**  
English / French / Spanish / Russian / Chinese (Simplified Chinese / Traditional Chinese) / 中文 (简体中文 / 繁体中文) / Korean / Portuguese

**Instruction Manual \*6 使用说明书**  
English / Chinese (Simplified Chinese / Traditional Chinese) 中文 (简体中文 / 繁体中文) / Korean / Arabic

※Please refer to page 39 for product specifications. 关于本产品的规格, 请参阅第39页。

\*1 When playing MP3 128kbps. The time is approximated when "Bluetooth," "DSEE," "Clear Stereo," "Equalizer," "VPT," "Dynamic Normalizer," "DPC (speed control)," "Display Lyrics," "Karaoke/Language Study," "Battery Care" are deactivated, the Brightness of the Common Setting is set to "3", and "Screen Off Timer" is set to "30 seconds". 当播放MP3 128kbps时, 对于所估算的大致时长, 其估算条件为: "Bluetooth (蓝牙)," "DSEE (数码音效提升引擎)," "Equalizer (均衡器)," "VPT (虚拟环绕立体声技术)," "Dynamic Normalizer (音量子平衡器)," "DPC (数码播放速度控制)," "Display Lyrics (歌词显示)," "Karaoke/Language Study (卡拉OK语言学习)," "Battery Care (电池保养)" 功能均被取消, 并将Common Setting (一般设定) 选项中的Brightness (亮度) 设置为"3", "Screen Off Timer (屏幕关闭定时器)" 设置为"30 seconds (30秒)". \*2 When playing MPEG-4 384kbps. The time is approximated when "Bluetooth," "DSEE," "Clear Stereo," "Equalizer," "VPT," "Dynamic Normalizer," "DPC (speed control)," "Display Lyrics," "Karaoke/Language Study," "Battery Care" are deactivated, the Brightness of the Common Setting is set to "3", and "Screen Off Timer" is set to "30 seconds". 当播放MPEG-4 384kbps时, 对于所估算的大致时长, 其估算条件为: "Bluetooth (蓝牙)," "DSEE (数码音效提升引擎)," "Equalizer (均衡器)," "VPT (虚拟环绕立体声技术)," "Dynamic Normalizer (音量子平衡器)," "DPC (数码播放速度控制)," "Display Lyrics (歌词显示)," "Karaoke/Language Study (卡拉OK语言学习)," "Battery Care (电池保养)" 功能均被取消, 并将Common Setting (一般设定) 选项中的Brightness (亮度) 设置为"3", "Screen Off Timer (屏幕关闭定时器)" 设置为"30 seconds (30秒)". \*3 Copyright protected files cannot be played back. 不会播放受著作权保护的相关文件。 \*4 When playing MP3 128kbps. The time is approximated when "DSEE," "Clear Stereo," "Equalizer," "VPT," "Dynamic Normalizer," "DPC (speed control)," "Display Lyrics," "Karaoke/Language Study," "Battery Care" are deactivated, the Brightness of the Common Setting is set to "3", and "Screen Off Timer" is set to "30 seconds". 当播放MP3 128kbps时, 对于所估算的大致时长, 其估算条件为: "DSEE (数码音效提升引擎)," "Clear Stereo (高保真立体声)," "Equalizer (均衡器)," "VPT (虚拟环绕立体声技术)," "Dynamic Normalizer (音量子平衡器)," "DPC (数码播放速度控制)," "Display Lyrics (歌词显示)," "Karaoke/Language Study (卡拉OK语言学习)," "Battery Care (电池保养)" 功能均被取消, 并将Common Setting (一般设定) 选项中的Brightness (亮度) 设置为"3", "Screen Off Timer (屏幕关闭定时器)" 设置为"30 seconds (30秒)". \*5 When playing MPEG-4 384kbps. The time is approximated when "DSEE," "Clear Stereo," "Equalizer," "VPT," "Dynamic Normalizer," "DPC (speed control)," "Display Lyrics," "Karaoke/Language Study," "Battery Care" are deactivated, the Brightness of the Common Setting is set to "3", and "Screen Off Timer" is set to "30 seconds". 当播放MPEG-4 384kbps时, 对于所估算的大致时长, 其估算条件为: "DSEE (数码音效提升引擎)," "Clear Stereo (高保真立体声)," "Equalizer (均衡器)," "VPT (虚拟环绕立体声技术)," "Dynamic Normalizer (音量子平衡器)," "DPC (数码播放速度控制)," "Display Lyrics (歌词显示)," "Karaoke/Language Study (卡拉OK语言学习)," "Battery Care (电池保养)" 功能均被取消, 并将Common Setting (一般设定) 选项中的Brightness (亮度) 设置为"3", "Screen Off Timer (屏幕关闭定时器)" 设置为"30 seconds (30秒)". \*6 In the built-in memory, 内置记忆体。 \*7 Support LRC file format. 支持LRC文件格式。 \*8 When playing MP3 128kbps. The time is approximated when "Battery Care," "DSEE," "Clear Stereo," "Equalizer," "VPT," "Dynamic Normalizer" are deactivated, the Brightness of the Common Setting is set to "3", and "Screen Off Timer" is set to "30 seconds". 当播放MP3 128kbps时, 对于所估算的大致时长, 其估算条件为: "Battery Care (电池保养)," "DSEE (数码音效提升引擎)," "Clear Stereo (高保真立体声)," "Equalizer (均衡器)," "VPT (虚拟环绕立体声技术)," "Dynamic Normalizer (音量子平衡器)" 功能均被取消, 并将Common Setting (一般设定) 选项中的Brightness (亮度) 设置为"3", "Screen Off Timer (屏幕关闭定时器)" 设置为"30 seconds (30秒)". \*9 The time may differ depending on ambient temperature or the status of use. 所估算的时长会因环境温度或使用状态而异。 \*10 During continuous playback in MP3 128kbps at power save mode "Super" when "LED" is set to "Off," "Equalizer," "Bass" are not in use. Actual battery life may vary based on usage patterns, environment and battery condition. 在节能模式设置为"Super (超级)," "LED (发光二极管)" 设置为"Off (关闭)," "Equalizer (均衡器)" 和"Bass (重低音)" 均未启用的状态下, 连续播放MP3 128kbps时, 电池的实际使用寿命可能会因使用方式、环境条件和电池本身的不同而异。

★For information about the prices of "Open Price" products, please contact your nearest Sony product retailer. ★All insets contained here in are simulated pictures only. ★如需了解关于"Open Price(价格未定)"产品的价格信息, 请就近向索尼产品零售店进行咨询。★此处包含的所有插图均为模拟图片, 仅供参考。

Noise Canceling Headphones

降噪耳机



Greatly enhanced digital noise canceling capability  
高效降噪功能

Reduces up to **99%\*** Ambient noise  
最高降低99%环境噪声

**MDR-NC600D(JE)**  
Open Price

DIGITAL NOISE CANCELING

In-flight plug adaptor and Unimatch plug adaptor supplied

L shaped stereo mini plug  
Straight stereo mini plug

Large 16mm driver units with digital equalizer and Full Digital Amplifier  
16mm大驱动单元，带有数字均衡器和全数字放大器

Reduces up to **98.4%\*** Ambient noise  
最高降低98.4%环境噪声

**MDR-NC300D(JE)**  
Open Price

DIGITAL NOISE CANCELING

In-flight plug adaptor supplied

L shaped stereo mini plug

Large 40mm driver units, Full Digital Amplifier and Digital Equalizer with light weight design  
40mm大驱动单元，全数字放大器和数字均衡器，轻便设计

Reduces up to **98.2%\*** Ambient noise  
最高降低98.2%环境噪声

**MDR-NC200D(JE)**  
Open Price **Coming Soon**

DIGITAL NOISE CANCELING

In-flight plug adaptor supplied

L shaped stereo mini plug

High sound quality and wearing comfort in three color variations  
高音质，佩戴舒适，三种颜色可选

Reduces up to **90%\*** Ambient noise  
最高降低90%环境噪声

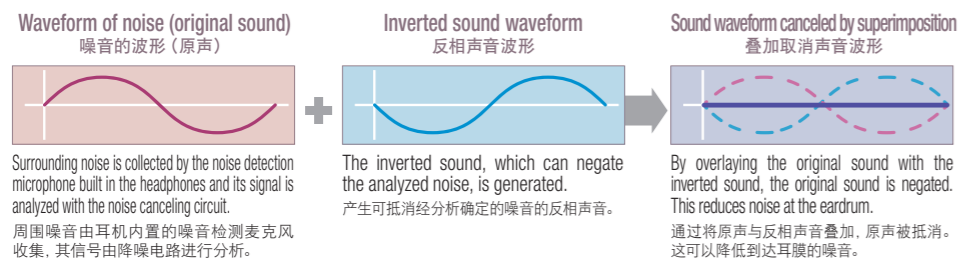
**MDR-NC33(JE)**  
Open Price

DIGITAL NOISE CANCELING

In-flight plug adaptor supplied

L shaped stereo mini plug

Principle of operation of the noise canceling headphone 降噪耳机的工作原理



Recommended for use in:  
推荐的使用环境:



EX series

EX系列



**MDR-EX10LP(JE)**  
Open Price

EX

- Choose from 14 colors to suit your personal music player and your fashion sense
- 14种颜色任选，搭配您的个性音乐播放器，满足您的时尚品味



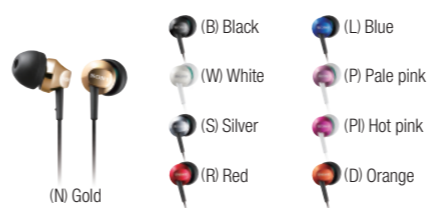
**MDR-EX20LP(JE)**  
Open Price

- Fun and cool colors, ensuring good sound quality
- 酷而有趣的颜色，确保优良音质



**MDR-EX80LP(JE)**  
Open Price

- MADE WITH SWAROVSKI ZIRCONIA or Crystal Cut Design for stylish women
- 采用SWAROVSKI ZIRCONIA或水晶切割设计制造，适合时尚女性



**MDR-EX50LP(JE)**  
Open Price

EX

- Deep bass sound is reproduced with High Density acoustic resistor
- 采用高密度声阻重现下潜低音



**MDR-EX57SL(JE)**  
Open Price

EX plus

- Casual design inner ear headphones with even better fit and sound quality
- 休闲设计风格的入耳式耳机，佩戴更舒适，展现完美音质



**MDR-EX77SL(JE)**  
Open Price

EX plus

- Powerful bass and clear mid- and high-tones
- 超强震撼的重低音效果和清晰的中、高频音质



**MDR-EX310SL(JE)**  
Open Price

EX monitor

- Stay-in design for a more secure fit
- 入耳式设计，佩戴更加稳妥



**MDR-EX510SL(JE)**  
Open Price

EX monitor

- 13.5mm dynamic type driver units
- 13.5mm动态驱动单元



**MDR-EX600(JE)**  
Open Price

EX monitor

- 16mm dynamic type driver units
- 16mm动态驱动单元

Active Style Headphones [Designed for workouts]

运动式耳机 [专为体育锻炼而设计]



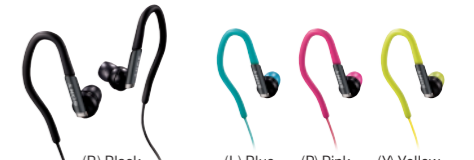
**MDR-AS51G(JE)**  
Open Price **Coming Soon**

- Lightweight, soft neck band design
- 重量极轻的软颈带式设计



**MDR-AS21J(JE)**  
Open Price **Coming Soon**

- The vertical and soft loop-hangers are great for intense workouts
- 直立的软环挂架非常适合于从事较为激烈的活动



**MDR-AS41EX(JE)**  
Open Price **Coming Soon**

- Recommended for fast movement and high-impact workouts
- 建议用于快速运动或高冲击性活动中

Instruction Manual 使用说明书  
MDR-NC600D / NC300D / NC200D / NC100D / NC33 / NC7 : English / Japanese

MDR-EX10LP / EX20LP / EX80LP / EX50LP / EX310SL / EX510SL / EX600 / AS51G / AS21J / AS41EX: English / Chinese (Traditional Chinese) 中文 (繁体中文) / Korean

MDR-EX57SL / EX77SL: English / Chinese (Simplified Chinese) 中文 (简体中文)

\*1 Under the Sony measurement standard. The noise canceling effect may not be pronounced in a very quiet environment, or some noise may be heard. Ambient noise is not reduced to zero. 根据索尼测试标准。在非常安静的环境中，降噪功能的效果也许并不显著，或者有可能听到某些噪音。环境噪音不会被降低至零。 \*2 Extension cord 延长线 \*3 (N) Classic gold, (G) Citrus Green, (S) Shiny silver, (L) Aqua blue, (NI) Pink gold, and (P) Baby pink are MADE WITH SWAROVSKI ZIRCONIA. 采用施华洛世奇锆石的(N)古典金、(G)柑橘绿、(S)闪亮银、(L)水蓝色、(NI)玫瑰金及(P)婴儿粉。

★For information about the prices of "Open Price" products, please contact your nearest Sony product retailer. ★如需了解关于"Open Price(价格未定)"产品的价格信息，请就近向索尼产品零售商联系咨询。

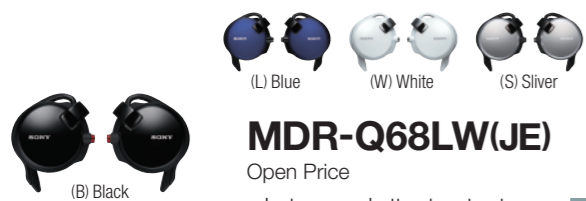


Headphones /



Speaker

耳机 / 扬声器



(L) Blue (W) White (S) Silver  
**MDR-Q68LW(JE)**  
Open Price

- Just press a button to retract both neck and plug cords
- 仅需轻触一键, 即可收回颈链式耳机线和插头连线



(P) Pink (V) Violet (W) White  
**SRS-TP1(JE)**  
Open Price

- No batteries required. 50mm-diameter speaker unit
- 无需电池。直径为50mm的扬声器单元



**SRS-M30(JE) (pair)**  
M.S.R.P. 4,200yen  
(tax excluded 4,000yen)

- Runs on both AC power (AC 100 to 240 V) and dry-cell batteries
- 既可由交流电源(AC 100-240 V)供电, 亦可由干电池供电



**SRS-TD60(JE)**  
Open Price

- Aluminum-cone satellite speakers for clear vocal midrange playback
- 铝质锥形卫星喇叭可提供清晰的中频声音再现



**Instruction Manual 使用说明书**

**MDR-Q68LW:** English / Chinese (Simplified Chinese / Traditional Chinese) 中文 (简体中文 / 繁体中文) / Korean

**SRS-TP1:** English / French / Portuguese / Spanish / Italian / German / Dutch / Russian / Chinese (Simplified Chinese / Traditional Chinese) 中文 (简体中文 / 繁体中文) / Korean / Swedish

**SRS-M30:** English / French / Spanish

**SRS-TD60:** English / French / Spanish / Korean / Chinese (Simplified Chinese / Traditional Chinese) 中文 (简体中文 / 繁体中文)



Compact Cassette Recorder /



CD Walkman®

小型盒带录音机 / CD播放器



**TCM-400DV(JE)**  
M.S.R.P. 5,250yen (tax excluded 5,000yen)

- V.O.R feature automatically starts recording when sound is detected
- Double-recording-time mode, doubles the recording time
- V.O.R声控录音功能, 能够在检测到声音时自动开始进行录音
- 在Double-recording-time(录音时长加倍)模式下, 可获得双倍录音时长



**D-NE241(JE)**  
Open Price

- Playback of CD-R and CD-RW is enabled
- Incorporates G-Protection, a powerful anti-skip feature
- 可以进行CD-R和CD-RW的重放
- 搭载了永无跳音的G-Protection防止声音跳读

23h. OF PLAYBACK

MP3 when using 2 AA alkaline batteries.



Radio | 收音机

International shortwave broadcast receivable radio / Card size radio [Traditional Japanese design] 可接收国际短波广播的收音机 / 卡片收音机 [传统日本设计]

MADE IN JAPAN 日本制造 (主机)



**ICF-SW7600GR(JE)**  
M.S.R.P. 42,000yen (tax excluded 40,000yen) Stereo



**ICF-SW35(JE)**  
M.S.R.P. 20,790yen (tax excluded 19,800yen) Stereo



MADE IN JAPAN 日本制造 (主机)



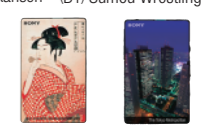
**ICF-SW22(JE)**  
M.S.R.P. 13,650yen (tax excluded 13,000yen) Monaural



**ICF-SW11(JE)**  
M.S.R.P. 8,190yen (tax excluded 7,800yen) Stereo



MADE IN JAPAN 日本制造 (主机)



**SRF-220(JE)**  
M.S.R.P. 6,300yen (tax excluded 6,000yen)



Compact size radio 小型收音机

MADE IN JAPAN 日本制造 (主机)



**SRF-T615(JE)**  
M.S.R.P. 9,870yen (tax excluded 9,400yen)



- FM stereo / AM / PLL synthesizer radio
- FM立体声/AM/PLL 合成器收音机



**SRF-M97(JE)**  
M.S.R.P. 8,190yen (tax excluded 7,800yen)



- Clip (on back side) for carrying convenience
- 夹子位于背面携带更方便

MEGA BASS



**SRF-S84(JE)**  
M.S.R.P. 5,040yen (tax excluded 4,800yen)



- Compact, cigarette-lighter-sized body
- 小巧的机身, 大小如同打火机

MEGA BASS

**ICF-R46(JE)**  
M.S.R.P. 6,825yen (tax excluded 6,500yen)



- Only 12.4mm slimness and slips easily into your breast pocket
- 仅12.4mm的纤薄机身, 可轻易置于胸袋内

**ICF-T46(JE)**  
M.S.R.P. 4,725yen (tax excluded 4,500yen)



- Only 12.4mm slimness and slips easily into your breast pocket
- 仅12.4mm的纤薄机身, 可轻易置于胸袋内

IC Recorder | 数码录音棒

Internal Memory 4GB **ICD-SX713(JE)**  
Open Price



Stereo Recording

- CD Quality Recording for Business and Live Music recording
- High Quality microphone capture voice clearly at distance recording
- CD品质录音, 适合商务会议和现场音乐录音
- 高品质麦克风捕捉清晰人声, 适合远距离录音

LinearPCM MP3 S-MiC RECORDING SYSTEM for Windows® 7 / Vista / XP for Macintosh® 10.2.8 or later

Internal Memory 2GB **ICD-BX112(JE)**  
Open Price



Monaural Recording

- Easy to use IC recorder with 2GB internal memory for extended recording
- 易用型数码录音棒, 2GB内存容量, 适合长时间录音

MP3

IC RECORDER

Internal Memory 4GB **ICD-UX513F(JE)**  
Open Price



Stereo Recording

- 3-in-one Stereo Voice Recorder, Music Playback and USB Memory
- Capable of Linear PCM recording
- 三合一立体声数码录音棒, 音乐播放和USB随身闪存
- 具有线性PCM录音功能

LinearPCM MP3 S-MiC RECORDING SYSTEM for Windows® 7 / Vista / XP for Macintosh® 10.2.8 or later

Internal Memory 2GB **ICD-UX512F(JE)**  
Open Price



(S) Silver

(P) Pink

Rec Time (Approx.) 录音时长(约)

ICD-SX713(JE)		ICD-UX513F(JE)		ICD-UX512F(JE)		ICD-BX112(JE)	
Internal Memory 内存容量		Internal Memory 内存容量		Internal Memory 内存容量		Internal Memory 内存容量	
LP-----1,073h.	SP-----178h.	LP-----1,073h.	SP-----178h.	LP-----536h.	SP-----89h. 25min.	LP-----534h. 25min.	SP-----89h.
STLP-----67h. 5min.	ST-----44h. 40min.	STLP-----67h. 5min.	ST-----44h. 40min.	STLP-----33h. 30min.	ST-----22h. 20min.	SHQ-----22h. 15min.	HQ-----33h. 20min.
STHQ-----26h. 45min.	Linear PCM-----6h.	Linear PCM-----6h.	Linear PCM-----6h.	Linear PCM-----3h.			

**Multilingual Menu Display 多语言菜单显示**

**ICD-SX713 / UX513F / UX512F:** English / Chinese (Simplified Chinese / Traditional Chinese) 中文 (简体中文 / 繁体中文) / French / German / Italian / Japanese / Korean / Russian / Spanish / Thai

**ICD-BX112:** English

**Instruction Manual 使用说明书**

**ICD-SX713 / UX513F / UX512F:** English / Chinese (Simplified Chinese / Traditional Chinese) 中文 (简体中文 / 繁体中文) / Korean / Spanish

**ICD-BX112:** English / Chinese (Simplified Chinese / Traditional Chinese) 中文 (简体中文 / 繁体中文) / Korean / Spanish / Arabic / Persian

**Instruction Manual 使用说明书**

**TCM-400DV:** English / Russian / Chinese (Simplified Chinese / Traditional Chinese) 中文 (简体中文 / 繁体中文) / Korean / Japanese

**D-NE241:** English / Chinese (Simplified Chinese) 中文 (简体中文)

**ICF-SW22:** English / Korean / Japanese

**Others:** English / Chinese (Simplified Chinese) 中文 (简体中文) / Korean / Japanese

Availability is limited to model in stock. For information about the prices of "Open Price" products, please contact your nearest Sony product retailer. 产品的供应因各型号产品库存情况而异。如需了解关于"Open Price(价格未定)"产品的价格信息, 请就近向索尼产品零售商联系咨询。

Digital Camcorder Specifications 数码摄像机规格

Model Name 机型名称		HDR-CX700E(JE)  P6	HDR-CX560E(JE)  P7	HDR-CX160E(JE)  P7	HDR-PJ50E(JE)  P8	HDR-PJ30E(JE)  P8	HDR-PJ10E(JE)  P9	HDR-TD10E(JE)  P10			
		High-Definition [1920 x 1080]			High-Definition [1920 x 1080]						
		Internal Memory / "Memory Stick" / SD Memory Card			HDD / "Memory Stick" / SD Memory Card		Internal Memory / "Memory Stick" / SD Memory Card				
<b>Image Sensor (Approx.)</b> 影像传感器 (约)	<b>Image Sensor</b> 影像传感器	1/2.88 Type "Exmor R" CMOS Sensor		1/4 Type "Exmor R" CMOS Sensor		1/4 Type "Exmor R" CMOS Sensor		2x 1/4 Type "Exmor R" CMOS Sensor			
	<b>Number of pixels</b> 像素数	MAX. 12.3 Megapixels		MAX. 3.3 Megapixels		MAX. 7.1 Megapixels		MAX. 7.1 Megapixels			
	<b>Gross pixels</b> 总像素	6,650K pixels		4,200K pixels		4,200K pixels		2x 4,200K pixels (3D) / 4,200K pixels (2D)			
	<b>Effective pixels of moving pictures</b> 动态影像有效像素	6,140K pixels (16:9) / 4,600K pixels (4:3)		1,490K pixels (16:9) / 1,120K pixels (4:3)		2,650K pixels (16:9) / 1,990K pixels (4:3)		3D HD: 2x 1,990K pixels (16:9) / 2D HD, STD: 2,650K pixels (16:9), 1,990K pixels (4:3)			
	<b>Effective pixels of still images</b> 静态影像有效像素	6,140K pixels (16:9)		1,670K pixels (4:3)		3,540K pixels (4:3)		3D: 2x 3,540K pixels (4:3) / 2D: 3,540K pixels (4:3)			
<b>Lens</b> 镜头	<b>Lens</b> 镜头	"G Lens"		"G Lens"		"G Lens"		"G Lens"			
	<b>Zoom</b> 变焦	Optical 10x (Digital 120x*1), Extended 14x		Optical 30x (Digital 350x*1), Extended 42x		Optical 12x (Digital 160x*1), Extended 17x		Optical 30x (Digital 350x*1), Extended 42x			
	<b>in "Movie" position</b> 处于"Movie"位置	Optical 10x		Optical 30x		Optical 12x		Optical 30x			
	<b>in "Photo" position</b> 处于"Photo"位置	Optical 10x		Optical 30x		Optical 12x		Optical 12x			
	<b>Focus System</b> 对焦系统	Full range auto / Manual		Full range auto / Manual		Full range auto / Manual		Full range auto / Manual			
	<b>F F</b>	F1.8-3.4		F1.8-3.4		F1.8-3.4		F1.8-3.4			
	<b>f (Focal distance)</b> f (焦距)	f=3.8-38.0mm		f=2.1-63mm		f=2.9-34.8mm		f=2.1-63mm			
<b>f (35mm conversion)</b> f (35mm转换)	<b>in "Movie" position</b> 处于"Movie"位置	f=26.3-263mm (16:9) / 32.2-322mm (4:3)		f=29.8-894mm (16:9) / 36.5-1,095mm (4:3)		f=29.8-357.6mm (16:9) / 36.5-438mm (4:3)		3D: f=34.4-344mm / 2D: f=29.8-357.6mm (16:9), 36.5-438mm (4:3)			
	<b>in "Photo" position</b> 处于"Photo"位置	f=26.3-263mm (16:9) / 32.2-322mm (4:3)		f=32.5-975mm (16:9) / 29.8-894mm (4:3)		f=29.8-357.6mm (16:9) / 27.4-328.8mm (4:3)		f=29.8-357.6mm (16:9) / 27.4-328.8mm (4:3)			
<b>Filter Diameter</b> 滤镜直径	37mm		37mm		30mm		37mm				
<b>Viewfinder/Monitor</b> 取景器/显示屏	<b>Viewfinder</b> 取景器	0.2 type (4:3) 201,600 dots		—		—		—			
	<b>LCD Screen</b> 液晶屏	3.0 type (16:9) 921,600 dots		3.0 type (16:9) 921,600 dots		3.0 type (16:9) 230,400 dots		3.0 type (16:9) 230,400 dots			
<b>Projector</b> 投影机	<b>Light Output</b> 光输出	—		—		Up to 10 lumen		Up to 10 lumen			
<b>Camera</b> 相机	<b>Minimum Illumination (without Nightshot)</b> 最低亮度 (不含夜摄)	STD: 11lux*2 / LOW LUX: 3lux*3 / Night shot: 0lux*2		STD: 11lux*2 / LOW LUX: 3lux*3 / Night shot: 0lux*2		STD: 11lux*2 / LOW LUX: 3lux*3		STD: 11lux*2 / LOW LUX: 3lux*3			
	<b>SteadyShot</b> 防抖功能	Optical SteadyShot (Active Mode)*4		Optical SteadyShot (Active Mode)*4		Optical SteadyShot (Active Mode)*4		Optical SteadyShot (Active Mode)*4			
	<b>White Balance</b> 白平衡	Auto / Outdoor / Indoor / Onepush		Auto / Outdoor / Indoor / Onepush		Auto / Outdoor / Indoor / Onepush		Auto / Outdoor / Indoor / Onepush			
	<b>Backlight Compensation (Auto / Button)</b> 背光补偿 (自动/按键)	● (Auto)		● (Auto)		● (Auto)		● (Auto)			
<b>Recorder / Player</b> 录像机/播放机	<b>Recording Media</b> 录制媒体	Internal Memory / "Memory Stick PRO Duo" (MARK2) / "Memory Stick PRO-HG Duo" / SD / SDHC / SDXC Memory Card*5		Internal Memory / "Memory Stick PRO Duo" (MARK2) / "Memory Stick PRO-HG Duo" / SD / SDHC / SDXC Memory Card*5		HDD / "Memory Stick PRO Duo" (MARK2) / "Memory Stick PRO-HG Duo" / SD / SDHC / SDXC Memory Card*5		Internal Memory / "Memory Stick PRO Duo" (MARK2) / "Memory Stick PRO-HG Duo" / SD / SDHC / SDXC Memory Card*5			
	<b>HDD Capacity</b> 硬盘容量	—		—		220GB		—			
	<b>Internal Memory Capacity</b> 内存容量	96GB		64GB		—		16GB			
	<b>Movie Recording Format</b> 动态影像录制格式	HD: MPEG4-AVC/H.264 (AVCHD) / SD: MPEG2-PS		HD: MPEG4-AVC/H.264 (AVCHD) / SD: MPEG2-PS		HD: MPEG4-AVC/H.264 (AVCHD) / SD: MPEG2-PS		HD: MPEG4-AVC/H.264 (AVCHD) / SD: MPEG2-PS			
	<b>Progressive Mode(HD)</b> 逐行扫描模式 (HD)	50p / 25p		CX560: 60p / 24p, CX560E: 50p / 25p		50p / 25p		50p			
	<b>Audio Compression Format</b> 音频压缩格式	Dolby Digital 5.1ch / Dolby Digital 2ch		Dolby Digital 5.1ch / Dolby Digital 2ch		Dolby Digital 5.1ch / Dolby Digital 2ch		Dolby Digital 5.1ch / Dolby Digital 2ch			
	<b>Built-in Zoom Microphone</b> 内置变焦麦克风	●		●		●		●			
	<b>Speaker</b> 扬声器	Clear Phase Stereo Speaker		Clear Phase Stereo Speaker		Clear Phase Stereo Speaker		Clear Phase Stereo Speaker			
	<b>Wind Position</b> 风位	● (Auto)		● (Auto)		● (Auto)		● (Auto)			
	<b>Wind Noise Reduction</b> 风声降噪	● (Off / On)		● (Off / On)		● (Off / On)		● (Off / On)			
<b>Mic Level Control</b> 麦克风电平控制	● (2steps)		● (2steps)		● (2steps)		● (2steps)				
<b>Still Picture</b> 静态图像	<b>Image Size (Approx.)</b> 图像尺寸 (约)	Photo Mode 照片模式 12.3M (4,672 x 2,628) / 16:9 9.2M (3,504 x 2,628) / 4:3 3.3M (2,112 x 1,584) / 4:3 0.3M (640 x 480) / 4:3		12.3M (4,672 x 2,628) / 16:9 9.2M (3,504 x 2,628) / 4:3 3.3M (2,112 x 1,584) / 4:3 0.3M (640 x 480) / 4:3		3.3M (2,112 x 1,584) / 4:3 2.5M (1,728 x 1,296) / 4:3 1.9M (1,600 x 1,200) / 4:3 0.3M (640 x 480) / 4:3		7.1M (3,072 x 2,304) / 4:3 5.3M (3,072 x 1,728) / 16:9 1.9M (1,600 x 1,200) / 4:3 0.3M (640 x 480) / 4:3		7.1M (3,072 x 2,304) / 4:3 5.3M (3,072 x 1,728) / 16:9 1.9M (1,600 x 1,200) / 4:3 0.3M (640 x 480) / 4:3	
	<b>Movie Mode</b> 动态影像模式	12.3M (4,672 x 2,628) / 16:9 9.2M (3,504 x 2,628) / 4:3		12.3M (4,672 x 2,628) / 16:9 9.2M (3,504 x 2,628) / 4:3		3.0M (2,304 x 1,296) / 16:9 2.2M (1,728 x 1,296) / 4:3		5.3M (3,072 x 1,728) / 16:9 4.0M (2,304 x 1,296) / 4:3		3.0M (2,304 x 1,296) / 16:9 2.2M (1,728 x 1,296) / 4:3	
	<b>Photo Capture from Playback Movie</b> 从回放动态影像中截取照片	2.1M (1,920 x 1,080) / 16:9 0.3M (640 x 480) / 4:3 0.2M (640 x 360) / 16:9		2.1M (1,920 x 1,080) / 16:9 0.3M (640 x 480) / 4:3 0.2M (640 x 360) / 16:9		2.1M (1,920 x 1,080) / 16:9 0.3M (640 x 480) / 4:3 0.2M (640 x 360) / 16:9		2.1M (1,920 x 1,080) / 16:9 0.3M (640 x 480) / 4:3 0.2M (640 x 360) / 16:9		2.1M (1,920 x 1,080) / 16:9 0.3M (640 x 480) / 4:3 0.2M (640 x 360) / 16:9	
	<b>Flash</b> 闪光	●		●		—		●		●	
	<b>Jack</b> 插孔	<b>A/V Remote Terminal</b> A/V 遥控端子	Video / S Video / Audio / Component Out / Remote		Video / S Video / Audio / Component Out / Remote		Video / S Video / Audio / Component Out / Remote		Video / S Video / Audio / Component Out / Remote		
<b>Mic. Input</b> 麦克风输入	●		●		●		●		●		
<b>Phone Jack</b> 耳机插孔	●		●		●		●		●		
<b>USB Port</b> USB端口	● (mini AB / Hi-Speed)		● (mini AB / Hi-Speed)		● (mini AB / Hi-Speed)		● (mini AB / Hi-Speed)		● (mini AB / Hi-Speed)		
<b>HDMI Terminal</b> HDMI高清多媒体接口	● (mini)		● (mini)		● (mini)		● (mini)		● (mini)		
<b>DC IN</b> DC IN (直流电源输入) 端口	●		●		●		●		●		
<b>Other</b> 其他	<b>Active Interface Shoe</b> 有源接口靴	●		—		●		—		●	
	<b>Power Requirements</b> 电源要求	AC adaptor 8.4V / Battery 7.2V		AC adaptor 8.4V / Battery 7.2V		AC adaptor 8.4V / Battery 7.2V		AC adaptor 8.4V / Battery 7.2V		AC adaptor 8.4V / Battery 7.2V	
	<b>Power Consumption (Recording mode / Recording media : Default Setting) (Approx.)</b> 功耗 (录制模式/录制媒体: 默认设置) (约)	3.0W		CX560: 3.2W / CX560E: 3.0W		3.7W		3.0W		2.6W	
	<b>Dimension (WxHxD) (including supplied battery) (Approx.)</b> 尺寸 (宽x高x深) (包括随机电池) (约)	62 x 73 x 139 mm		62 x 67 x 126 mm		53 x 57 x 114 mm		64 x 66 x 118 mm		59 x 65 x 117 mm	
	<b>Mass (without Recording Media, Battery, etc.) (Approx.)</b> 重量 (不含录制媒体、电池等) (约)	395g		385g		250g		400g		310g	
	<b>Mass (with Battery) (Approx.)</b> 重量 (含电池) (约)	445g (Supplied NP-FV50)		435g (Supplied NP-FV50)		300g (Supplied NP-FV50)		450g (Supplied NP-FV50)		385g (Supplied NP-FV50)	
<b>Supplied Accessories</b> 随机配件	AC adaptor, Rechargeable Battery Pack (NP-FV50), Remote Commander, Component A / V Cable, A / V Connecting Cable, Application Software (CD-ROM), USB Connection Support Cable, Lens Hood		AC adaptor, Rechargeable Battery Pack (NP-FV50), Remote Commander, Component A / V Cable, A / V Connecting Cable, Application Software (CD-ROM), USB Connection Support Cable		AC adaptor, Rechargeable Battery Pack (NP-FV50), Component A / V Cable, A / V Connecting Cable, Application Software (CD-ROM), USB Connection Support Cable		AC adaptor, Rechargeable Battery Pack (NP-FV50), Remote Commander, Component A / V Cable, A / V Connecting Cable, Application Software (CD-ROM), USB Connection Support Cable		AC adaptor, Rechargeable Battery Pack (NP-FV50), Remote Commander, Component A / V Cable, A / V Connecting Cable, Application Software (CD-ROM), USB Connection Support Cable		



Digital Camcorder Specifications 数码摄像机规格

Table with columns for Model Name, Image Sensor, Lens, Media, Recording system, White balance modes, Shutter speeds, Gain, LCD monitor, EVF monitor, Interface, Compatible OS, Audio, Power, Mass, Dimension, and Supplied Accessories.

Digital Still Camera Specifications 数码相机规格

Table with columns for Model Name, Lens, Image Sensor, Camera, Light Metering Mode, ISO Sensitivity, SteadyShot, Focus Mode, White Balance Mode, Flash Range, Burst Speed, Shooting Mode, Monitor, Viewfinder, Recording Media, Internal Memory, File Format, Image File Format, Movie Recording Mode, Battery life, When shooting still images, When shooting movies, Print, Interface, Video Out Mode, Power Source, USB Charge, Dimensions, Mass, and Supplied Accessories.

\*1 Class 4 or higher. Class 4或更高。 \*2 Still Image only. 仅限静态图像。 \*3 DCF (Design rule for Camera File System) \*4 DPOF (Digital Print Order Format) \*5 Movies and still images recorded with this camera can be output by TV that supports PAL System. 支持PAL制式的电视可输出本相机拍摄的动态影像和静态图像。 \*6 The maximum length of time you can shoot continuously is approx. 29 minutes. The size of a movie file is limited to approx. 2GB. 最长连续拍摄时间约为29分钟。动态影像档案大小上限约为2GB。

Digital Still Camera Recording Capacity:

Table showing recording capacity for different models and formats, including Still image (Units: Shots) and Movie (Approx. H:M:S).

Number of images recorded on a single media / Recording time of movies 数码相机记录能力:在单一媒体上记录的图像数量 / 动态影像的录制时长

Table showing the number of images recorded on a single media and recording time of movies for different models.



Digital Photo Frame Specifications 数码相框规格

Table with 6 columns for Model Name (e.g., DPF-VR100J/E), LCD Panel Size, Actual Viewing Area Size, LCD Panel Resolution, LCD Total Dot Number, Lifetime to 50% Brightness, Maximum Pixels Available to Decode, Internal Memory Capacity, Playback, Editing, Interface, Built-in Speaker, Compatible Photo Data Format, Compatible Video Data Format, Compatible Audio Data Format, Dimensions, Mass, and Supplied Accessories.

\*1 Storage volume is estimated using 2 Megapixels resolution images. Results may vary depending on actual photo size and conditions. ... \*4 Maximum file size for AVCHD video file is 2GB.

Digital Photo Frame Specifications 数码相框规格

Table with 2 columns for Model Name (DPP-F800J/E) and specifications including LCD Panel Size, Actual Viewing Area Size, LCD Panel Resolution, LCD Total Dot Number, Lifetime to 50% Brightness, Compatible Photo Data Format, Maximum Pixels Available to Decode, Internal Memory Capacity, Playback, Editing, Interface, Printing Technology, Image Processing Per Dot, Resolution, Print Size, Print Speed, Creative Print, Dimensions, Mass, Paper Tray Capacity, AC Adaptor, and Supplied Accessories.

\* Storage volume is estimated using 2 Megapixels resolution images. Results may vary depending on actual photo size and conditions. ... \*9 Print settings: [Borders] is set to [Borderless].

Mobile HD Snap Camera Specifications 便携式HD拍摄机规格

Table with 3 columns for Model Name (MHS-FS3J/E, MHS-TS20KJ/E) and specifications including Image Sensor, Still Image Number of recorded pixels, F-number, Focal Length, Number of Effective pixels, SteadyShot, White Balance Mode, Face Detection, Monitor, Recording Media, Movie Recording Format, Movie Recording Mode, Interface, Power, Battery life, USB charging, Dimensions, Mass, and Supplied Accessories.

Interchangeable Lens Digital Camera Specifications 数码微单相机 / 数码单电相机规格

Table with 4 columns for Model Name (NEX-7J/E, NEX-5NJ/E, NEX-C3J/E) and specifications including System, Image Sensor, Recording System, Image quality modes, Picture effect, Creative Style, Dynamic Range functions, Recording System, Media, Focus System, Finder, Monitor, Interface, Flash, Power, Mass, and Dimensions.

Table with 5 columns for Model Name (SLT-A77VJ/E, SLT-A65VJ/E, SLT-A35J/E) and specifications including System, Image Sensor, Recording System, Image quality modes, Picture effect, Creative Style, Dynamic Range functions, Recording System, Media, Focus System, Finder, Monitor, Interface, Flash, Power, Mass, and Dimensions.



# Broadcasting System

## 广播系统

The broadcasting system differs for each country and region.  
Please confirm the system used in your region

广播系统因国家和地区而异。请确认所在地区所使用的系统类型

Color system 彩色制式	■ / ▲	★
	PAL / SECAM	NTSC3.58
Channel system 频道系统	VHF VHF频段 W. & E. European / Moroccan / Chinese / Italian / French O.S.T. / South African / Irish CATV S1~S4, S1~S4 / Australian / New Zealand	★ American / Japanese / CATV A-8~W+84
	UHF UHF频段 European / U.K. / Australian / New Zealand	★ American / Japanese
Broadcasting system 广播系统	VHF VHF频段 B·I·D·K·K1	M
	UHF UHF频段 G·H·I·D·K	M
Power supply 电源	AC 110 to 240 V, 50/60 Hz	

※Not designed for use in Argentina, Brazil, Laos, France, Paraguay, Uruguay.  
不适用于阿根廷、巴西、老挝、法国、巴拉圭和乌拉圭等国家。

- The power supply situation and broadcasting system of each country may be changed without a preliminary announcement. You may obtain reconfirmation by yourself before purchase.
- The televisions listed in this catalog cannot be used in Argentina, Brazil, Laos, France, Paraguay or Uruguay. Please ask your Sony dealer for help when making your purchase.
- 每个国家的供电情况和广播系统均有可能在未事先通知的情况下发生变更。请在购买产品之前，自行重新确认。
- 本目录中所列电视机型号不适用于阿根廷、巴西、老挝、法国、巴拉圭和乌拉圭国家。在购买产品时，请向当地的索尼产品经销商咨询。

Country / Region 国家/地区	Voltage & frequency 电压与频率	Color system 彩色制式			Channel system 频道系统						Broadcasting system 广播系统			
		NTSC (3.58) NTSC 制式(3.58)	PAL PAL 制式	SECAM SECAM 制式	VHF VHF频段			UHF UHF频段			VHF VHF频段	UHF UHF频段		
					American 美洲	W.European 西欧	E.European 东欧	Others 其他	American 美洲	European 欧洲			Others 其他	
Japan	100/200V, 50/60Hz	★							Japanese				M	M
Argentina	220V, 50Hz		■			★							N	
Australia	240/250V, 50Hz		■						Australian				B	G
Austria	220/230V, 50Hz		■				■				■		B	G
Belgium	220/230V, 50Hz		■				■				■		B	H
Canada	120V, 60Hz	★				★				★			M	M
Canary Islands	127/220V, 50Hz		■				■				■		B	G
Chile	220V, 50Hz	★				★							M	
China	220V, 50Hz		■						Chinese				D	
Czech (Rep.)	220V, 50Hz			▲				▲				E. European	D	K
Denmark	220/230V, 50Hz		■				■				■		B	G
Finland	220/230V, 50Hz		■				■				■		B	G
Germany	220/230V, 50Hz		■				■				■		B	G
Greece	220/230V, 50Hz			▲			■				■		B	G
Hong Kong	220V, 50Hz		■								■			I
India	220/230V, 50Hz		■				■						B	
Indonesia	127/220V, 50Hz		■				■						B	
Iran	220/230V, 50Hz			▲			■						B	
Iraq	220V, 50Hz			▲			■						B	
Italy	220V, 50Hz		■						Italian				B	G
Kenya	240V, 50Hz		■				■						B	
Korea (D.P.R)	220V, 60Hz		■					▲					D	
Korea (Rep.)	110/220V, 60Hz	★				★				★			M	M
Malaysia	240V, 50Hz		■				■						B	
Mexico	120/220V, 60Hz	★				★				★			M	M
Netherlands	220/230V, 50Hz		■				■				■		B	G
New Caledonia	220V, 50Hz			▲					French O.S.T.				K1	
New Zealand	230/240V, 50Hz		■						New Zealand				B	G
Nigeria	230V, 50Hz		■				■				■		B	G
Norway	230V, 50Hz		■				■				■		B	G
Pakistan	220/230V, 50Hz		■				■						B	
Peru	220V, 60Hz	★				★				★			M	M
Philippines	230/240V, 60Hz	★				★							M	
Poland	220V, 50Hz		■									E. European	D	K
Portugal	220/230V, 50Hz		■				■				■		B	G
Russia	127/220V, 50Hz			▲				▲				E. European	D	K
Saudi Arabia	127/220V, 60Hz			▲			■				■		B	G
Singapore	230V, 50Hz		■				■						B	
South Africa	220/230/250V, 50Hz		■						South African				I	I
Spain	127/220/230V, 50Hz		■				■				■		B	G
Sweden	220/230V, 50Hz		■				■				■		B	G
Switzerland	220/230V, 50Hz		■				■				■		B	G
Taiwan	110V, 60Hz	★				★							M	
Thailand	220V, 50Hz		■				■						B	
Turkey	220V, 50Hz		■				■				■		B	G
U.K.	240V, 50Hz		■								■			I
U.S.A.	120V, 60Hz	★				★				★			M	M

Visit Sony Overseas Models Website 访问索尼海外规格产品网站

[sony.jp/overseas/](http://sony.jp/overseas/)

### Safety Cautions 安全注意事项

To ensure correct use of this product, read the "Instruction Manual" prior to use. Failure to follow all safeguards can result in fire, electric shock, or other accidents. Do not use headphones while driving and cycling, etc.  
为确保正确使用本产品，使用前请仔细阅读“使用说明书”。如果未能遵守所有安全防护事项，可能会导致火灾、电击或其他事故的发生。在从事车辆驾驶或骑自行车等活动时，请勿使用耳机。

•Sony Corporation  
Sony Marketing (Japan) Inc.  
1-7-1 Konan Minato-ku, Tokyo, 108-0075 Japan

•Sony Customer Information Center Japan

◎ For information about how to purchase or use our products, and for other assistance, please call our Customer Hotline.

Free Dial 0120-777-886

(Toll-free number available only in Japan.  
Assistance available in Japanese language only.)

○ Mobile/PHS phone callers please dial 0466-31-2546

○ Service available

Mon. to Fri. .... 9:00-18:00

Sat., Sun. and Holidays ... 9:00-17:00

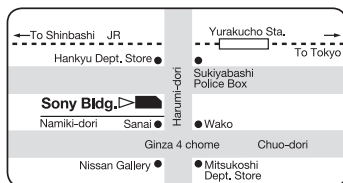
•Showroom 样品陈列室  
Tokyo: Sony Bldg., 3-1 Ginza 5-chome, Chuo-ku, (03)3573-2563  
东京都：中央区银座5丁目3-1 索尼大厦 (03)3573-2563

Come see the Showroom to find wide range of Sony products and selected items listed in this catalog.  
You can experience leading technology and design, all in one place.

欢迎莅临索尼样品陈列室，包括本目录精选产品在内。您可浏览更多、更丰富的索尼产品。在这里，足不出户，即可体验当今世界上最先进的科技和设计理念。

### Sony Showroom

Sony Building / Sukiyabashi,  
Ginza, Chuo-ku, Tokyo  
URL: [sonybuilding.jp/e/](http://sonybuilding.jp/e/)



- “SONY” and “make.believe” are trademarks of Sony Corporation.
- “Cyber-shot,” “Cyber-shot,” “Handycam,” “HANDYCAM,” “InfoLITHIUM,” “ActiFORCE,” “ActiFORCE,” “blogger,” “bloggie,” “360 Video lens,” “360,” “Walkman,” “WALKMAN,” “WALKMAN” are registered trademarks of Sony Corporation.
- “G Lens,” “G,” “Exmor,” “Exmor R,” “BIONZ,” “BRAVIA,” “Memory Stick,” “Memory Stick Duo,” “Memory Stick PRO,” “Memory Stick PRO Duo,” “Memory Stick PRO-HG Duo,” “Memory Stick Micro,” “MEMORY STICK Duo,” “MEMORY STICK PRO,” “MEMORY STICK PRO Duo,” “MEMORY STICK PRO-HG Duo,” “MagicGate” and “MAGIC GATE” are trademarks of Sony Corporation.
- “AVCHD” and “AVCHD” are trademarks of Panasonic Corporation and Sony Corporation.
- HDMI, “HDMI” and High-Definition Multimedia Interface are trademarks or registered trademarks of HDMI Licensing LLC.
- Microsoft, Windows, Windows Vista, Windows Media are trademarks or registered trademarks of Microsoft Corporation.
- Macintosh, Mac OS, the Mac OS logo, iMac, iBook, PowerBook, Power Mac and eMac are trademarks or registered trademarks of Apple Inc.
- iTunes is a registered trademark of Apple Inc.
- Pentium is a registered trademark of Intel Corporation.
- The Bluetooth word mark, figure mark, and combination mark are all trademarks that are owned by the Bluetooth SIG and licensed out for use to companies that are incorporating Bluetooth wireless technology into their products.
- “YouTube” and Picasa are trademarks of Google Inc.
- Facebook is a trademark of Facebook, Inc.
- SD and SDHC Logo are trademarks of SD-3C, LLC.
- SWAROVSKI® is a registered trademark of SWAROVSKI AG.
- All other product and company names are trademarks or registered trademarks of their respective companies.

- Availability is limited to model in stock. 产品的供应因各型号产品库存情况而异。
- Design and specifications are subject to change without notice. 产品设计及参数可能会发生变更，恕不事先通知。
- M.S.R.P.: Manufacture's Suggested Retail Price. M.S.R.P.: 制造商建议零售价。

Contents of this catalog are valid as of August 2011