



IMZ-RS301/304/309/316/332
V3.3.1 Release Note 1st Edition

Last Modified Date: July 11, 2006

Copyright Notice

©2006 Sony Corporation. All rights reserved. This document may not be reproduced, translated or reduced to any machine readable form in whole or in part, without prior written approval from Sony Corporation. SONY CORPORATION PROVIDES NO WARRANTY WITH REGARD TO THIS DOCUMENT OR INFORMATION CONTAINED HEREIN AND HEREBY EXPRESSLY DISCLAIMS ANY IMPLIED WARRANTIES OF MERCHANTABILITY OR FITNESS FOR ANY PARTICULAR PURPOSE WITH REGARD TO THIS DOCUMENT OR SUCH INFORMATION. IN NO EVENT SHALL SONY CORPORATION BE LIABLE FOR ANY INCIDENTAL, CONSEQUENTIAL OR SPECIAL DAMAGES, WHETHER BASED ON TORT, CONTRACT, OR OTHERWISE, ARISING OUT OF OR IN CONNECTION WITH THIS DOCUMENT OR INFORMATION CONTAINED HEREIN OR THE USE THEREOF. Sony Corporation reserves the right to make any modification to this document or the information contained herein at any time without notice.

Trademarks

Microsoft and Windows are registered trademarks of Microsoft Corporation.
Intel and Pentium are registered trademarks of Intel Corporation.
Java and all Java-based marks are trademarks or registered trademarks of Sun Microsystems, Inc.

Please refer to Copyright.pdf of Copyright directory about others.

Moreover, all other brands and product names are trademarks or registered trademarks of their respective owners.

Please be aware that the software used in the Product includes a part of software under the different terms and conditions from the “TERMS OF GRANT OF SOFTWARE LICENSE”. You can confirm such software at the following URL (hereinafter referred to as “Exceptional Software”). The “TERMS OF GRANT OF SOFTWARE LICENSE” does not apply to such Exceptional Software and the respective terms and conditions apply to each Exceptional Software separately from the “TERMS OF GRANT OF SOFTWARE LICENSE”. Exceptional Software shall never be construed as Program defined in the “TERMS OF GRANT OF SOFTWARE LICENSE”.

URL: http://www.sony.co.jp/Products/RSM/RSM_acknowledgements.html

1. Introduction

1.1. Main Features from version1

A) Customized layouts

Intuitive and use-friendly interface can be personalized in order to match your own requirements and preferences.

This powerful feature creates customized site layouts and allows you to insert backgrounds (e.g. a floor plan or map), icons (which can be linked to a specific camera or monitor) and even company logos.

B) Various recording functions

Flexible recording modes, which include Manual, Scheduled and Alarm/Pre-alarm/Post-alarm recording.

The Alarm/Pre-alarm/Post-alarm recording is triggered by external sensor input.

C) Number of camera connections

No limitation on software.

Please note that it may not achieve desired frame rate by the number of connected camera, resolution of image and specification of PC, which you use.

If you want to monitor image as VGA size and 10fps, we recommend the number of camera up to 32, which connect to 1PC.

Please refer the following about the circumstance, which is confirmed in our site.

D) Maximum receivable rate

200Mbps can record 30fps of VGA sized images from 32cameras at the same time (using Giga-bit Ethernet).

E) Controllable equipments

Sony SNC-RZ30/SNC-VL10/SNT-V304/SNC-Z20/SNC-CS3

F) Functions

Pan/Tilt/Zoom control

Up to 16-postion preset including 12 direct preset call

Digital zoom

Image rotation, specified image size and image quality

Scheduled recording (per minimum 1 minute)

Alarm Recording including Pre or Post Alarm Recording available

Playback during recording

Variable-speed playback from Field-by-Field to 100 times

Simultaneous recording and playback; available to playback images in recording

Action function such as control button on the screen or camera switching

User privilege setting

Switching the display automatically

Log function

Relay-out control

G) Support of SNC-Z20 camera

A new network camera SNC-Z20 is now available.

This camera has Zoom lens and it is available to Zoom-in/Zoom-out after installation of the camera.

H) More than one piece of specification of the record place folder

The record place folder becomes able to be specified every record contents of the manual record, the general record and the alarm record.

Also, the above contents can be specified by the folder every camera.

I) The extension with automatic clean-up feature

The automatic deletion feature works when becoming the time when setting the date and time specification (being one in the whole system) beforehand in the past and a file before the specified date was deleted.

The Automatic Deletion function will delete files created on and before specified value of a time or a date, which can be specified only one toward the whole system, when reached to the time or the date.

In addition to that, V1.60 will provide a new feature, which allows you to specify multiple schedules to execute the function above. Also, the record data (recording a manual record, a general record and an alarm) of the object to delete which starts up an automatic deletion feature according to the remainder capacity of the hard disk can be specified beforehand.

J) Support of the Activity Detection feature of the SNC-RZ30/Z20/CS-3 camera

Using Activity Detection of SNC-RZ30/SNC-Z20/SNC-CS3, it becomes able to do an alarm record.

Also, the setting of Activity Detection can be set from this software, being remote.

K) The extension of Action feature

In the past, the action operation to display a camera at the camera monitor window, which changes laying-out when clicking an image and a camera, monitor window with the optional position mouse as the action feature could be specified.

In version 1.60, in addition to the conventional feature, it supports the following things without mouse operation.

- Laying-out change
- To display the camera at the camera monitor window
- To control the relay out of the camera
- To adjust the camera setting as the compression ratio, the frame rate, the

resolution

- To change a position of the presetting of a camera

L) The camera sharing feature

The camera, which each computer manages, becomes able to be shared among the personal computers.

M) The addition of the button to return to the live camera after playback.

In the past, it is necessary to set again the camera to the camera monitor window to return the live display after replaying the recording data.

In the version of 1.60, it is a simple operation which "returning to the camera display" button of the reply toolbar is pressed to return the before live display after replaying.

1.2. The additional features by version 2.0

In this new version, version 2.0, the following features have been added.

A) Separate Hot-Spot Window

When you use the “Dual Monitor” function of Microsoft Windows XP, you can use the second monitor as full screen “Hotspot” monitor. (The hotspot monitor displays the same picture as the currently selected camera monitor window.)

B) Adding “Controller” PCs to the system

The IMZ-RS200 series includes the IMZ-RS200C as a new line-up, which is an additional client (Controller) license. When you install the IMZ-RS200C to your second PC and connect it to your existing RSM system, the second PC works as the additional controller of the RealShot Manager.

As traditional Version 1, we call the RealShot Manager, which control all camera and monitor image from 1PC, “Standard system”

C) Adding “Viewer” PCs to the system

The IMZ-RS200V, which is a viewer (client) license, is also prepared as free software.

Since it is free of charge, “IMZ-RS200V” is not an official model name.

When you install the IMZ-RS200V to your second PC and connect it to your existing RSM system, the second PC works as the viewer of the RealShot Manager system

It is now available to download the Viewer above via Web page.

The viewer PC has the limited functions as follows:

- Live monitoring
- Play back
- Pan/tilt/zoom control
- Manual (emergency) recording on local HDD: 30 minutes maximum
- Layout can be customized, but only one layout is available.

The viewer PCs can be multiply added to the system.

D) Support RSM API

RealShot Manager supports API interface, which is HTTP protocol compliance, to cooperate with other system and software.

E) Flexible license line-up for more system scalability

The IMZ-RS200 series (RealShot Manager version 2) provides more flexibility for the users to choose the number of cameras in their systems than the former IMZ-RS100 series.

It allows the installation of more than 32 cameras, and also enables users to purchase the license that meets the exact number of cameras in their system, for example twenty cameras.

There are five camera license line-ups, and any combination of them can be simultaneously or cumulatively installed to your PC.

The combination of the IMZ-RS2XX and IMZ-RS2YY provides the usage of XX + YY cameras.

- IMZ-RS201: RSM software license for 1 IP networked image source
- IMZ-RS204: RSM software license for 4 IP networked image source
- IMZ-RS209: RSM software license for 9 IP networked image source
- IMZ-RS216: RSM software license for 16 IP networked image source
- IMZ-RS232: RSM software license for 32 IP networked image source

F) Privacy Masking capability

In order to protect the privacy, “Privacy Masking” of forbidden parts of images is newly added to RealShot Manager’s features.

The mask stays on the selected position of image even after panning, tilting or zooming the image. The number, position and size of masks can be flexibly configured, and the mask type can be selected from Border, Gaussian Blur, Luminance (gamma), Mosaic (average), Mosaic (duplicate), Random Noise and Single Colour.

G) Support easy Pan/Tilt/Zoom operation by mouse

The pan, tilt and zoom operation can be performed by using the mouse on the monitored image.

H) Audio Support

The RealShot Manager version 2.0 newly supports monitoring and recording audio signals at the same time as video recording. The audio boxes from a third party are required to record audio.

The product names of audio boxes are “Instreamer” and “Annunicom” manufactured by BARIX.

The product details and dealer information are available at <http://www.barix.com>.

I) Joysticks

The new RealShot Manager supports external joysticks to perform pan, tilt and zoom over USB.

J) PIO box support

Support detection of input signal from BARIX PIO box “BARIONET”. You can execute “Alarm Action” by alarm signal from some devices which connect to input bin of “BARIONET”, as trigger.

<http://www.barix.com>

K) Tour support

If you set Pan/Tilt/Zoom information corresponding to the multiple points in advance, you make the camera to routine run to these preset position by rotation.

L) Disk Quota support

You can set the disk quota value and the pre-warning watermark. By this

function, you can avoid the situation easily that you cannot continue recording by the Disk-full.

M) Support Server/Client structure

You can create RSM system by Server/Client structure using multiple PC. Using this functionality, you can monitor images, which come from multiple Servers, at 1 Client intensively, or you can share image come from Server with other Client. So, you can create flexible system from small system to large system.

1.3. The additional feature by version 2.1

In version 2.1, the following features have been added.

A) Alarm receiving via RSM API by Client

RSM Client and 3rd party application can acquire alarm now from RSM Server via API.

B) Send alarm from Client to Server via API

Alarm can be sent to RSM Server from 3rd party application via API.

C) Acquisition of the RSM Server record file via API

The record file stored in RSM Server via API is receivable.

D) Export to AVI file from RSM GUI

RSM record file can be directly exported to an AVI formal file from RSM GUI.

1.4. The additional feature by version 2.2

To this new version, version 2.2, the following features have been added.

A) Support of new device

SNT-V501 and SNT-V504 were supported newly.

B) Change of alarm monitoring window

At the time of alarm generating, the alarm window was displayed as a pop-up window. From RSM v2.2.0, alarm is displayed on a main screen.

C) User access information management

The history of the user who logged in to RSM is recorded on the user window and log file.

D) Playback of audio data

Audio data can be playback from RSM GUI.

E) Sending of the notice mail of alarm with image

The image file could be attached when E-mail notified alarm.

1.5. New functions in V2.3

In v2.3, the following functions are supported.

1. Support new devices

Support SNC-P1, SNC-DF40 newly.

Support JPEG mode only.

Not support alarm action for SNC-DF40.

2. “Layout tour” function

You can change multiple layouts in order by specified interval. You can monitor many cameras, which are assigned to multiple layouts, in one GUI by using this function.

3. Audio file Output to SNC-P1 function by alarm triggering

You can output prepared audio file to Audio Output of SNC-P1 by alarm input triggering. Supported formats of audio file are G711 and G726. Please add the following extension to each format.

RSM supports only raw data format, not supports other format file, such as WAVE file or MP3.

g.711 64 kbit/s Encoded Files (*.g64)

g.726 40 kbit/s Encoded Files (*.g40)

g.726 32 kbit/s Encoded Files (*.g32)

g.726 24 kbit/s Encoded Files (*.g24)

g.726 16 kbit/s Encoded Files (*.g16)

4. Support EZPlugger

Support easy setup tool “EZPlugger”, which allocates IP address to multiple cameras at same time. So far, you have to allocate IP address to IP camera directly and input these IP address to RSM, independently. From now, you input IP address only one time by using EZPlugger

Please note that EZPlugger does not support SNC-P1/SNC-DF40.

It is necessary to install it independently from RealShot Manager.

5. Integration with “Alarm notification by e-mail with Image” function

“Alarm notification by e-mail with Image” function can be started from RealShot Manager GUI. So far, you have to install and start it independently from RealShot Manager to use this function, but from now, it is not necessary.

6. Support trial mode to use full functions of RSM Standard for 30 days since initial installation

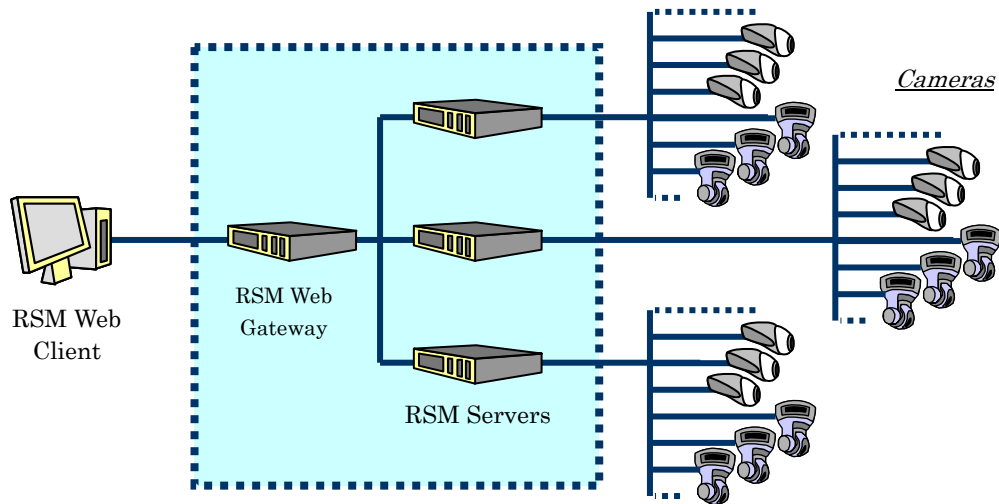
We support new trial mode to use full function of RSM Standard for 30days from initial installation without any license.

RSM Standard does not work after 30 days past even if you install it again. If you

install license file, it can be used, again.
Only RSM Standard edition supports trial mode.

7. Connection support by the Web client

By connecting with RSM Server via RSM Web Gateway, camera monitoring, camera control, and recorded data can be playback through web browser.



9. Image Compression Server

By composition with RSM Web Gateway, quality setup of a camera image and change of frame rate can be performed through Web client.

1.6. Additional Functionalities towards V3.0

1. Archive

Archiving of recordings recorded in cooperated with Sony's Hybrid Network File Servers is now available.

2. Motion Detection functionality by Software

Motion Detection functionality has been embedded in RealShot Manager itself as a part of its functionalities. This will improve precision of Alarm operation by the functionality at places, where are under some environmental conditions like noise by swing of trees, darkness in the night and/or so forth.

3. MPEG4 Stream handling

In addition to handling of JPEG Stream, which is already available in RealShot Manager, handling of MPEG4 Stream is now available. This will contribute to cost saving on using network facilities for monitoring with RealShot Manager at places, where not frequent movements will be expected.

4. Audio Inputs Monitoring

By using cameras, to which audio input functionality is implemented, it is now available to monitor, to record, and to playback audio inputs from the cameras.

5. New devices:

The following Sony made cameras are added to available camera list with RealShot Manager:

SNC-RZ25

SNC-RZ30/2

SNC-DF70

6. On the assignment of recording folders towards remote cameras

Random and individual assignment of recording folders towards remote cameras is now available.

7. New Evaluation Mode on RealShot Manager

In the previous Evaluation Mode, RealShot Manager will run with its full functionality for thirty (30) days after its first execution without valid license. Then the Evaluation Mode will reach its expiration.

Under the New Evaluation Mode, it is still available to run RealShot Manager with the limited functionality after the expiration.

8. Alarm action support for SNC-DF40

Alarm action for SNC-DF40 is supported

1.7. Additional Functionalities towards V3.0.1

1. IPELA Logo

IPELA Logo is displayed in splash window at installation and RealShot Manager start-up.

1.8. Additional Functionalities towards V3.1.0

(1) Support of SNC-P5

A Sony-made IP camera of SNC-P5 is supported.

(2) Support of SNT-V704

A Sony-made video server of SNT-V704 is supported

(3) Real time audio output for cameras with Audio out

It is now available to output audio data from a microphone on a PC, on which RSM is installed,

(4) SNC-P5 support in RSM Web Gateway

SNC-P5 IP camera of Sony make is now available to use in RSM Web Gateway v1.2.0.

(5) SNC-V704 support in RSM Web Gateway

SNC-V704 IP camera of Sony make is now available to use in RSM Web Gateway v1.2.0.

1.9. Additional Functions towards v3.1.1

(1) Support Multiple Language

It supports the following languages.

- English
- French
- German
- Italian
- Japanese
- Simplified Chinese

(2) Support SNC-RZ30 standard version of firmware (v2.12)

By v3.1.0, RealShot Manager only supported v2.05g, which is special version for RealShot Manager, but from v3.1.1 RealShot Manager supports Standard firmware of SNC-RZ30 (v2.12).

1.10. Additional Functions towards v3.1.2

- (1) Support Sony Network Surveillance Recorder version1 as Remote Server
It supports Sony Network Surveillance Recorder version1 as Remote Server of RealShot Manager.

1.11. Additional Functions towards v3.2.0

- (1) New device to be support
SNC-RX550 / SNC-CS50 / SNC-RZ50 are newly supported.
- (2) Support Object Detection function of cameras
Alarm Recording is now available by using Object Detection function for SNC-RX550 / CS50 / RZ50, and by using Activity Detection function for SNC-P1 / P5 / DF40 / DF70 / RZ25.
- (3) Alarm Recording function using recording function to local storages of cameras
Cameras have a function that stores an alarm into their local storages when the alarm occurred. Alarm recording is now available using the function. By the function, it is available to save network bandwidth, and to store high-quality recording without any influence from a network bandwidth. The function is available to use for the following cameras:

SNC-RX550 / CS50 / RZ50 / P1 / P5 / DF40 / DF70 / RZ25
- (4) Data Overwriting function
The function automatically deletes recorded files in a Storage Location folder, if necessary to retain remaining volume of the storage as specified size by a user.
- (5) System Alert function
The function notifies specified users that connection between a camera and RealShot manager has lost and that remaining disk capacity has become lower than specified size in Cleanup dialogue by E-mail.

1.12. Additional Functions towards v3.2.1

- (1) Playback speed control function by "Fast Forward" or "Rewind" button
The playback speed can be changed by clicking of "Fast Forward" button or "Rewind" button.
- (2) Function to automatically display recordings of a selected camera when "Search
When "Search Recordings" screen is opened while selecting a monitor window, to which a camera is being assigned, a recording list of the camera will be displayed on the screen.
- (3) Spanish handling
Displaying Spanish in RealShot Manager is now available.

1.13. Additional Functions towards v3.3.0

- (1) Support of new cameras
The SNC-CS10/ SNC-CS11, new network cameras, are now available.
- (2) Support of various functions of the SNT-V704
Activity detection and Field Mode are newly supported.
2 types of analogue cameras have been added to be supported.

1.14. Available Platform

[Support OS]

(RSM-Standard/RSM-Controller/RSM-Viewer/RSM File Player)

Microsoft Windows XP Professional (except x64 edition)

Microsoft Windows Server 2003 (except x64 edition)

Microsoft Windows 2000 Server

Microsoft Windows 2000 Professional

(*) When RealShot Manager is running on Microsoft Windows XP Service Pack2 or Microsoft Windows server 2003 Service Pack1, it might become not to be able to connect other network device after some connection error happens over predefined times. It is caused by the specification of these OS. About detail information of this, please refer the following URL:

<http://www.microsoft.com/technet/prodtechnol/winxppro/maintain/sp2netwk.mspx>
"Limited number of simultaneous incomplete outbound TCP connection attempts"

(*) It is required that the setting regarding firewall for a server shall approve connection to RealShot Manager.exe in case that RealShot Manager installed under Microsoft Windows XP Service Pack2 or Microsoft Windows Server 2003 Service Pack1 will be used as the server of RSM Controller / RSM Viewer / RSM Web Gateway:

(*) In the case of Server OS, such as Microsoft Windows 2000 Server and Microsoft Windows Server 2003, processing for background jobs are prioritized than application programs with initial setting of OS, so performance of RealShot Manager might be more reduced than the case of using Microsoft Windows XP. In this case, it might be improved by tuning up or changing setup for OS, etc.

[RSM Web Gateway/RSM Compressor]

Microsoft Windows XP Professional (except x64 edition)

Microsoft Windows 2000 Server

Microsoft Windows 2000 Professional

[Recommended PC]

We have verified that IMZ-RS301/304/309/316/332 works normally using following PC.

<IMZ-RS301/IMZ-RS304>

Product name: Dell Optiplex GX260

CPU: Pentium 4 2.5GHz

Memory: 512GB

HDD: 40GB ATA drive

Network: Intel Pro 1000MT

Product name: FSV-IPM1

CPU: Pentium 4 2.4GHz

Memory: 512GB
HDD: 250GB Hitachi Deskstar HDS722525VLAT80
Network: Intel Pro 1000MT

<IMZ-RS309>

Product name: Dell Optiplex GX260
CPU: Pentium 4 2.5GHz
Memory: 512GB
HDD: 40GB ATA drive
Network: Intel Pro 1000MT

Product name: FSV-IPM1
CPU: Pentium 4 2.4GHz
Memory: 512GB
HDD: 250GB Hitachi Deskstar HDS722525VLAT80
Network: Intel Pro 1000MT

Product name: Dell Precision450
CPU: Xeon 2GHz * 2
Memory: DDR-SDRAM 1GB
HDD: 146GB Ultra320/m * 3 (Hardware RAID-1)
Network: Intel PRO 1000MT(10/100/1000)

Product name: Dell PE1420 Xeon HT
CPU: Xeon 2.8GHz * 2
Memory: DDR2 SDRAM 2GB
HDD: 320GB (4 * 80GB Ultra320SCSI Hardware RAID-0)
Network: Intel PRO 1000MT(10/100/1000)

<IMZ-RS316>

Product name: Dell Precision450
CPU: Xeon 2GHz * 2
Memory: DDR-SDRAM 1GB
HDD: 146GB Ultra320/m * 3 (Hardware RAID-1)
Network: Intel PRO 1000MT(10/100/1000)

Product name: Dell PE1420 Xeon HT
CPU: Xeon 2.8GHz * 2
Memory: DDR2 SDRAM 2GB
HDD: 320GB (4 * 80GB Ultra320SCSI Hardware RAID-0)
Network: Intel PRO 1000MT(10/100/1000)

<IMZ-RS332>

Product name: Dell PowerEdge2600
CPU: Xeon 2GHz * 2
Memory: DDR-SDRAM 1GB
HDD: 146GB Ultra320/m * 3 (Hardware RAID-5)

Network: Intel PRO 1000XT

Product name: Dell PE1420 Xeon HT

CPU: Xeon 2.8GHz * 2

Memory: DDR2 SDRAM 2GB

HDD: 320GB (4 * 80GB Ultra320SCSI Hardware RAID-0)

Network: Intel PRO 1000MT(10/100/1000)

<CPU>

- Only Intel-made CPUs are available for RealShot Manager.
- Dual Core CPUs are not available for RealShot Manager.

<Video Card>

1024 x 768 pixel (16/24 bit color or higher)

Moreover, required PC spec. Of RSM Web Gateway and Compression Server is as follows.

CPU: Intel Pentium4/2.0GHz or equivalent

- Only Intel-made CPUs are available for RealShot Manager.
- Dual Core CPUs are not available for RealShot Manager.

RAM: 512 MB Minimum

HDD: 500 MB and more Spare Capacity

OS: Microsoft Windows XP Professional (except x64 edition)

Microsoft Windows 2000 Server

Microsoft Windows 2000 Professional

JavaJRE: v1.4.2-03 (it is included installer of RSM Web Gateway. Please don't use other version)

() Web Browser:** Microsoft Internet Explorer Version 6.0 or later

[The version of RSM Web Gateway, to which check of its operation was performed by RSM version 3.3.0]

Version 1.2.0

[Support Camera Information (firmware version information)]

We executed QA test for RealShot Manager v3.3.0 using the following firmware version for each camera.

SNC-RZ30 (v2.14 or higher)

SNC-Z20 (v1.02 or higher)

SNC-VL10N (NTSC/v1.4.10 or higher)

SNC-VL10P (PAL/v1.4.2 or higher)

SNC-CS3 (v1.04 or higher)

SNC-P1 (v1.11 or higher)

SNC-DF40 (v1.11 or higher)

SNC-DF70 (v1.11 or higher)
SNC-RZ25 (v1.11 or higher)
SNC-RZ30/2 (v3.03 or higher)
SNC-P5 (v1.11 or higher)
SNC-RX550 (v1.11 or higher)
SNC-CS50 (v1.11 or higher)
SNC-RZ50 (v1.10 or higher)
SNC-CS10 (v1.00 or higher)
SNC-CS11 (v1.00 or higher)
SNT-V304 (v2.31 or higher)
SNT-V501 (v2.06 or higher)
SNT-V504 (v2.03 or higher)
SNC-V704 (v2.000 or higher)

(All devices above is Sony product)

(As for the version, please refer to item #92 in “3. Notice about specification of RealShot Manager”.)

[Sony Hybrid Network Fileserver supported in Archive function of RealShot Manager]

Version 1.30

1.15. Important Notice

1. Error messages which might be displayed when virus scanning are running

The following messages might be displayed when virus scanning is running by Anti-virus software.

- “Error File Recorder (C11 (<Camera model name>)) File Port Send: Timeout during Wait”
- “Error File Recorder (C11(<Camera model name>)) File Port Flush: Couldn't flush <xxxxxx>bytes to file <store path-name>”
- “Error File Recorder (C11 (<Camera model name>)) File Port Send: Timeout during Wait”
- “Error File Recorder (C11 (<Camera model name>)) File Port Flush: Couldn't flush <xxxxxx>bytes to file <store path-name>”
- “Error Ring Buffer Add: Had to remove locked data for C7 (<Camera model name>)”

Those are the messages, which are displayed under the condition that RealShot Manager can't record by same fps, which is the value when RealShot Manager was received from camera. It is caused by the situation such as connected many camera, network traffic problem, low I/O speed of Disk, other application running, or overload of CPU, and so on.

Recorded file under this situation is lacking of some image frame, but you can playback it.

To avoid this situation, you should make schedule RSM recording and Virus checking not to run simultaneously.

2. Minimum storage capacity to remain recorded file after Cleanup

RealShot Manager has Cleanup function which deletes recorded file, which was recorded before specified day. In this function, minimum unit, which you can specify, is “day”. It means that you have no recorded data after cleanup job if you don't have enough capacity of disk for more than 1 day. Because “Disk Full” situation happens within 1 day under this condition and you must specify 0 day to solve this situation in cleanup job.

To avoid this, storage capacity to store for more than 1day is required.

If you want to keep recorded data for more than 1 day, you should prepare storage capacity more than 2days at minimum case.

When you select HDD which images from camera are stored in, please consider the above mentioned.

You can calculate recorded image size using the following formula.

(1 image size * Frame/sec * total time * number of camera)

For example, if you have 2 cameras, which are using to record VGA size with compression level 5 and 30fps for 24H, you can calculate total size of recorded image as followings:

$30(\text{KByte}) * 30(\text{fps}) * (60 * 60 * 24) * 2 = 15.5\text{GByte}$

It is absolutely approximate calculation; it will change depend upon place and situation where images will be recorded.

3. About User Guide

User Guide of RealShot Manager is not included this RealShot Manager Installation Archive. Please download it from the below URL.

http://www.sony.co.jp/Products/RSM/UserGuides32_CS.zip (Simple Chinese Edition)

http://www.sony.co.jp/Products/RSM/UserGuides32_DE.zip (German Edition)

http://www.sony.co.jp/Products/RSM/UserGuides32_EN.zip (English Edition)

http://www.sony.co.jp/Products/RSM/UserGuides32_FR.zip (French Edition)

http://www.sony.co.jp/Products/RSM/UserGuides32_IT.zip (Italian Edition)

http://www.sony.co.jp/Products/RSM/UserGuides32_JP.zip (Japanese Edition)

http://www.sony.co.jp/Products/RSM/UserGuides32_SP.zip (Spanish Edition)

If you decode this User Guide Archive under the folder, which RealShot Manager Installation Archive is decoded under, User Guide is installed when RealShot Manager is installed.

If User Guide is downloaded after RealShot Manager Installation, please put it under RealShot Manager Installation folder, as the name of 'RealShot Manager User and Administrator Guide.pdf'.

4. About RSM software version

When multiple RSMs are combined as Server/Client system in one system, these RSMs should have same version about top 3digits. 4th digit is internal version only used to manage within design group, so it is not necessary to be same.

(Example of right combination)

RSM Standard v3.0.0.15/RSM Controller v3.0.0.13

Top 3 digits are same, "v3.0.0", so this is right combination.

(Example of not good combination)

RSM Standard v3.0.0.15/RSM Controller v2.3.1.36

Top 3 digits are different, "v3.0.0" and "v2.3.1", so it is not good combination.

Moreover, when using it with Server-Client type composition from RSM v2.2, user authentication is performed at the time of connection with server.

Please note that **any application using RSM API of v2.1 or before can't connect RSM v2.2 or higher.**

5. The program update (in case of upgrading)

First, confirm that the RealShot Manager software isn't running at present before installation.

And install by according to the procedure explained in User Guide.

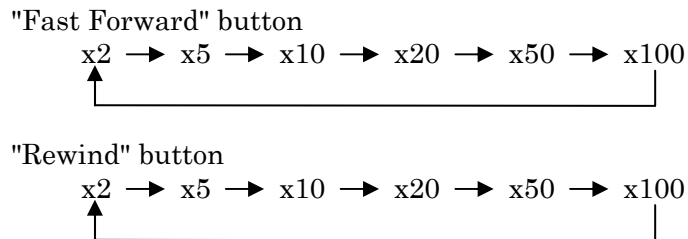
The following items are kept when it is upgrade.

- The camera setting
- The laying-out setting
- The schedule setting
- The record data
- The user information
- The I/O management information
- History of Alarm occurrence

1.16. Additional functions of v3.2.1

1. Playback speed control function by "Fast Forward" button or "Rewind" button

The playback speed can be changed by clicking of "Fast Forward" button or "Rewind" button.



2. Function to automatically display recordings of a selected camera when "Search Recordings" screen opened

When "Search Recordings" screen is opened while selecting a monitor window, to which a camera is being assigned, a recording list of the camera will be displayed on the screen. When the screen is opened without selecting any monitor window, e.g., by clicking a gap of the monitor windows, a recording list of a camera previously selected will appear on the screen.

1.17. Additional functions of v3.3.0

1. Support Video Motion Detection (Activity Detection) of the SNT-V704

As Video Motion Detection function of other cameras, Setting screen can be opened by Video Motion Detection (Activity Detection) pin in an I/O box.

One I/O box is used for one Video Motion Detection pin, so you need to create an I/O box for every camera which you want to use Video Motion Detection function. For this combination, the same name and IP address are required. This I/O box should be created by 'Drag & Drop' mouse operation for camera icon under "Cameras" tree in "Setup Manager" window. When I/O box in your system meets all the following conditions simultaneously, you should delete and create it again newly after upgrading to v3.3.0.

- I/O box in your system was created with previous version of RealShot Manager, which was earlier than v3.3.0.
- Use "Video Motion Detection".
- The name of I/O box is different from camera name.

When PAL cameras are connected to SNT-V704, although "720 x 480" is appeared in "Resolution" in "Setup Manager" window, as selectable maximum resolution, it means actual "720 x 576" of SNT-V704. "Video Motion Detection" area might have some gap after selecting each resolution in PAL camera case when you select this resolution after specifying detection area. In this case, please specify detection area again after selecting each resolution.

When you switch Video Source Input Number of Camera Tab in camera property, the linked Video Motion Detection pin of the I/O box should change to the same Input Number.

When you use Video Motion Detection function, I/O boxes should be created for every camera. The Input-Output pins in the I/O box do not work for each camera, but they are one set as a whole. As to Input Pins, the status is reflected in all I/O boxes, but please note that as to Output Pins, only in the I/O box which you operate is reflected your referring situation. For example, if you set Output1 of I/O box A ON, Output1 of I/O box B will still display OFF sign.

2. Resolved Known-Limitations

2.1. Resolved limitation in version3.3.0

The following known-limitations are resolved in v3.3.0

[No.2-14] About camera assignment to I/O pin

Information of camera assignment to I/O pin is not saved if you assign the camera to I/O pin and exit RealShot Manager in the following procedure.

1. Open Setup Manager window
2. Assign some cameras to I/O Box
3. Assign some cameras to “Enable” pin
4. Close Setup Manager window
5. Exit RealShot Manager

When you exit RealShot Manager after you assigned to I/O pin, please keep the following procedure.

1. Open Setup Manager window
2. Assign some camera to I/O Box
3. Assign some camera to “Enable” pin
4. Close Setup Manager window
5. Open Setup Manager window
6. “Enable” checkbox of this I/O pin turn off and turn on
7. Close Setup Manager window
8. Exit RealShot Manager

In additional, in the case of that camera assignment to I/O pin is not saved, this I/O pin is not displayed when you make alarm schedule using this camera, so please assign camera to this I/O pin in Setup Manager window, again. After this, this connection information is saved.

2.2. Resolved limitation in version3.2.1

The following known-limitations are resolved in v3.2.1

[No.3-32] Notice of adding a camera when using Alarm Recording function with its Local Storage Recording

When you add a camera which has Alarm Recording function with Local Storage Recording and use this function, please restart RealShot Manager once after adding the camera. Otherwise this function may not work correctly.

2.3. Resolved limitation in version 3.2.0

The following known-limitations are resolved in v3.2.0

[No.3-14] The maximum value of “Moving Duration” of Camera Tour

Only when the value over 82,400,00 is specified in “Stay Duration” or “Moving Duration” of Camera Tour, error message, the maximum value of it is 82,400,000, is displayed. But the actual maximum value is 32,767.

[No.3-13] Specifying the value, between 32,768 and 82,400,000, in “Moving Duration” at Camera Tour

When you specify the value from 32,768 to 82,400,000 in “Stay Duration” or “Moving Duration” of Camera Tour setup window, it is not rejected at this time, but it can not be saved to database when RealShot Manager exits. Maximum value of “Stay Duration” and “Moving Duration” is 32,767.

[No.3-12] Preset Position information for SNC-RZ25

When you configured preset position for SNC-RZ25, it is not displayed after booting of RealShot Manager. If this happens, please execute Pan, Tilt or Zoom, if only a little, by using Pan&Tilt tool bar or Dynamic PTZ function.

[No.3-11] Motion Detection configuration for each preset position of remote camera

In Server/Client configuration, Motion Detection configuration for each preset position of remote camera made in Client side is not saved.

In Server/Client configuration, please configure Motion Detection for each preset position of camera through local RealShot Manager GUI.

[No.3-8] When camera connected to SNT-V304/V704

When camera connected to SNT-V304/V704 is registered as Remote camera, Input1 is always selected even if any other Input is selected.

In this case, please select correct Input number and push “Apply” button in same window after registration.

About which Input is selected, you can confirm it on monitor window, because Input number is displayed on monitor window.


[No.3-5] Unable to store recordings into defined Storage Location due to “File System Full”

Messages like “MAN REC” or so forth, which indicate “in recording”, will still be displayed, even though the current recordings is physically unable to be stored into defined Storage Locations due to “File System Full” condition or something. In that case, a message of “Can't flush xxx bytes (No space left on device)” should be displayed on the status field of main GUI and Error Log Window. So, please pay attention to messages displayed on the status field of main GUI and Error Log Window in the case.

[No.3-2] Dynamic masking in no stream mode

Although “Stream mode” is default setting in RealShot Manager, Dynamic masking would not be available with “no stream mode”.

- (*) Stream mode – the mode that images are sent from camera. You can specify maximum rate of camera.
- (*) No stream mode – the mode that camera is requested to send a image per a commend. Transfer rate becomes 15fps at maximum case.

 This is described in ”51. Stream Mode with definition of Dynamic Masking” of “3. Notice about specification of RealShot Manager”.

[No.2-13]: Camera Tour setting

When you make new configuration of camera tour, please make it using “Tours toolbar”, not “Setup Manager” window.

If you make it in “Setup Manager” window, it does not reflect to “Tours toolbar” until you push “Customize Tours...” button of “Tours toolbar”.

[No.2-12]: Edit camera assigned to IO Pin

When you edit camera configuration, which is allocated to IO Pin, in “Setup Manager” window, please edit the target camera configuration under the camera tree in this window.

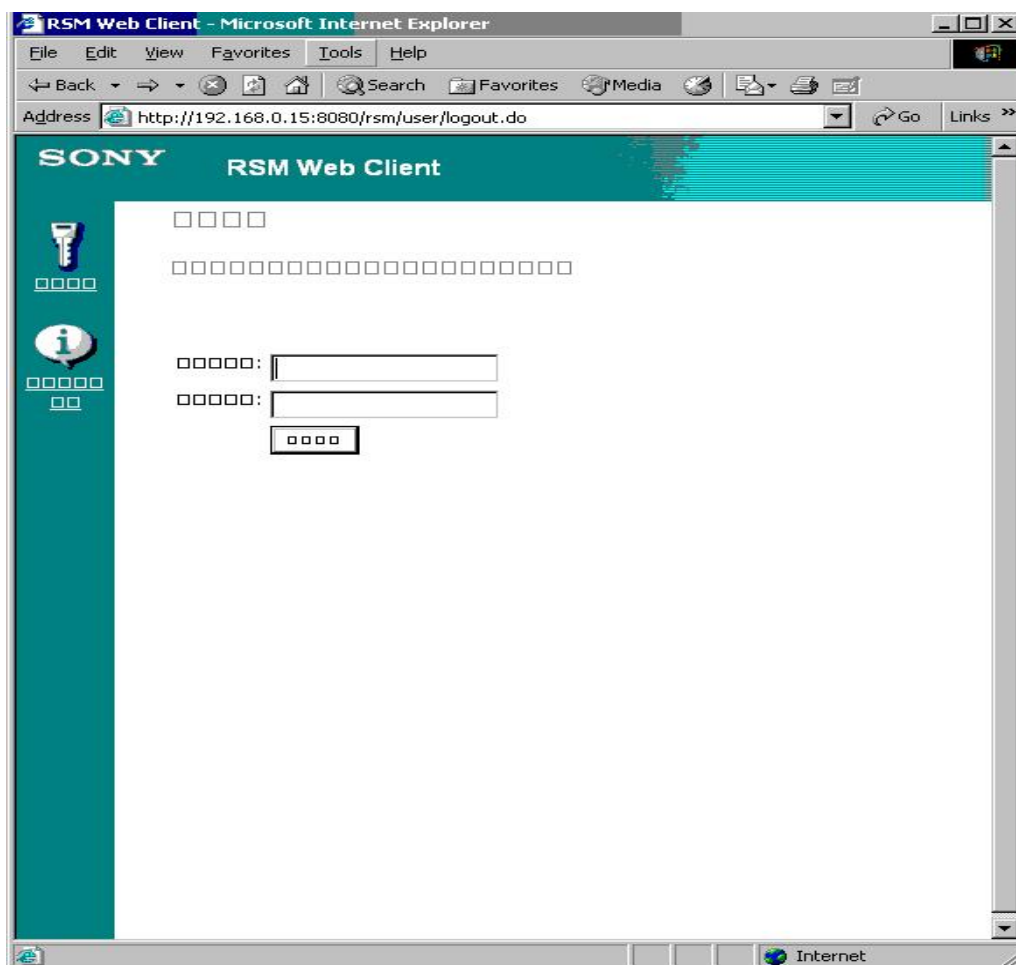
If you select camera under IO pin and push “Edit Device(s)” button located on upper bar of “Setup Manager” window, you can’t edit camera configuration.

[No.2-7]: The problem at the time of connecting with RSM Web Gateway which is operating with the Japanese version Windows from the English version Windows PC

In the environment, which is using RSM Web Gateway with the Japanese version Windows PC, when web browser is launched with the English version Windows PC to connect with RSM Web Gateway, login screen carries out incorrect character transformation as follows. In this case, input a user name into the upper text box, input password into a lower text box, and log in to the system.

The screen after login is displayed normally.

This phenomenon is generated only by difference between OS language environment of RSM Web Gateway and a Web client..



➡ This is described in “80. When connecting to RSM Web Gateway running on Windows PC Japanese version” of “3. Notice about specification of RealShot Manager”.

2.4. Resolved limitation in version 3.1.3

The following known-limitations are resolved in v3.1.3

[No.3-15] Moving action is sometimes done abnormally, not according to specified “Moving Duration”, in Camera Tour for SNC-RZ25

Camera Tour function is achieved by combination of “Stay Duration” and “Moving Duration” between each specified position, but when you use SNC-RZ25, moving action is sometimes done abnormally, not according to specified “Moving Duration”.

2.5. Resolved limitation in version 3.1.2

The following known-limitations are resolved in v3.1.2

[No.3-27]: Sometimes RSM of Client side exits abnormally when layout, which includes remote camera, is changed

When some layout, which includes monitor window of remote camera, is changed another layout, if connection is temporary lost between Client and Server, RSM of client side sometimes exits abnormally.

2.6. Resolved limitation in version 3.1.1

The following known-limitations are resolved in v3.1.1

[No.3-26]: Sometimes audio is not output by output control button allocated to Audio Output bin

It is the specification that prepared audio data is output to Audio Out of camera by pushing Output control button allocated Audio Output bin, but sometimes it is not output.

[No.3-25]: RealShot Manager exits abnormally by deleting “Unknown camera” remained in IO box

If the camera, which has been already allocated to some IO device, is deleted from Camera tree before deleting it from IO box in Setup window, it becomes “Unknown camera” in IO box. After that if you delete it from IO box by drag&drop operation, RSM exits abnormally.

[No.3-24]: “Check remaining disk capacity” check box does not work in scheduled Cleanup job

In original specification, if you check in “Check remaining disk capacity” check box in scheduled cleanup job, RSM should check remaining disk capacity of Storage Location and cleanup job should be run only when remaining disk capacity is under specified value, but it is always done without any judgement for specified condition.

[No.3-23]: RealShot Manager exits abnormally if some action, which does not have any kind of action, is done when hot spot monitor is displayed in 2nd monitor

When hot spot window is displayed in 2nd monitor, RealShot Manager exits abnormally by executing some action, in which any action is not defined.

[No.3-22]: Alarm Output to SNC-P5 does not work

Even if you make output bin of SNC-P5 available, any alarm is not output to it.

[No.3-21]: Icon of remote camera is displayed as icon of “Storage Location” in “Assign camera” window

Nevertheless camera icon should be displayed for remote camera, Storage location icon is displayed in “Assign camera” window.

2.7. Resolved limitation in version 3.1.0

The following known-limitations are resolved in v3.1.0:

[No.3-20]: Illegal characters can be entered as Preset Position Name for SNC-RZ30

Only alphanumeric characters should have been permitted Preset Position Name for SNC-RZ30, However, illegal characters, except for alphanumeric ones, can actually be entered for the name. The name then is garbled when it is displayed.

[No.3-19]: An issues on Scheduled Recording and Alarm Recording towards SNC-P1/DF40/DF70/P5/RZ25

Update of the image will be paused for maximum twenty (20) seconds both at the beginning and the ending of a recording when original definitions of Scheduled Recording and Alarm Recordings in Camera Setting are different from those definitions in monitoring

➡ This is described in “81. When settings of Alarm Recordings and Schedule Recording, are different from Monitoring when the settings is being applied towards SNC-P/P5/DF40/DF70/RZ25” of “3. Notice about specification of RealShot Manager”.

[No.3-18]: An issue on assigning a remote camera to a monitor screen

After re-starting of RSM, “NO CAMERA” message may be displayed on a monitor screen when a remote camera is assigned to the monitor screen because the re-starting may release the assignment to the remote camera.

[No.3-17]: An issue on display of IP address on General Setting screen

An IP address for a device in General Setting dialog will not be changed automatically when another device of same type was chosen instead of the device.

[No. 3-16]: An issue on Client GUI, which is connected to more than one remote server

It may occur that General Setting dialog and Schedule Setting dialog on a Client GUI will not open when the GUI is connecting to more than one remote server.

[No.2-19]: Activity Detection setup for remote camera

Please close “Setup Manager” window once, after you have set “Activity Detection area” to remote camera. If you see this area, which you specified without closing

“Setup Manager” window, setup information, which you specified, looks not to be reflected.

[No.2-18]: modify camera name in “Setup Manager” window

If you modify camera name only in “Setup Manager” window, please click other item in device tree located left side of “Setup Manager” window. The message, which urges you to save this, is displayed, so please select “OK” button.

[No.2-17]: When set up Dynamic Masking "Freeze image during PTZ movement" by Controller GUI.

Checking to the check box of "Freeze image during PTZ movement" with no Dynamic Masking setting under Server-Client type composition does not work. So that is not meaningful.

Although the check box can be chosen, it does not become effective in fact.

When at least one Dynamic Masking is set up, the selection by the check box is effective.

[No.2-16]: About “Exit Application” permission of user manager

When “Exit Application” permission of user manager is set to disable and protection authority is available, and then the full screen button is pushed, it cannot return to the original screen. In this state, login by a user with user manager permission, and set up the target user's “Exit Application” permission.

3. Notice about specification of RealShot Manager

1. The case of connecting Client to Server via Proxy

In the case that Client (*) connects to Server (**) via Proxy, please use Microsoft windows standard Proxy.


RealShot Manager does not support other any Proxy Server.

(*) RSM Controller/RSM Viewer/3rd Party application using RSM API

(**) RSM Standard

2. The case of removing camera only from “Group”

If you want to remove camera only from “Group”, please put mouse cursor on the target camera in “Group tree” of Setup Manager window, and move it pushing left button of cursor. By this operation, you can remove camera only from “Group”.

If select target camera in “Group tree” and push  “Delete Device(s)” button, which is located on upper bar of Setup Manager window, not only to be removed from “Group”, but also deleted camera itself.

3. Exporting camera setting

Dynamic masking information and Storage location information is not exported in camera configuration export.

4. Importing device configuration to Remote Server

It is not supported to import device configuration to Remote Server.

5. To playback recorded data of Remote Server

It is necessary to allocate recording folder of Remote Server using “Sharing drive” function when you want to display thumbnail image of recorded data of Remote Server. In this case, please specify “Default” as sharing name.

In addition, if you installed RealShot Manager in default install path, path name of recording folder is the following:

C:\Program Files\Sony\Sony RealShot Manager\Recordings

6. Comment attached to recorded data of Remote Server

You can't add any comment to recorded data of Remote Server.

7. Deleting recorded data on Remote Server

You can delete recorded data on Remote Server using Cleanup Job. You can't delete it manually in Search Recording window.

8. Audio file output to Audio out of Camera

When prepared audio file is sent to Camera Audio Out by Alarm triggering or Output Control, audio sounds sometimes with pause by the reason that network bandwidth is narrow, heavy task loads to network, or etc.

9. Audio file, which is used in “Audio Output function”

It is designed under the assumption that Audio file would be prepared by the customer.

The format, which RSM supports, is only raw data file of G.711 or G.726. RSM does not support other format file, such as WAVE file or MP3 file.

Extension of audio file should be specified as follows (any file name in *):

g.711 64 kbit/s Encoded Files (*.g64)
g.726 40 kbit/s Encoded Files (*.g40)
g.726 32 kbit/s Encoded Files (*.g32)
g.726 24 kbit/s Encoded Files (*.g24)
g.726 16 kbit/s Encoded Files (*.g16)

In the case of “*.g64”(G.711), monaural, 8bits/sample, sampling frequency 8KHz

In the case of “*.g40”(G.726), 5bits/sample, sampling frequency 8KHz

In the case of “*.g32”(G.726), 4bits/sample, sampling frequency 8KHz

In the case of “*.g24”(G.726), 3bits/sample, sampling frequency 8KHz

In the case of “*.g16”(G.726), 2bits/sample, sampling frequency 8KHz

The characters, which can be used as Audio file name, are only half angle alphabetical characters and the followings (half angle):

‘ . * - () _

10. About camera resolution in Scheduled recording


When multiple schedules are set in same term for one camera in Schedule Editor window, most highest resolution is selected.

For example, if Alarm Recording, Normal Recording and Monitoring are scheduled for it camera and resolution of Normal Recording is highest, Alarm Recording records image with resolution of Normal Recording.

11. Timing to start Cleanup Job

Cleanup Job starts at “Start Time”. So, if you schedule “Start Time” and “End Time” as current time is between them, it does not start at once. It will be started at next “Start Time”.

12. About “Comment” attached to recorded data, which is deleted Cleanup Job

In Cleanup Job, recorded data is deleted, but comment attached to the data is not deleted. If you want to delete the comment, please delete it using “Cleanup Recordings Comments ...” button  , which is located on right side of upper bar of Search Recordings window.

13. Operation in Edit mode

Please do not any operation in Layout “Edit Mode” except for Layout edit operation.

14. Camera of Remote Server

When you always monitor cameras of Remote Server, please use them as mapped camera. When you assign them to monitor window without mapping operation, the connection of these cameras and monitor windows will be broken after RealShot Manager restarts.

15. The number of RealShot Manager to be able to connect directly to same one camera

Only one RealShot Manager can connect to one camera directly. If you want to monitor or record image from same one camera from multiple PCs, please make one RealShot Manager “Remote Server”, which connects one camera directly, monitor or record from other PC via this “Remote Server”.

16. Use SNC-P1/SNC-DF40/SNC-DF70/SNC-RZ25 in Layout tour

It will take some seconds to update images on SNC-P1/SNC-DF40/SNC-DF70/SNC-RZ25 in real-time after switching layouts when a layout tour with a layout including monitor windows of those cameras.

17.Changing IP address or Port No. of Cameras

If the camera, of which you want to change IP address or port No. ”, is assigned to “Audio box” or “IO box”, it is necessary to change IP address or Port No. of the camera, which is assigned to “Audio box” or “IO box”, not only to change it via “Camera Properties” or “Camera” device in Setup Manager window.

18. “Cleanup all files” check box in cleanup job

Recording data, which does not exist in RSM database, exists on Hard Disk Drive when you delete recording data in Search recording window or Windows OS crashes during recording. If “Cleanup all files” check box is checked, these recording data is included in candidate cleanup job.

19. Specify incorrect IP address or port no.

If you specify incorrect value for IP address or port no. for a device, it does not cause error at that time. After RealShot Manager has accessed the device once, which has incorrect IP address or port no., RealShot Manager detects it. That detected error is displayed on the status area of RealShot Manager main window and described in log file.

20. “End time” of cleanup job schedule

Scheduled cleanup job starts at the time, which is specified in “Start time”, but it does not finish at the time, which is specified in “End time” since cleanup job does not refer the “End Time”.

21. “End time” of some cleanup job, which is same as “Start time” of next cleanup job

If “End time” of some scheduled cleanup job is same as “Start time” of next scheduled cleanup job, this “next scheduled cleanup job” does never start, because this cleanup job is combined to one cleanup job. Please specify more than 1 second between each other cleanup job.

22. Limitation of recorded data retention period

Upper limitation of 1 table is 1Gbytes, because RealShot Manager Windows edition uses Microsoft Access as database.

On the other hand, the table size, which manages recorded data, increases 552 bytes per 1 record on database.

So, the maximum number of recorded data, which RealShot Manager can keep in database, is:
 $1,000,000,000 / 552 = 1,811,594$

It means that the maximum retention period would be 786 days if you use 16 cameras and the number of recorded data per 1hour for 1 camera is 6.

23. Optimization of Database

If you delete unnecessary data, Microsoft Access does not release the area, which was occupied by the unnecessary data. And data base area will increase every time when you execute query, and those increased areas are not removed automatically. So, it means database size becomes larger while you use RealShot Manager, and the increased areas might affect on the performance of search data.

Please do “Optimize” using MS Access tool etc. to release these unnecessary area periodically.

24. Search time for continuous long recording data

If you execute continuous long recording, such as the case that you execute 24H recording and keep recorded data more than 1 month, it sometimes happens that it might takes some time to display thumbnail image in Search recording window.

In this case, you can shorten the time to display thumbnails by set 1-second space per 1 day during scheduled recording on Schedule Setting window.

For example, if you specify scheduled recording from 0:00:00 to 0:00:00 next day, you can solve it by specifying scheduled recording from 0:00:00 to 23:59:59. Please note that image is not recorded from 23:59:59 to 0:00:00 in this case.

25. Instructions on recordings under Partial Archive condition

A recording created by RealShot Manager is composed of more than one recording file. Partial Archive condition means that some of the recording files are archived and the others still remain on storages on a PC. The following limitations are applied towards the recordings under Partial Archive condition:

<Playback of the recording>

Recording files on Hard Disk can be play-backed. In this case, playback is done from specified recording file on Hard Disk sequentially, but it is stopped when reached to the first archived recording file.

<Displaying thumbnail on Search Recordings Screen>

When you try to display thumbnails by clicking some recordings on Search Recording window, only thumbnails of recording files, which exist on Hard Disk, are displayed. That means that thumbnails of archived recording files in a recording will not be displayed even though you clicked the recording.

Also, if you click each of recording files in a recording, thumbnail images of the file may not be displayed sometime because thumbnail images of a recording are created based upon a premise that the thumbnail images have to be created by whole recordings.

<Restoring recordings>

A recording can be restored at once by specifying the recording itself when all of recording files included in the recording are archived.

On a recording under Partial Archive condition, it is required to specify recording files included in the recording one by one for restoring the recording.

Partial Archiving Condition will occur when one the following processes are executed:

a. Cleanup

An archive will be executed within Cleanup. Recording files, whose create dates are older than a specified date in Cleanup, will be targets of the archive. Partial Archive Condition will occur when some of the create dates of the recording files matched with the specified date and the others did not.

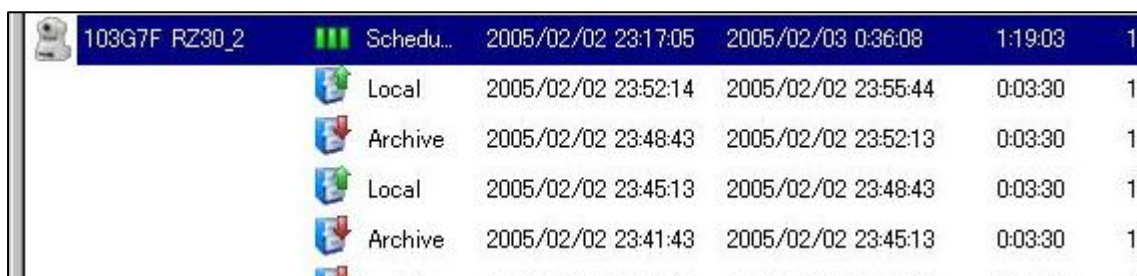
b. Partial restoring towards a recording, of which all recording files were archived, manually.







Partial Archive Condition will occur when a part of fully archived recording files in a recording was manually restored.

It is required to restore all recording files included in a recording, which is under Partial Archive Condition, for displaying thumbnail of the recording correctly.



It is available to confirm which recordings are under Partial Archive Condition.

Archived recording will be displayed with all entries of recording files, which are included in the recordings as follows:



	103G7F RZ30_2		Schedu...	2005/02/02 23:17:05	2005/02/03 0:36:08	1:19:03	1
	Local			2005/02/02 23:52:14	2005/02/02 23:55:44	0:03:30	1
	Archive			2005/02/02 23:48:43	2005/02/02 23:52:13	0:03:30	1
	Local			2005/02/02 23:45:13	2005/02/02 23:48:43	0:03:30	1
	Archive			2005/02/02 23:41:43	2005/02/02 23:45:13	0:03:30	1

<A recording under Partial Archive Condition>

A drawer icon  at the top of recording file names indicates that they have already been archived and recording file names with  icon indicate that they are still on the local storage.

There are two manners to restore all recording files included in a recording under Partial Archive Condition. The manners are as follows. Please select more convenient one from them in accordance with status of Partial Archive Condition at the moment:

1. Restore all recording files in a recording after archiving all of them once;

2. Restore all archived recording files in a recording one by one.

To minimize duration of recordings being under Partial Archive Condition, please adjust length of time for recording files, which will be archived, shorter than an interval of executing archive by Cleanup.

26. Archive Operation

Archive function of RealShot Manager is designed under the assumption that archive would be executed for the recordings, which has been already finished to be recorded. So, archive can not be executed for the continuous twenty-four hour recordings everyday.

If archive is executed for such a recordings, please stop recording. After that archive for whole data of recording would be finished.

27. Required environment to execute motion detection module of RealShot Manager

In our QA test environment, we have confirmed that motion detection module works with 5fps QVGA images, which come from 9 cameras, on the PC with 1 Intel/Pentium4 2.0GHz, without any problem. Please select PC fitting with your environment using the above value as a reference.

28. Notice of executing Pan, Tilt, and Zoom, with SNC-RZ25.

In the case that you want to operate Pan, Tilt Zoom for SNC-RZ25, please use Pan&Tilt toolbar when you want to execute this operation roughly.

If you want to execute fine adjustment, please use Pan, Tile, Zoom function by <Ctrl> + clicking left button of mouse.

29. Delay of audio data

Audio data would be delayed 1 second comparing with image at maximum case.

30. Pre-Alarm recording for audio data

Pre-Alarm recording function is not supported for audio.

31. Using PC, which has multiple NIC, as server of RealShot Manager

If you want to use PC, which has multiple NIC, as server of RealShot Manager, please set the following to this PC.

- Specify Sharing name, which is used by Client, different name from Computer name (Host name)
- Describe the following in *<Windows system folder>\system32\drivers\etc\hosts* file using Notepad etc:

<IP address of network card, which is used by RealShot Manager> <Sharing name>

For example, in the case that IP address of network card, which is used by RealShot Manager, is 192.168.0.100, and Sharing name is "RSM", describe as followings in this file:

192.168.0.100 RSM

<Windows system folder> might be different by environment of PC. In the case of initial install of Windows XP, it should be C:\WINDOWS.

32. Recording for the camera, which is not assigned to Storage Locations

If recording is executed for the camera, which is not assigned Storage Location, recording status is displayed on monitor window. But recording is not executed, practically. Error message is displayed on status column, at the bottom of main window.

33. Notice of I picture interval and recording time

When recording is done in MPEG4, a recording might not be play-backed if recording time is shorter than I picture interval. Please specify recording time longer than I picture interval.

34. Archive for camera, which includes '/' in its name

You can't execute archive for the recording of the camera, which has '/' in its name. If you want to execute archive for the camera, which have already named using '/', please register it again as new camera with different name. It is not necessary to remove entry of camera, which has old name.

35. Reverse playback for MPEG4 recording data

Reverse playback for MPEG4 recording data is not smooth. Please use it only the purpose to search start point of playback.

36. Notice of setting Dynamic masking for SNC-Z20

In the case of SNC-Z20, specified masking area may be slightly shifted by Zoom operation. In addition, image updating on a monitoring screen cannot be stopped during Zoom operation in SNC-Z20.

Please specify masking area more widely than the actual area, which you want to set masking area, actually.

37. Register SNC-RZ30/2

When you register SNC-RZ30/2, please register it as "SNC-RZ30".

38. About Compression Server

Compression Server does not support MPEG4 stream.

39. I/O box of Motion Detection

I/O box of Motion Detection is not displayed in I/O box of Setup Manager Window until Motion Detection is set.

40. No Stream Mode in MPEG4

In MPEG4, "No Stream Mode" is not supported. If you check out "Stream Mode" in Picture tab of Camera Properties window, "NO CONNECTION" is displayed in Monitor window.

41. Thumbnail images of recording data on Remote Server

Storage Location path of Remote Server should be shared by “map network drive” to show Thumbnail images of recording data of Remote Server in Search Playback window.

42. “map network drive” for new storage location of Remote Server

When new storage location was created in Remote Server, it should be shared as “map network drive” on Remote Client. Otherwise, thumbnail images of recording data in new storage location of Remote Server can not be seen in Search Playback window of Remote Client.

For more details, please see the User Guide. It is described at the section "Installing RealShot Manager Server", refer to "Setting up a shared Storage location".

43. About “Search Recording” job

“Search Recording” job takes more time linearly as the number of recording data, which is satisfied with specified search condition, grows. In our test environment, it takes about 15sec to get the result of “Search Recording” for about 2,000 recording data, which is satisfied with specified search condition, with Pentium4/2Ghz * 1 PC.

When “Search Recording” job is cancelled by http “Time Out” or customer operation on GUI side, internal search recording job is still working and it will continue by his work will complete. During this time, it consumes memory and CPU, so some image from camera might be dropped.

So, please specify search condition so that the number of recording data, which is satisfied with specified search condition less than 1,000 at a maximum, by selecting one camera and shortening search target term.

44. Tour function on SNC-P5

Tour function is not available on SNC-P5.

45. Mask-areas with Dynamic Masking

Mask-areas specified toward cameras with Pan, Tilt, or Zooming functions, especially SNC-P5 may be shifted when being taken those functions on the cameras. Please specified the areas with about 10% extra to its actual sizes for target objects.

46. Movement of Mask-areas during Panning, Tilting, or Zooming

Mask-areas on screens for cameras will be moved in accordance with actions like Panning, Tilting, or Zooming taken on the cameras.

Movement of the areas may get behind with movement of those actions. Please check "No motion detect during PTZ movement" in Dynamic Masking tab on Camera Setting screen when reliable masking for target objects are required on the screens.

47. Number of cameras towards video servers for the license control

It is available to connect maximum four analogue cameras to SNT-V704. As same as required to SNT-V304, valid Camera License is essential to the cameras individually. It is also available to connect maximum four analogue cameras to SNT-V504. It, however, is not available for SNT-V504 to produce image streams

individually from cameras connected to SNT-V504. Therefore, from the licence control point of view, SNT-V504 itself is accounted to be one camera even though more than one cameras are connected to SNT-V504.

48. Known limitations when SNT-V704 is used as a camera for RSM

The following functions are not available when SNT-V704 is used as a camera for RSM:

- Four-divide (Quad) display;
- Change of Colour Level;
- Camera Tour;
- Zooming with T/W on Pan-Tilt toolbar
- Dynamic Masking
- Please specify the function to SNT-V704 directly through Internet Explorer when you use the function.
- Alarm action with Motion Detection embedded in SNT-V704 itself.

49. When input-definition to SNT-V704 was changed

The previous one to SNT-V704 is carried over. Please re-confirm the definition after the change.

50. When Colour Level on Camera Setting dialog was set to 1

Images from the camera will not be displayed in monochrome in the true sense although there is a description regarding this case in RSM' Users Guide, which says that the images are displayed in monochrome.

51. Stream Mode with definition of Dynamic Masking

It is not available to release Stream Mode for a camera when definition of Dynamic masking is set for it. Please remove the definition to release Stream Mode. After the removing, it is not available to mask images from the camera. It is not available to define Dynamic Masking to images from cameras while releasing Stream Mode to the cameras.

When Dynamic Masking with JPEG Non Stream Mode was defined before updating to RSM v3.1, Stream Mode is automatically chosen on Camera Setting screen after the upgrading.

52. Harmful influences when one camera is shared as a local camera by some RSM Standards

It is forbidden in RSM that one camera is defined as a local camera between some RSM Standards.

Because such definition will cause harmless influences between those RSM Standards, e.g., replacing the definition to the camera on one RSM Standard with other RSM Standard, removing masked areas, or so forth. Please do not define this.

53. Modes for Dynamic Masking definition screen

The screen has two modes of Preview and Editor. The screen will be automatically launched in Editor mode when connections between RSM Standard and cameras have already established. If not, the screen will be done in Preview mode. Please establish the connection first and then define masking areas.

54. PAN, TILT, or ZOOM during Motion Detection by software

55. Display of thumbnails of recordings on remote servers through Search Recordings screen on clients' GUI

It is required to define that Storage Location folders on the remote servers to be accessed for displaying thumbnails of recordings on remote servers through Search Recording screen by clients' GUI can be shared by the clients' PCs.

Please specify names for the folders on the remote servers identical to names of Storage Location folders defined in RSM.

For example, default value of Storage Location in RSM is "Default". In that case, names of Storage Locations on remote servers to be referred should always be "Default".

56. Mount Angle towards mapped cameras

RSM Controller/Viewer considers cameras on remote servers to be physical ones literally. The cameras, however, are considered to be logical ones on clients when the cameras are mapped to the clients as Mapped cameras locally and RSM Controller/Viewer considers the Mapped cameras to be different from the cameras on the remote servers. Mount Angle set to the Mapped cameras, therefore, do not mean Mount Angle of the cameras on the remote servers even though those cameras are the same ones physically. An angle to images sent from the remote servers is equal to an angle of zero degree of Mount Angle for the Mapped cameras. Change to Mount Angle to the Mapped cameras, therefore, have no influence upon images sent from the cameras on the remote servers. However, when Mount Angle to the cameras on the remote servers is changed, angle of images from the Mapped cameras, is also changed accordingly.

57. Controlling of Audio In/Out level on cameras

It is available for RSM to monitor or output sound on cameras like SNC-P1 and so forth, which have Audio In/Out function. RSM, however, has not function to control Audio In/Out level on the cameras.

Procedures to control the level are to establish direct connection to cameras using Microsoft Explorer and so forth, and then to control the level.

58. Recognition of removed volume from storage device

In RSM, It is not available to recognise whether volumes are currently mounted on a storage device, or not, when Archive function tries to archive/retrieve recordings to/from the volumes. Maximum data size to be archived by RSM, hence, cannot exceed total size of volumes, which can be mounted on a storage device.

59. Format of image recordings using Archive

Please choose "Tagged MetaData" for format of image recordings when using Archive. The format can be chosen in "General" tag on "General Setting" window. Default value for the format is "Tagged MetaData".

60. Version Down Installation

The installation above is not available in RSM. That means that a version of RSM,

which is older one than current version installed in a PC cannot be installed into the PC.

To install an old version of RSM replacing with a new one, it is required to uninstall the new one once and then to install the old version.

61. Interval between image acquiring under Non Streaming Mode

It is required to set interval between image acquiring to 1000 milliseconds or longer when Non Streaming Mode will be used. The interval can be specified by millisecond at Interval field in Video tab under Camera Setting dialog.

62. When a message of “cannot connect to remote host” is displayed on Archive Job List

It will occur rarely that a message of “cannot connect to remote host” is displayed on Archive Job List in executing Archive. The message means that RPC (Remote Procedure Call) error occurred in Windows. In this case, to restart Windows is required for recovering the error.

63. Limitation when Remote camera is used as Mapped camera in Client side

If you want to record image from Remote camera on Client side hard disk, you should make it mapped camera of client side. In this case, only manual recording can't record image on Remote Server hard disk (about scheduled recording and alarm recording, you can record it on Remote Server hard disk even if you create mapped camera).

64. When date of Server side PC is backed in Server/Client configuration

If you back date of Server side PC in Server/Client configuration, “Output Control” of IO box Output bin becomes unavailable from Client GUI. In this case, please reboot RealShot Manager in Server side.

65. Thumbnail of recording data during PTZ with “Freeze image during PTZ”

When “Freeze image during PTZ” is checked in “Dynamic Masking” setting tab window, if Pan/Tilt/Zoom is executed during recording, thumbnail image of recording data during PTZ is filled by orange color.

In playback, image is freezed during Pan/Tilt/Zoom.

66. When preset is specified as “Action” in “Insert Image” window

When preset is specified as “Action” in “Insert Image” window, you should specify preset not using preset number, but using preset name.

67. When Cleaning job and Recording job run simultaneously

When Cleaning job and Recording job run simultaneously, some image frame might be dropped before recording because of Disk I/O load.

Please run Cleaning job during Recording job is not so heavy.

68. About the problem at the time of carrying out manual record of a server camera and the map camera simultaneously

In Server-Client system type, when a server camera is registered as a map camera from Controller PC and manual recording is performed, "MAN REC" status will usually be displayed on the monitor window.

However, when manual recording is performed simultaneously with a server camera, priority is given to the status display of manual recording of a server camera.

Therefore, it is displayed on the monitor window of a map camera as "SRV MAN REC." status will be displayed on the monitor window

When you check whether the recording is performed with the map camera, please refer to the record data of the map camera, which corresponds on the Ssearch Recording screen.

69. About specification of "Camera Tour"

In the specification of "Camera Tour" in RealShot Manager, "Moving Duration" and "Stay Duration" should be specified using mili-second unit. On the other hand, Pan and Tilt speed for camera should be specified using several level, such as "Level 1", "Level 2", not continuous value. It means actual moving action is never done as you specified even if you would specify it nicely using mili-second in "Moving Duration" of Camera Tour setup window. For example, if you specify "25,000" msec in "Moving Duration" via Camera Tour setup window of RealShot Manager but precise value of camera speed exists between "Level 1" and "Level 2", faster level, "Level 2" is selected. In this case, camera reaches to destination faster than specified time and it stays more than specified value in "Stay Duration", for this time gap. By this specification, RealShot Manager keeps total specified value of one cycle of Camera Tour.

70. About maximum value of "Moving Duration" and "Stay Duration" of Camera Tour

Maximum value of "Moving Duration" and "Stay Duration" of Camera Tour is 32,767. If you want to move between each position more longer than this value, please make adequate number of new position between these position and specify "1msec" for this new positions. Of course, "Moving Duration" between each new position should be less than 32,767.

71. The value, which is over than physical maximum limitation of camera, is specified in "Moving Duration" of Camera Tour

If specified value in "Moving Duration" is over physical maximum limitation of camera, moving action to the position is skipped and moving action to next position is executed. It means that if RealShot Manager judges he would not be able to complete moving action from Position A to Position B within specified time, he skips moving action to Position B.

72. Limitations on volumes of Alarm Recordings storing into a local storage of a camera

Real Shot Manager may not be able to record Alarm recording into a local storage using internal memory of SNC-P1/P5/DF40/RZ25/CS10/CS11 when volumes of the recordings per a day stored to the storage has exceeded about 90MB. In that case please use the original Alarm Recording function of RealShot Manager instead of Alarm Recording function by using local storage of a camera.

73. Management of external recording media for cameras when using Alarm Recording function with Local Storage Recording of cameras

Please do not delete data in an external recording media for cameras manually. The data shall be deleted by the Overwriting function of the camera itself.

When having deleted them manually, performed formatting to a media, or exchanged the media, due to troubles of the media, please follow the procedure below:

1. Terminate RealShot Manager;
2. Delete the following file;
 $\langle \text{Installation folder} \rangle \backslash \text{SNCRecordings} \backslash \langle \text{Camera - ID} \rangle \backslash \text{Restore.dat}$
3. Restart RealShot Manager.

74. Camera Motion Detection dialogue

Direction of an image on Camera Motion Detection dialogue is fixed to zero degree against its Mount Angle.

75. Data Overwriting function

The function shall try to retain the following size of remaining volume:

size specified by a user
 + file size of a recording * 2 * number of cameras in recording

The size of the remaining volume will fluctuates between "the size specified by a user" and "size specified by a user + file size of a recording * 2 * number of cameras in recording".

The size specified by a user can be up to 36767MB when the size is specified in MB. Please specify the size in % when the size requires being more than 32767 MB.

Please make sure to confirm by coordinating the related parameters prior to practical use whether images from cameras are recorded correctly when being under heavy-load environment such as simultaneous recording by 32 cameras. A size of a recording file is being depended upon PCs' performances, however, it has been confirmed that the file was stored correctly when the size is 10 MB or less.

76. Data Overwriting function and Archive function

The functions above cannot be used simultaneously.

77. Maximum value of size being specified in Cleanup function

The value is 32767MB specifying in "MB". Please specify the value in "%" when the value requires being more than 32767 MB.

78. When connecting to RSM Web Gateway running on Windows PC Japanese version

Characters on Web browser will not be displayed correctly when connecting from a Windows PC English version to RSM Web Gateway running on a Windows PC Japanese version. To avoid that situation, please connect from a Windows PC Japanese version to RSM Web Gateway running on a Windows PC Japanese version.

79. When settings of Alarm Recordings and Schedule Recording, are different from Monitoring when the settings is being applied towards SNC-P/P5/DF40/DF70/RZ25

Refreshing of images at the beginning and the ending of a recording will stop for a few seconds when settings of Alarm Recordings and Schedule Recording towards one of SNC-P/P5/DF40/DF70/RZ25 are different from a Monitoring setting to the one of those cameras.

80. The maximum value of Alarm Recording by a RealShot Manager alone

The maximum value of Alarm Recording by a RealShot Manager alone shall be limited by both of the following items:

- Total number of frames: 1500 frames
- Size of recorded data: 10 MB

81. Export Recording function

RealShot Manager shall perform the function using CODEC, which is being installed to a PC. Please try to playback an exported data with other PCs or choose other CODEC when the data is not played back collectly on a PC.

82. Time setting for a camera

If necessary, RealShot Manager shall overwrite a specified time setting of a camera by the system time of a PC, on which RealShot Manager is running.

83. Notice of Video Motion Detection (Recorder) for the SNC-Z20

When you use the SNC-Z20 with zoom function, Video Motion Detection (Recorder) cannot be stopped.

84. Display Duration when some alarm happens at the same time in Hotspot

Display Duration when some alarms are happened at the same time in Hotspot is switching timing between some alarms keeping effectively at the same time. In other words, when some alarms are effective, Hotspot display is switched by this switching timing. When pulsing alarm happens, hot spot display is switched quickly when every alarm happens.

85. Detection Time of Unattended Object Detection

For ease of setting operation, in the setting menu of Unattended Object Detection of the SNC-RX550 / SNC-CS50 / SNC-RZ50, an item of “detecting time” is founded in each current position and preset positions, but can be set by only one item as a whole.

86. Notice of first archiving

If you try to archive some thousands of archiving data files at first archiving, display cannot be changed for like several tens of minutes or some hours because of the heavy load.

87. Changes of user name and password of cameras

When you change user name or password to access a camera, please do not change other setting for the camera at the same time. Please “Apply” a user name or password at first, and then change other things.

88. Notice of connecting RSM controller to archiving remote server

When RSM controller connects remote server archiving much data, the list of data cannot be shown normally.

In this case, please set the receiving Time-out period of the remote server longer. The

time-out period can be set as follows.

- “General” tab in the property of the remote server
- > Arrow on the right side of “Port”
- > “TCP/IP” tab in “Port Properties”
- > “Receive Timeout”

89. Notice of Motion Detection pin Setting

Setting of I/O box Motion Detection pin, please “Apply” separately when switching Enable/Disable and setting of Video Motion Detection.

90. Notice of Tour function setting

If you set long Moving Duration in Tour function, sometimes connection to camera is cut by time out.
In this case, please set the receiving Time-out period longer than Moving Duration.

91. Notification about I/O box of SNT-V704 at upgrading to RealShot Manager v3.3.0

About I/O box of SNT-V704 at upgrading RealShot Manager to v3.3.0, when all the following conditions are satisfied simultaneously, please delete and create it newly after upgrading RealShot Manager to v3.3.0.

- I/O box in your system was created with previous version of RealShot Manager, which was earlier than v3.3.0.
- Use “Video Motion Detection”.
- The name of I/O box is different from camera name.

92. Notice of SNC-RX550 / CS50 / RZ50

The following firmware shall be used for SNC-RX550 / CS50 / RZ50 when using input pins in their I/O Boxes or “No Stream Mode” to send image:

- SNC-RX550: v1.11 or higher tentatively
- SNC-CS50: v1.11 or higher tentatively
- SNC-RZ50: v1.10 or higher tentatively

93. About Recording data Division Processing in Continuous Recording for a Long term

When continuous recording is being done for a Long term (it means you record from 00:00 to 24:00 repeatedly), the number of recording file, which configures 1 recording data, might be over 10,000. In that case, recording data would be divided as new recording data after the number of recording file reaches to 10,000. This number, "10,000", means the number of all recording files since recording started, including the number of deleted recording files by Cleanup job or Data Overwriting function. When recording data would be divided depends on the condition of camera setting, such as "frame rate", "resolution", and so on. Please see the following example:

Condition:

Codec:	JPEG
Resolution:	640x480
Frame rate:	10 fps
Image Quality:	50 %
Max File Size:	50 MB/file

The time recording data division processing would start:

About 19 days passed since recording started

In the case that you want to record continuously for a long term, we recommend to divide recording schedule by inserting 1 sec pause per 1 day.

4. Known Limitations

[No.3-34] When the Auto Layout Change function is kept executed at a client PC for a long time, the client RSM may happen to terminate abnormally.

There is a possibility that RSM processing at the client PC becomes overloaded or terminates itself abnormally in a Server/Client configuration when the Auto Layout Change function is kept executed at the client PC over a prolonged period of time.

In case of using the Auto Layout Change function, please restart RealShot Manager at the client PC once about a week. But there is no need to restart RealShot Manager at the server PC.

[No.3-33] The issue that the function of alarm recording using camera's local storage does not work normally with SNC-P5 / RZ25 using its external storage

There are two types in camera local storage, internal storage and external storage, such as "memory card". The alarm recording function using camera local storage with SNC-P5 / RZ25 using external storage does not work normally.

In the case of using the above camera(s), please use internal storage of them.

[No.3-31] An issue of audio data, which cannot be deleted by a Cleanup

When RealShot Manager was terminated while audio data recording is in operation, then entries of the audio data may remain on the list of Search Recording screen although the audio data can be deleted by Cleanup.

Please wait for more than ten seconds after the termination of audio data recording, and then stop RealShot Manager.

In the meantime, the entities above can be deleted manually on Search Recording screen.

[No.3-30] Limitations and issues in the case of creating an I/O Box for SNC-RX550/ CS50/ RZ50

There are the following limitations and issues in the case of creating an I/O Box for specifying Object Detection for SNC-RX550/ CS50/ RZ50:

- Data of "Current Position" mode specified for the cameras shall be overwritten by the default value of RealShot Manager.
- As for the data of "Preset Position" mode, which can be confirmed by RealShot Manager, may not accord with the data, which the camera has, when creating an I/O box for a Remote Server.

To avoid the latter case above, please create an I/O Box on a PC by the procedure below:

1. Open Setup Manager, and create an I/O Box on a PC.
2. Check "Enable" checkbox of I/O. When the checkbox is already being checked, uncheck the checkbox once, and check the checkbox again.
3. Close Setup Manager without doing any settings for Object Detection.

Please follow from the step #2 above, when an I/O Box was already created and the settings required for the Box are being completed. In that case, however, please confirm specified data for "Preset Position" mode once, because there is a possibility that some of the data may have been initialised.

[No.3-29] "No Camera" may appear on the Camera Motion Detection Setting screen

A message of "No Camera" may appear the Camera Motion Detection Setting

screen when a RSM Controller is being connected to a RSM Standard.
In that case, please close Setup Manager once, and then open Setup Manager again.

[No.3-28] A Configuration Name of Motion Detection specified may not be displayed

The Configuration Name having been specified may not be displayed when a RSM Controller is being connected to a RSM Standard.

In that case, please follow the procedure below:

1. Choose the camera in Setup Manager.
2. Close Setup Manager while the camera is being chosen.
3. Open Setup Manager again.

[No.3-10] When G.711 audio file is output to SNC-P5

When G.711(64kpbk) audio file is output to SNC-P5, it sometimes sounds with some pause even if bandwidth of network has enough room.

In this case, please use G.726 audio file.

[No.3-9] When multiple cameras are registered to Audio tree all at once

In “Setup Manager” window, if multiple cameras are selected and they are copied using drag & drop operation, “Storage Location” becomes empty for 2nd camera and above.

In this case, please copy one by one to “Storage Location” for every each camera, which was copied under audio tree, one by one, using drag & drop operation.

[No.3-7] Launching Archive service just after upgrading of RSM

It is required to restart of the operating system. It may occur just after the restart that Archive service cannot be launched correctly. The following message will be displayed.



In that case, please try to display “Service” screen by clicking “Control Panel” -> “Control Tool” -> “Service” in turn, and to confirm whether “Sony RealShot Manager Archiving Service” is registered correctly or not on the screen. If not, please add Archive service to the service list manually by the procedure below:

- a) Click “Start” then choose “Run”;
- b) Type the following character string in the input field.
- c) “<RealShot_Manager_Install_Folder>%ArchivingORB%ArchivingORBSservice.exe %service” in the input field;
- d) Click “OK”.

If “Sony RealShot Manager Archiving Service” is registered correctly, please confirm whether the service has been launched, or not. If not, please right click “Start” button deployed on the line of “Sony RealShot Manager Archiving Service”

After the process above, “Sony RealShot Manager Archiving Service” is always automatically launched when OS is launched.

[No.3-6] Adding or modifying Storage Locations to remote cameras

Please execute definitions of adding or modifying Storage Locations to remote cameras through General Setting dialog. Those definitions, which are made through Camera Setting dialog, will never be effective.

[Vo.3-4] Available characters for Preset Position Names for remote cameras SNC-RZ25/P5

Multi-byte characters can be used for Preset Position Names for SNC-RZ25 and SNC-P5, when the cameras are defined as local camera. Only alphanumeric characters are available to use for Preset Position Names for SNC-RZ25 and SNC-P5, when the cameras are defined as remote camera.

[No.3-3] Assign remote camera to remote audio box

When a remote camera is assigned to an audio box on remote servers through GUI of RSM Controller or Viewer, please close monitor window of the camera in advance if the window opens. Then assign it to the audio box again.

[No.3-1] tab of Camera Properties for remote camera

Some tabs of Camera Properties might not be displayed if you open it from RSM Controller or RSM Viewer. You can display them by selecting other tabs displayed.

[No.2-15] Web Gateway with low resolution display

Up side and down side of calendar are not displayed with the display, which is less than “800 * 600” in resolution.

When you use RSM Web Gateway, please use display, which is more than “1024 * 768”.

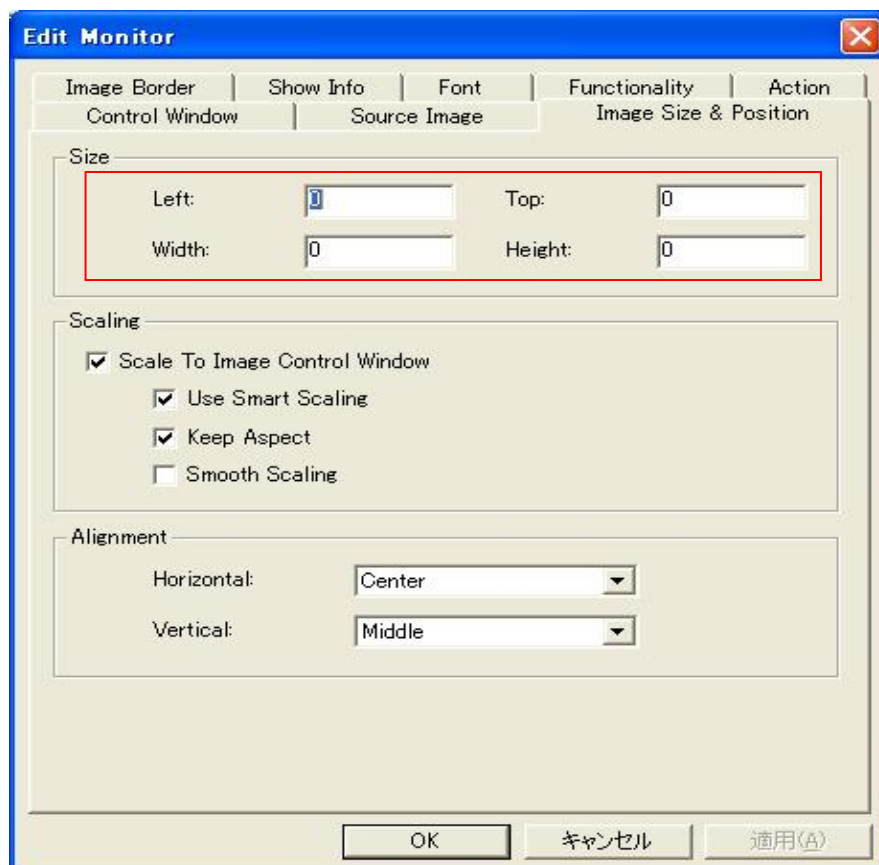
[No.2-11]: Preview of Dynamic Masking in Client GUI

When you set Dynamic Masking area from Client GUI, please preview after pushing “Apply” button.

[No.2-10]: About change method of monitor window size

When the monitor window property is opened in edit mode and size of monitor window is inputted, value of the size is reset to zero (0) and is not saved as inputted

When you change size of a monitor window, choose a monitor window and change window size by mouse operation.



(Figure: Monitor window property)

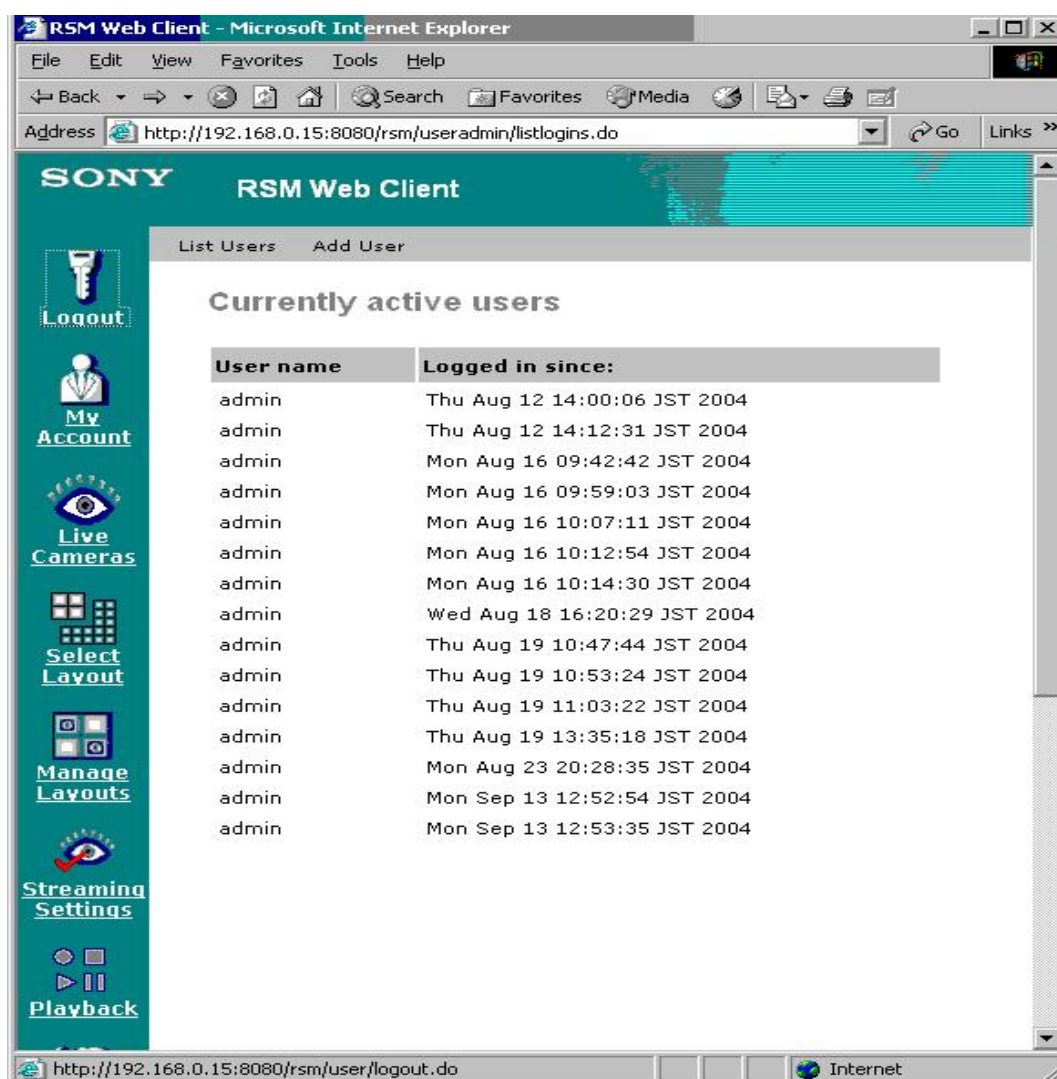
[No.2-9]: About camera name display when changing the remote server name

In Server-Client type composition, a camera name when carrying out the monitoring of the server camera is displayed in the form of "camera name @ server name". When the remote server name is changed, server name is not updated among the camera names of client PC.

In this case, if selection of a camera is redone, it will be displayed as the server name after change.

[No.2-8]: About the problem at the time of log off Windows in the state where it log-into the Web client

When Windows is logged off while keeping its logging-in to the Web client, it will remain in the present login user display list, without deleting an applicable user.



[No.2-6]: About state information acquisition of System IO-Box input-pin from Controller GUI.

In Server-Client type composition, even if state of System IO-Box ia changed, the

right state of input-pin cannot be checked from Controller GUI. An IO-Box function is originally used by applications which 3rd party created using API, and can acquire the right state information via API.

[No.2-5]: When IO-Box Input Pin of Remote Server is chosen from Action Editor

In Server-Client system type, when choose input pin of remote server on the action edit screen of controller, the direct input pin is not listed under an I/O box. An input pin can be chosen by click a camera icon.

[No.2-4]: About the problem of multiple camera display.

When displaying multiple cameras from a monitor window, the camera, which does not have names on the selection screen of a camera, may be listed.
Because the cameras, were already deleted
That will not cause problems.

[No.2-3]: An error occurs when “English” is chosen for the Guide language in installing of RSM

The following error message will appear in the first run of RSM when “English” was chosen as the Guide language during installation of RSM, except for executing under English OS. Because the Guide language is always set to local language during the installation in accordance with sorts of OS used.



In that case, please click “OK” and RSM will be launched in right condition. Then please choose “English” in Language tag in General Setting screen and launch RSM again. After that, the message will not appear.

[No.2-2]: About the problem at the time of choosing a server's IO-Box and deleting all

In Server-Client system type, when a server's IO-Box is chosen from Controller PC and all IO Pins is deleted, the “Please wait” dialog may continue being displayed. In this case, push a cancel button after checking that IO Box other than System-IO Box is deleted. Moreover, System IO-Box cannot be deleted.
When you delete registered IO Box, push device delete button after choose IO Box one by one.

[No.2-1]: About the display of title tool bar

A title may not be displayed by title display operation of a tool bar. If a title is not displayed, it is displayed that a tool bar is moved with a mouse.