

SONY

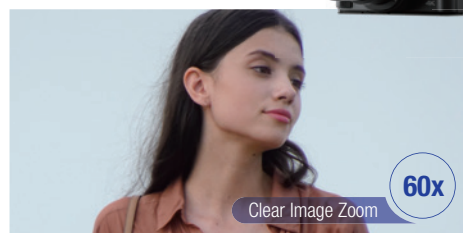
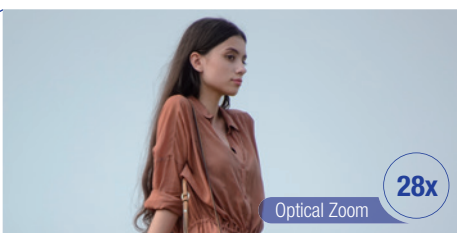
New Products Information

Digital Still Camera
DSC-WX800

Compact Camera with 28x Optical Zoom DSC-WX800



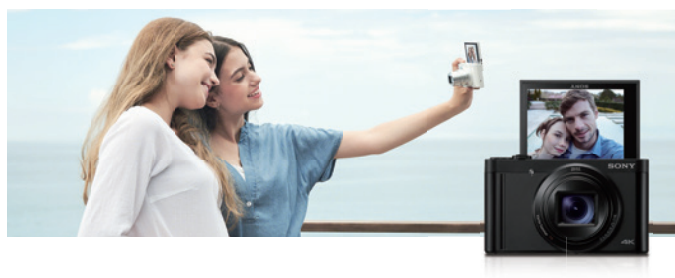
» Optical Zoom / Clear Image Zoom 28x / 60x



» Touch functions



» 180-degree tiltable LCD screen



 **Sony**
Overseas
Models

Cyber-shot
The Power of Imaging

Main specifications of DSC-WX800

Sensor	
Sensor Type	1/2.3 type Exmor R CMOS sensor
Number of effective pixels	Approx. 18.2 Megapixels
Lens	
Lens Type	ZEISS® Vario-Sonnar T* Lens
F-number (Maximum aperture)	F3.5 (W) - 6.4 (T)
Focal Length (f=)	f=4.25-118mm
Angle of View (35mm format equivalent) (still image)*1	84deg. - 3deg.30min. (24-720mm*2)
Focus Range (from front of lens)	W: Approx. 5cm (0.16 ft.) to Infinity, T: Approx. 250cm (8.20 ft.) to Infinity
Zoom	28x Optical Zoom, Approx. 60x Clear Image Zoom (4K Movie: Approx. 45x)*3, Approx. 120x Digital Zoom*3
Screen	
Screen Type	7.5cm (3.0type) (4:3) / 921,600 dots / Xtra Fine / TFT LCD
Adjustable Angle	Up by approx. 180 degrees
Touch Panel	Yes
Viewfinder	
Viewfinder Type	—
Field Coverage	—
Camera	
SteadyShot	[Still image] Optical, [Movie] Intelligent Active Mode, Optical type with electronic compensation, Anti Rolling type
Focus Type	Contrast detection AF
Focus Mode	Single-shot AF, Continuous AF (Movie Only)
Light Metering Mode	Multi Pattern, Center Weighted, Spot, Entire Screen Avg, Highlight
ISO Sensitivity	[Still image]*4 Auto (ISO80-3200), extendable to ISO6400 [Movie] Auto (ISO80-3200), extendable to ISO6400
White Balance Mode	Auto, Daylight, Shade, Cloudy, Incandescent, Fluor.: Warm White, Fluor.: Cool White, Fluor.: Day White, Fluor.: Daylight, Flash, C.Temp./Filter, Custom1, Custom2, Custom3, Custom Setup
Shooting Mode	Auto (Intelligent Auto/Superior Auto), Program Auto, Aperture Priority, Shutter Speed Priority, Manual Exposure, MR (Memory Recall) 1,2, Movie Mode (Program Auto, Aperture Priority, Shutter Speed Priority, Manual Exposure), Sweep Panorama, Scene Selection
Continuous Shooting Speed (maximum) (Maximum number of recorded pixels)*5*6	Approx. 10fps*7
Flash	
Flash Mode	Flash Off / Autoflash / Fill Flash / Slow Sync. / Rear Sync.
Flash Type	Built-in, manual pop-up

Recording	
Compatible Recording Media	Memory Stick Micro, Memory Stick Micro (Mark2), microSD Memory Card, microSDHC Memory Card, microSDXC Memory Card*8
Recording Format	[Still Image] JPEG (DCF Ver. 2.0, Exif Ver. 2.31,MPF Baseline compliant) [Movie] XAVC S, AVCHD format Ver. 2.0 compatible, [Movie Audio] XAVC S: LPCM 2ch, AVCHD: Dolby Digital (AC-3) 2ch (Dolby Digital Stereo Creator)
Movie Recording Mode (NTSC)	[XAVC S 4K (3,840 x 2,160)] 30p (100M / 60M), 24p (100M / 60M), [XAVC S HD (1,920 x 1,080)] 120p (100M / 60M), 60p (50M / 25M), 30p (50M / 16M), 24p (50M), [AVCHD (1,920 x 1,080)] 60i (24M FX / 17M FH)
Movie Recording Mode (PAL)	[XAVC S 4K (3,840 x 2,160)] 25p (100M / 60M), [XAVC S HD (1,920 x 1,080)] 100p (100M / 60M), 50p (50M / 25M), 25p (50M / 16M), [AVCHD (1,920 x 1,080)] 50i (24M FX / 17M FH)
Proxy Recording	1,280 x 720 (Approx.9Mbps)
Interface	
Input and Output Terminals	Multi / Micro USB Terminal*9, Hi-Speed USB (USB2.0), Micro HDMI
NFC	NFC forum Type 3 Tag compatible, One-touch remote, One-touch sharing
Wi-Fi	IEEE802.11b/g/n (2.4GHz band)
Bluetooth	Ver.4.1
GPS	—
Power	
Power Source	DC3.6V (supplied battery) / DC5.0V (supplied AC adaptor)
USB Charge / USB Power Supply	Yes (with supplied AC adaptor and supplied battery)
Battery Life (CIPA)	[Still image]*10 Approx. 370, [Movie (actual shooting)*11*12] Approx. 55min.*13, [Movie (continuous shooting)*11] Approx. 95min.*13
Other	
Shooting Functions	Eye AF, Lock on AF, Face Detection, Face Registration, Smile Shutter, Grid Line, Digital Level Gauge, WB Bracketing, DRO Bracketing, Zebra, Marker Display, Micref Level, Zoom Assist, My Menu Setting, Self-portrait timer, Picture Effect, Creative Style
Size & Weight	
Dimensions (W x H x D)	Approx. 101.6mm x 58.1mm x 35.5mm (4 1/8 in. x 2 3/8 in. x 1 7/16 in.)
Weight (CIPA)	Approx. 233g (8.3oz) (Battery and Memory Card are included) / Approx. 207g (7.3oz) (Body Only)
Supplied Accessories	
Rechargeable Battery Pack NP-BX1, AC Adaptor, Micro USB cable, Wrist Strap, Instruction Manual	

*1 At maximum pixel readout.
*2 Value displayed on the camera and recorded in the Exif.
*3 Optical zoom from the wide side.
*4 REI = Recommended Exposure Index
*5 You may not be able to shoot images in Burst mode depending on the Shooting mode.
*6 Continuous shooting speed will be reduced when used together with built-in or external flash.
*7 With "Continuous shooting mode: Speed Priority Continuous Shooting" and "Image quality: Fine".
Speed will decrease after some shots have been taken.
*8 For movies, Memory Stick Micro (Mark2), or microSD / microSDHC / microSDXC card of Class 4 or faster is necessary.
*9 Supports Micro USB compatible device.
*10 The LCD screen is turned on, shooting once every 30 seconds, the zoom is switched alternately between the W and T ends, the flash strobes once every two times, the power turns on and off once every ten times.
*11 Continuous shooting is possible for approximately 29 minutes (limited by product specifications, default setting).
*12 Indicated recording time is defined by repeating the following cycle: Power on, start recording, zoom, stand-by, and power off.
*13 Based on non-stop recording until the limit (29 minutes or 4GB) has been reached, and then continued recording again.
Shooting functions such as zoom will not be available.




Environmental Information

Halogenated flame retardants are not used in cabinets and certain printed wiring boards. Recycled paper is used for the carton. Corrugated cardboard and paper are used for the packaging cushions.


SONY, Cyber-shot, “Exmor R”, “BIONZ X”, “SteadyShot”, “Memory Stick”, “Memory Stick PRO Duo”, “Memory Stick PRO-HG Duo”, “PlayMemories Home”, “PlayMemories Mobile”, and “XAVC S” are trademarks or registered trademarks of Sony Corporation.
All other company and product names mentioned herein are used for identification purposes only and may be the trademarks or registered trademarks of their respective owners.

* Screen displays are simulated. * Simulated effects are used to illustrate some functions. * Features and specifications are subject to change without prior notice.

•Sony Corporation Sony Marketing (Japan) Inc. 1-7-1 Konan Minato-ku, Tokyo, 108-0075 Japan

 Safety Cautions	To ensure correct use of this product, read the “Instruction Manual” prior to use. Failure to follow all safeguards can result in fire, electric shock, or other accidents. Do not use headphones while driving and cycling, etc.
---	---

Sony | Photo Gallery:
http://www.sony.net/Products/dl_photo-gallery/



Sony | Camera Channel:
<https://www.youtube.com/c/ImagingbySony>

