

SONY

Cyber-shot

New Products Information

Digital Still Camera

Inspiring infinite imagination

激发无尽想象

RX0

Debut

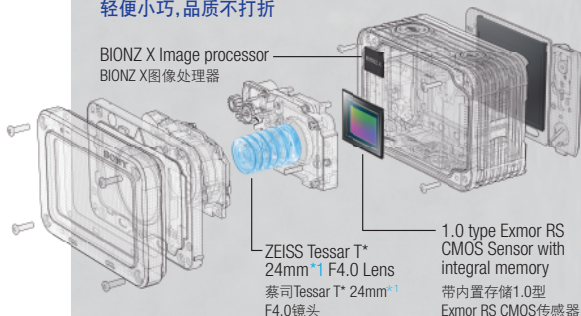
全新登场



Quality and Compactness uncompromised

轻便小巧, 品质不打折

BIONZ X Image processor
BIONZ X图像处理器



ZEISS T* 24mm^{*1} F4.0 Lens
蔡司 T* 24mm^{*1} F4.0 镜头

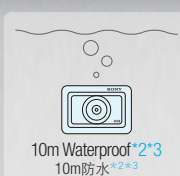
1.0 type Exmor RS CMOS Sensor with integral memory
带内置存储1.0型 Exmor RS CMOS传感器

Robust, mobile design for extended shooting

坚固、便携的设计, 适合长时间拍摄



2.0m Shockproof^{*2*4}
2.0m防震^{*2*4}



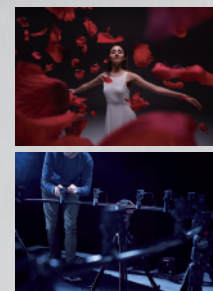
10m Waterproof^{*2*3}
10m防水^{*2*3}



200kgf Crushproof^{*2*5}
200公斤力防撞能力^{*2*5}

Unique expressive features

独特的富表现力的功能



- Super slow motion^{*6}
超级慢动作^{*6}
- Anti-distortion Shutter up to 1/32000 sec
防失真快门, 高达1/32000秒的快门速度
- 4K^{*7} Clean HDMI output
4K^{*7}清晰HDMI输出
- Multi-angle shooting & Wireless multi control function^{*8}
多视角拍摄及无线多机控制功能^{*8}

Ultra Compact Camera with Waterproof and Shockproof design

采用防水防震设计的超小型相机



DSC-RX0

Open Price **NEW**

15.3 Megapixels 1530万有效像素	1.0 type Exmor RS CMOS Sensor 1.0型Exmor RS CMOS影像传感器	10m Waterproof ^{*2*3} 10m防水	2.0m Shockproof ^{*2*4} 2.0m防震	200kgf Crushproof ^{*2*5} 200公斤力防撞能力
Dustproof IP6X equivalent 防尘能力 相当于IP6X	XAVC S ^{*10} / AVCHD Full HD Movie XAVCS / AVCHD格式全高清动态影像	4K ^{*7} Clean HDMI Output 4K 清晰HDMI输出	230K dot Clear Photo LCD 1.5 type	
Wi-Fi	Wireless multi-control function ^{*8} 无线多机控制功能	Continuous shooting 16fps ^{*11} 16张/秒高速连拍	ZEISS	

Multilingual Menu Display

多语言菜单显示

English / Chinese (Simplified Chinese) 中文 (简体中文)

Instruction Manual

使用说明书

English / Chinese (Simplified Chinese / Traditional Chinese) 中文 (简体中文 / 繁体中文)

^{*1} 35 mm equivalent. 35mm等效焦距。 ^{*2} Depending on usage conditions and circumstances, no guarantee is made regarding damage to, malfunction of, or waterproof performance of this camera. 根据具体的使用情况和环境, 对本机的损坏、故障或防水性能不予保证。 ^{*3} Under water, the shortest focal distance is increased, causing angle of field to be narrower. 在水下, 最短焦距会变长, 从而造成视角变窄。 ^{*4} Passed MIL-STD810G C1 Method 516.7-Shock test onto 5cm plywood. 在5cm胶合板上通过MIL-STD810G C1 Method 516.7震动测试。 ^{*5} SONY test conditions. SONY测试条件。 ^{*6} Sound cannot be recorded when shooting slow motion. A Class 10 or higher SDXC or SDHC memory card is required. 拍摄慢动作时不能录音。需要Class 10或更高规格的SDXC或SDHC存储卡。 ^{*7} QFHD resolution: 3,840 x 2,160 pixels. QFHD分辨率: 3,840 x 2,160像素。 ^{*8} A smartphone which is installed Ver6.1 or later Play Memories Mobile app is required. Up to 5 cameras. 需要一部安装了不低于6.1版本的Play Memories手机应用程序的智能手机。最多5部相机。 ^{*9} Movies and still images recorded with this camera can be output by TV that supports PAL or NTSC System. 支持PAL或NTSC制式的电视可输出本相机拍摄的动态影像和静态图像。 ^{*10} Use SDXC card or SDHC card of Class 10 or faster to take movies in XAVC S format. 使用Class 10或更快的SDXC存储卡或SDHC存储卡来拍摄XAVC S格式的动态影像。 ^{*11} In Speed Priority Continuous mode. Focus and exposure settings fixed at first shot. 在速度优先连拍模式下, 对焦和曝光在拍摄第一张照片时被设定。

BE MOVED



Visit Sony Overseas Models Website 访问索尼海外规格产品网站

sony.jp/overseas/


Please access to Sony Overseas Models website for product information, shop locations, and support & service for products purchased.

如需了解更多产品信息、商铺位置以及所购产品的技术支持与服务, 请浏览索尼海外规格产品网站。

Specifications 规格表

Model Name 机型名称		DSC-RX0				
Lens 镜头	ZEISS Tessar T*		File Format 文件格式	Still Image 静态图像	JPEG (DCF Ver.2.0, Exif Ver.2.31, MPF Baseline compliant), RAW (Sony ARW 2.3 format)	
	Lens Construction 镜头结构		Video Compression 视频压缩		XAVC S ^{*5} / AVCHD format Ver.2.0 compatible / MP4	
	Optical Zoom Magnification 光学变焦倍率		Movie Recording Mode (Approx.) 动态影像录制模式 (约)			
	Clear Image Zoom 清晰影像变焦					
	Digital Zoom Magnification (Approx.) 数码变焦倍率 (约)					
	F-number (Maximum Aperture) F值(最大光圈)					
	Focal Length (f=) 焦距 (f=)					
	35mm equivalent (Still 4:3) 35mm等效 (4:3静态图像)					
	Image Sensor 影像传感器 Camera 相机	Type / Size 类型 / 尺寸	Exmor RS CMOS Sensor, 1.0type (13.2mm x 8.8mm)			
		Number of effective pixels (Approx.) 有效像素数 (约)		15.3 Megapixels		
Imaging Processor 影像处理器		BIONZ X				
Exposure Compensation 曝光补偿		Plus / Minus 3.0EV, 1/3EV step				
Shutter Speed 快门速度		1/4" - 1/32000				
Light Metering Mode 测光模式		Multi Pattern / Center Weighted / Spot				
ISO Sensitivity (REI) ISO感光度 (REI)		Setting 设置	Still Image: Auto (ISO125-12800, selectable with upper / lower limit, 125 / 160 / 200 / 250 / 320 / 400 / 500 / 640 / 800 / 1000 / 1250 / 1600 / 2000 / 2500 / 3200 / 4000 / 5000 / 6400 / 8000 / 10000 / 12800 (Extendable to ISO80 / 100), Multi-Frame NR: Auto (ISO125-12800), 200 / 400 / 800 / 1600 / 3200 / 6400 / 12800 / 25600 ^{*1}			
SteadyShot 防抖功能		System Name 系统名称	—			
Optical SteadyShot Active Mode (for Movie) 光学防抖增强模式 (动态影像适用)		—				
Focus Mode 对焦模式		Single-shot AF / Preset Focus / Manual Focus				
White Balance Mode 白平衡模式		Auto / Daylight / Shade / Cloudy / Incandescent / Fluor (Warm White) / Fluor (Cool White) / Fluor (Day White) / Fluor (Daylight) / Underwater Auto / C.Temp./Filter / Custom				
Flash Range (Approx.) 闪光范围 (约)		—				
Continuous Shooting Speed (maximum) (Maximum number of recorded pixels) ^{*2} 连拍速度 (最大) (最大录制像素数) ^{*2}		Speed Priority Continuous Shooting: approx. 16 fps, Continuous Shooting: approx. 5.5 fps ^{*3}				
Shooting Mode (Still Image) 拍摄模式 (静态图像)		Program Auto / Manual Exposure / MR (Memory Recall) (body 3 sets / memory card 4 sets) / Movie Mode (Intelligent Auto) / Movie Mode (Program Auto) / Movie Mode (Manual Exposure) / HFR Mode (Program Auto, Manual Exposure) / Intelligent Auto / Superior Auto				
Scene Selection 场景选择		—				
Panorama 全景		—				
Picture Effect 照片效果		Pop Color / Posterization / Retro Photo / Soft High-key / Partial Color / High Contrast Monochrome / Soft Focus / HDR Painting / Richtone Monochrome / Miniature / Watercolor / Illustration				
Picture Effect for Movie 动态影像的照片效果		Pop Color / Posterization / Retro Photo / Soft High-key / Partial Color / High Contrast Monochrome				
Number of Recognized Scene 识别的场景数		Superior Auto: 10 / iAuto: 10				
Monitor 显示屏	Type 类型		1.5 type / 230,400 dots			
	Screen Type / Number of dots 屏幕类型/点数		TFT LCD (Clear Photo)			
Viewfinder 取景器	Screen Type / Number of dots 屏幕类型/点数		—			
Digital Level Gauge 电子水平导航	Screen Type / Number of dots 屏幕类型/点数		—			
Recording 录制	Compatible Recording Media ^{*4} 兼容录制媒体 ^{*4}		Memory Stick Micro / Memory Stick Micro (Mark2) / microSD Memory Card / microSDHC Memory Card / microSDXC Memory Card			
	Internal Memory (Approx.) Recording Capacity 内存 (约) 录制容量		—			
Battery life and number of images you can record / view (Approx.) 电池寿命及可拍摄 / 观赏的影像数量 (约)		When shooting still images (No. of images / Battery life) 拍摄静态图像时 (图像数量 / 电池寿命)		240 shots / 120 min. ^{*6}		
When shooting movies (min.) 拍摄动态影像时 (分钟)		Actual Shooting ^{*7} : 35 min. / Continuous shooting ^{*7} : 60 min. ^{*9}				
Interface 接口		Multi / Micro USB Terminal ^{*10} , Hi-Speed USB (USB2.0), Micro HDMI, Microphone jack (3.5 mm Stereo mini jack)				
Video Out Mode ^{*11} 视频输出模式 ^{*11}		NTSC / PAL				
Power, Others 电源、其他		Power Source 电源 Battery 电池		NP-BJ1, 3.7V		
USB Charge usb充电		● (Shooting, Playback)				
Dimensions (W x H x D, excluding protrusions) (Approx.) 尺寸 (宽 x 高 x 深, 不包括突出部分) (约)		59.0 x 40.5 x 29.8mm				
Mass (Body (Without Battery & Memory Card)) (Approx.) 重量 (机身(不含电池及存储卡)) (约)		95g				
Supplied Accessories 随机配件		Rechargeable Battery Pack NP-BJ1, AC Adaptor, Micro USB cable, Wrist Strap, Memory card protector				
^{*1} Achieved by using overlay burst shooting. 使用重叠连拍功能实现。 ^{*2} You may not be able to shoot images in Burst mode depending on the Shooting mode. 根据拍摄模式, 您可能不能使用高速连拍。 ^{*3} Speed will be slowing after taking some shots. 拍摄若干照片后速度将会减慢。 ^{*4} For movies, compatible Memory Stick PRO Duo (Mark2), Memory Stick PRO-HG Duo, Memory Stick XC-HG Duo, Memory Stick Micro (Mark2), SD/SDHC/SDXC memory card or microSD/microSDHC/microSDXC card (Class 4 or faster speed is recommended) can be used. 录制短片时, 可以使用与这些格式兼容的存储卡: Memory Stick PRO Duo (Mark2), Memory Stick PRO-HG Duo, Memory Stick XC-HG Duo, Memory Stick Micro (Mark2), SD/SDHC/SDXC, 或microSD/microSDHC/microSDXC (建议采用Class 4或更高速度)。 ^{*5} Use SDXC card of SDHC card of Class 10 or faster to take movies in XAVC S format. 使用Class 10或更快的SDXC存储卡或SDHC存储卡来拍摄XAVC S格式的动态影像。 ^{*6} The LCD screen is turned on, shooting once every 30 seconds, the zoom is switched alternately between the W and T ends the flash strobes once every two times, the power turns on and off once every ten times. 开启LCD显示屏, 每隔30秒拍摄一张, 焦距在广角端和望远端切换, 每拍摄两张进行一次闪光, 每拍摄十张开关机一次。 ^{*7} Continuous shooting is possible for approximately 29 minutes (limited by product specifications, default setting, except DSC-RX0). 大约可连续拍摄29分钟 (根据产品规格和默认设置, DSC-RX0除外)。 ^{*8} Indication recording time, which is defined by repeating the cycle: Power on, start recording, zoom (except DSC-RX1, DSC-RX0 series models) stand-by, power off. 参考拍摄时间, 通过重复执行这一循环得到: 开机, 拍摄, 变焦 (除DSC-RX1, DSC-RX0系列以外), 待机, 关机。 ^{*9} Based on non-stop recording until the limit (29 minutes or 4GB) has been reached, and then continued recording again. Shooting functions such as zoom will not be available. 基于连续录制直至达到 (29分钟或4GB) 的上限, 然后重新开始录制, 诸如变焦等拍摄功能将不可用。 ^{*10} Supports Micro USB compatible device. 支持微型USB兼容设备。 ^{*11} Movies and still images recorded with this camera can be output by TV that supports PAL or NTSC System. 支持PAL或NTSC制式的电视可输出本相机拍摄的动态影像和静态图像。						

^{*1} Achieved by using overlay burst shooting. 使用重叠连拍功能实现。 ^{*2} You may not be able to shoot images in Burst mode depending on the Shooting mode. 根据拍摄模式，您可能不能使用高速连拍。 ^{*3} Speed will be slowing after taking some shots. 拍摄若干照片后速度将会减慢。 ^{*4} For movies, compatible Memory Stick PRO Duo (Mark2), Memory Stick PRO-HG Duo, Memory Stick XC-HG Duo, Memory Stick Micro (Mark2), SD/SDHC/SDXC memory card or microSD/microSDHC/microSDXC card (Class 4 or faster speed is recommended) can be used. 录制短片时，可以使用与这些格式兼容的存储卡：Memory Stick PRO Duo (Mark2), Memory Stick PRO-HG Duo, Memory Stick XC-HG Duo, Memory Stick Micro (Mark2), SD/SDHC/SDXC, 或microSD/microSDHC/microSDXC (建议采用Class 4或更高速度)。 ^{*5} Use SDXC card or SDHC card of Class 10 or faster to take movies in XAVC S format. 使用Class 10或更快的SDXC存储卡或SDHC存储卡来拍摄XAVC S格式的动态影像。 ^{*6} The LCD screen is turned on, shooting once every 30 seconds, the zoom is switched alternately between the W and T ends the flash strobes once every two times, the power turns on and off once every ten times. 开启LCD显示屏，每隔30秒拍摄一张，焦距在广角端和望远端切换，每拍摄两张进行一次闪光，每拍摄十张开关机一次。 ^{*7} Continuous shooting is possible for approximately 29 minutes (limited by product specifications,default setting, except DSC-RX0). 大约可连续拍摄29分钟 (根据产品规格和默认设置。DSC-RX0除外)。 ^{*8} Indication recording time, which is defined by repeating the cycle: Power on, start recording, zoom (except DSC-RX1, DSC-RX0 series models), stand-by, power off. 参考拍摄时间，通过重复执行这一循环得到：开机，拍摄，变焦 (除DSC-RX1, DSC-RX0系列以外)，待机，关机。 ^{*9} Based on non-stop recording until the limit (29 minutes or 4GB) has been reached, and then continued recording again. Shooting functions such as zoom will not be available. 基于连续录制直至达到 (29分钟或4GB) 的上限，然后重新开始录制。诸如变焦等拍摄功能将不可用。 ^{*10} Supports Micro USB compatible device. 支持微型USB兼容设备。 ^{*11} Movies and still images recorded with this camera can be output by TV that supports PAL or NTSC System. 支持PAL或NTSC制式的电视可输出本相机拍摄的动态影像和静态图像。

 Safety Cautions 安全注意事项	To ensure correct use of this product, read the “Instruction Manual” prior to use. Failure to follow all safeguards can result in fire, electric shock, or other accidents. Do not use headphones while driving and cycling, etc. 为确保正确使用本产品，使用前请仔细阅读“使用说明书”。如果未能遵守所有安全防护事项，可能会导致火灾、电击或其他事故的发生。在从事车辆驾驶或骑自行车等活动时，请勿使用耳机。
Backup recommended 备份建议	Please be aware of the possibility of unforeseen camera or recording medium errors. These may mean that you can no longer take photos and videos or, due to data destruction or disappearance, may make playback of recorded data impossible. We therefore recommend that you regularly back up valuable recorded content. 万一因相机或记录媒体等故障导致无法拍摄或记录内容损坏、消失而无法播放时，我们对影像或声音等记录内容提供保障，敬请谅解。重要的记录内容请定期备份。

•Sony Corporation
Sony Marketing (Japan) Inc.
1-7-1 Konan Minato-ku, Tokyo, 108-0075 Japan

•Sony Customer Information Center Japan

● For information about how to purchase or use our products, and for other assistance, please call our Customer Hotline.

Free Dial 0120-777-886

(Toll-free number available only in Japan.

Assistance available in Japanese language only.)

○ Mobile/PHS phone callers please dial 050-3754-9555

○ Service available

Mon. to Fri. _____ 9:00-18:00

Sat., Sun. and Holidays --- 9:00-17:00

•Sony Showroom

索尼展示厅

Address: 4-6 floor GINZA PLACE 8-1 Ginza 5-chome, Chuo-ku, Tokyo

Tel: 03-3573-5307

Hours: 11:00-19:00

URL: sony.jp/store/tourist/e/

地址：东京都中央区银座 5-8-1 GINZA PLACE 4-6 楼

营业时间：11:00-19:00

●SONY is a trademark of Sony Corporation.

●Cyber-shot, **Cyber-shot** are registered trademarks of Sony Corporation.

●XAVC S, **XAVC S**, Exmor, Exmor R, BIONZ, BIONZ X, **BIONZ X**, Memory Stick, Memory Stick Duo, Memory Stick PRO, Memory Stick PRO Duo, Memory Stick PRO-HG Duo, Memory Stick Micro, , **MEMORY STICK DUO**., **MEMORY STICK PRO**., **MEMORY STICK PRO DUO**., **MEMORY STICK PRO-HG DUO**., are trademarks of Sony Corporation.

●ZEISS Tessar and  are trademarks of Carl Zeiss AG.

●AVCHD and **AVCHD** are trademarks of Panasonic Corporation and Sony Corporation.

●HDMI, **HDMI** and High-Definition Multimedia Interface are trademarks or registered trademarks of HDMI Licensing LLC.

●The Wi-Fi Protected Setup Identifier Mark is a mark of the Wi-Fi Alliance.

●The Bluetooth word mark, figure mark, and combination mark are all trademarks that are owned by the Bluetooth SIG and licensed out for use to companies that are incorporating Bluetooth wireless technology into their products.

●SD and SDHC Logo are trademarks of SD-3C, LLC.

●All other product and company names are trademarks or registered trademarks of their respective companies.

●Design and specifications are subject to change without notice. 产品设计与参数可能会发生变更，恕不事先通知。

Contents of this catalog are valid as of September 2017